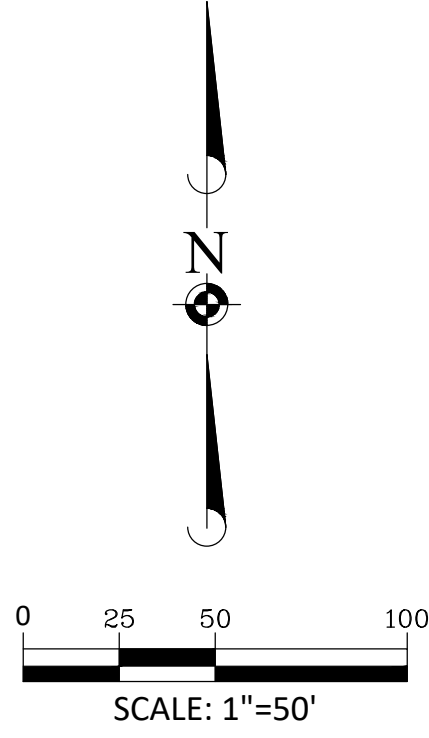


PRELIMINARY PLAT
OF
PRAIRIE LANDING SUBDIVISION PLANNED UNIT DEVELOPMENT
FOR CONTINUATION - SEE SHEET 3

THIS PLAT IS NOT FOR RECORD



EX. DETENTION BASIN
NWL = 592.0
HWL = 595.5
VOL = 11.65 AC-FT

OBTAIN ADDITIONAL
10' EASEMENT FOR
WM (BEYOND
EXISTING 5'
EASEMENT)

CONNECT 8" WM
TO EXISTING 8" WM

DELROSE
STREET

VALLEY FORGE
DRIVE

WARWICK FIVE
SUBDIVISION,
UNIT D

DRAWN BY DATE REVISIONS DATE 01/24/25 REVISED PER CITY REVIEW 12/17/24 REVISED PER CITY REVIEW	<p style="font-size: small; text-align: center;"> 2200 ESSINGTON ROAD, JOLIET, ILLINOIS 60435 PRELIMINARY PUD PLAT </p>	PROJ. MGR.: CJS PROJ. ASSOC.: DMR DRAWN BY: DMR DATE: 11/01/24 SCALE: 1" = 60' SHEET <h1 style="margin: 0;">4</h1> OF <h1 style="margin: 0;">7</h1> DRHJOIL04
---	--	--

January 27, 2025 - 15:08 Draw Name: \\mid-broad\Projects\01\DRHJOIL04-PR Preliminary PUD\DRHJOIL04-PR PUD Plat.dwg Updated By: DRHJOIL04

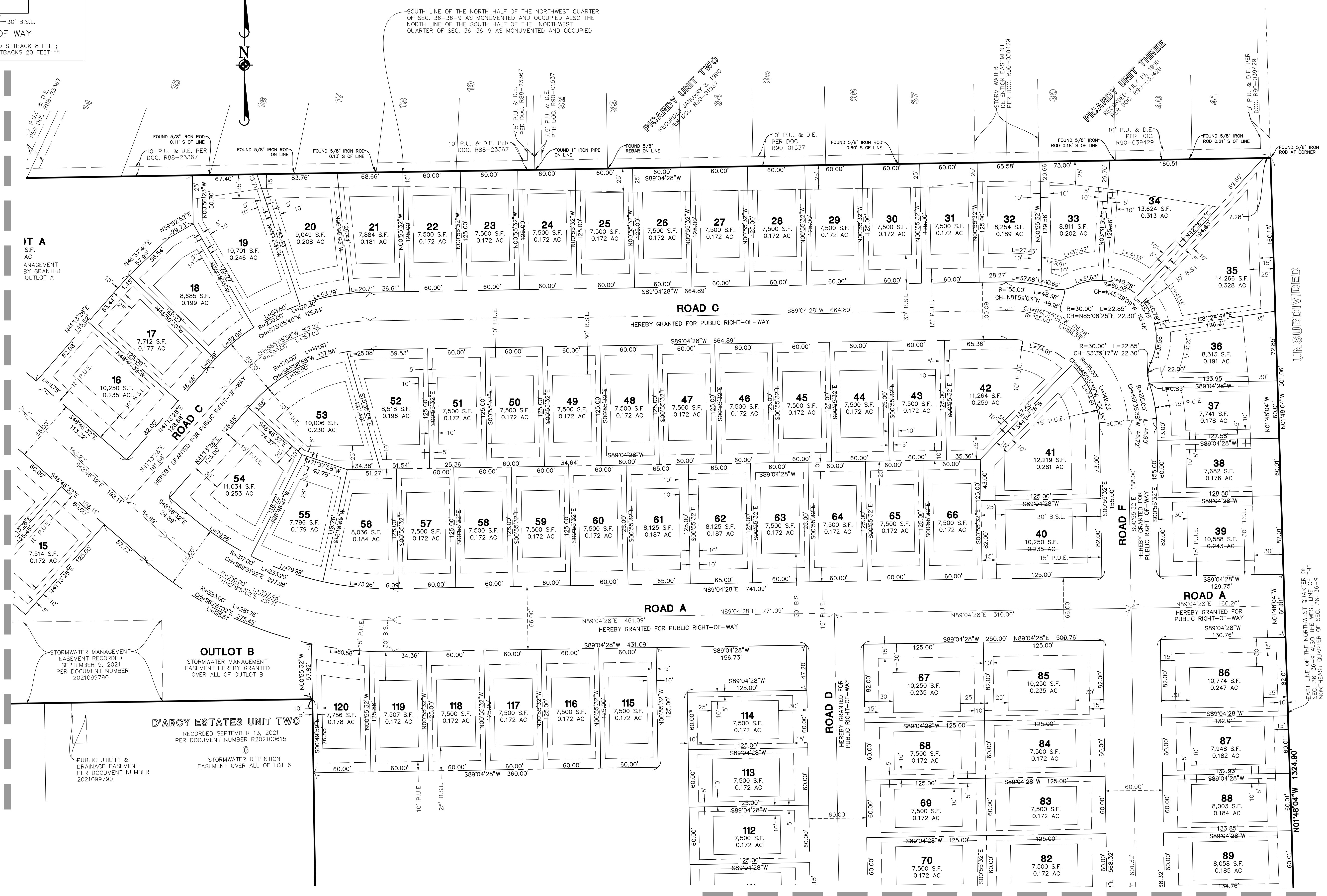
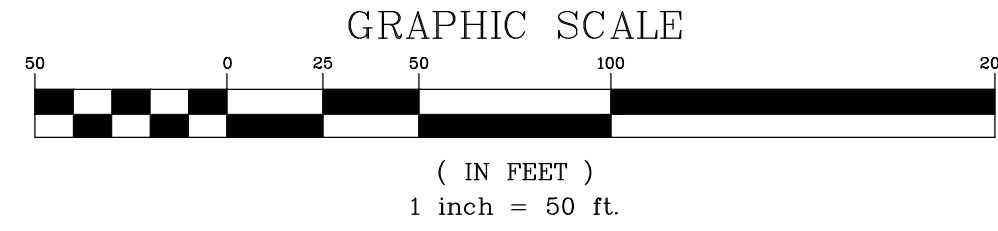
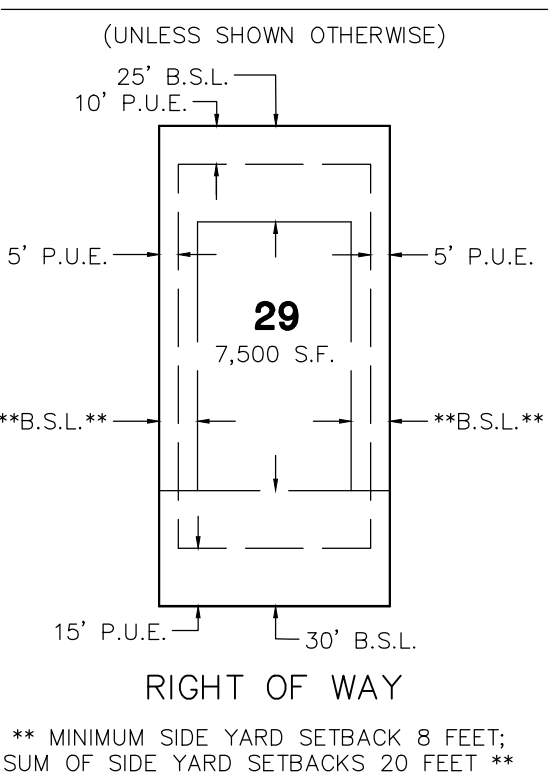
PRELIMINARY PLAT

OF

PRAIRIE LANDING SUBDIVISION PLANNED UNIT DEVELOPMENT

BEING A SUBDIVISION OF THAT PART OF THE WEST HALF OF THE NORTHWEST QUARTER OF SECTION 16, TOWNSHIP 36 NORTH, RANGE 9, EAST OF THE THIRD PRINCIPAL MERIDIAN, IN WILL COUNTY, ILLINOIS.

TYPICAL SETBACK AND EASEMENT DETAIL



FOR CONTINUATION - SEE SHEET 6

FOR CONTINUATION - SEE SHEET 7

Table with columns for DATE, REVISIONS, and DRAWN BY. The table is mostly empty, with a date of 01/24/25 and a revision of REVISED PER CITY REVIEW.



2200 ESSINGTON ROAD, JOLIET, ILLINOIS 60435
PRELIMINARY PUD PLAT
PROJ. MGR.: CJS
PROJ. ASSOC.: CJS
DRAWN BY: LB
DATE: 10/18/24
SCALE: 1" = 50'
SHEET 6 OF 7
DRHJ0104

