

ROCK RUN CROSSINGS LOT 1 RESUBDIVISION

LOT 1 IN THE RESUBDIVISION OF ROCK RUN CROSSINGS, BEING A SUBDIVISION OF PART OF THE WEST HALF OF SECTION 22, AND THE NORTHWEST QUARTER OF SECTION 27, BOTH IN TOWNSHIP 35 NORTH, RANGE 9 EAST OF THE THIRD PRINCIPAL MERIDIAN ACCORDING TO THE PLAT THEREOF RECORDED APRIL 19, 2022, AS DOCUMENT R2022031684 IN WILL COUNTY, ILLINOIS.

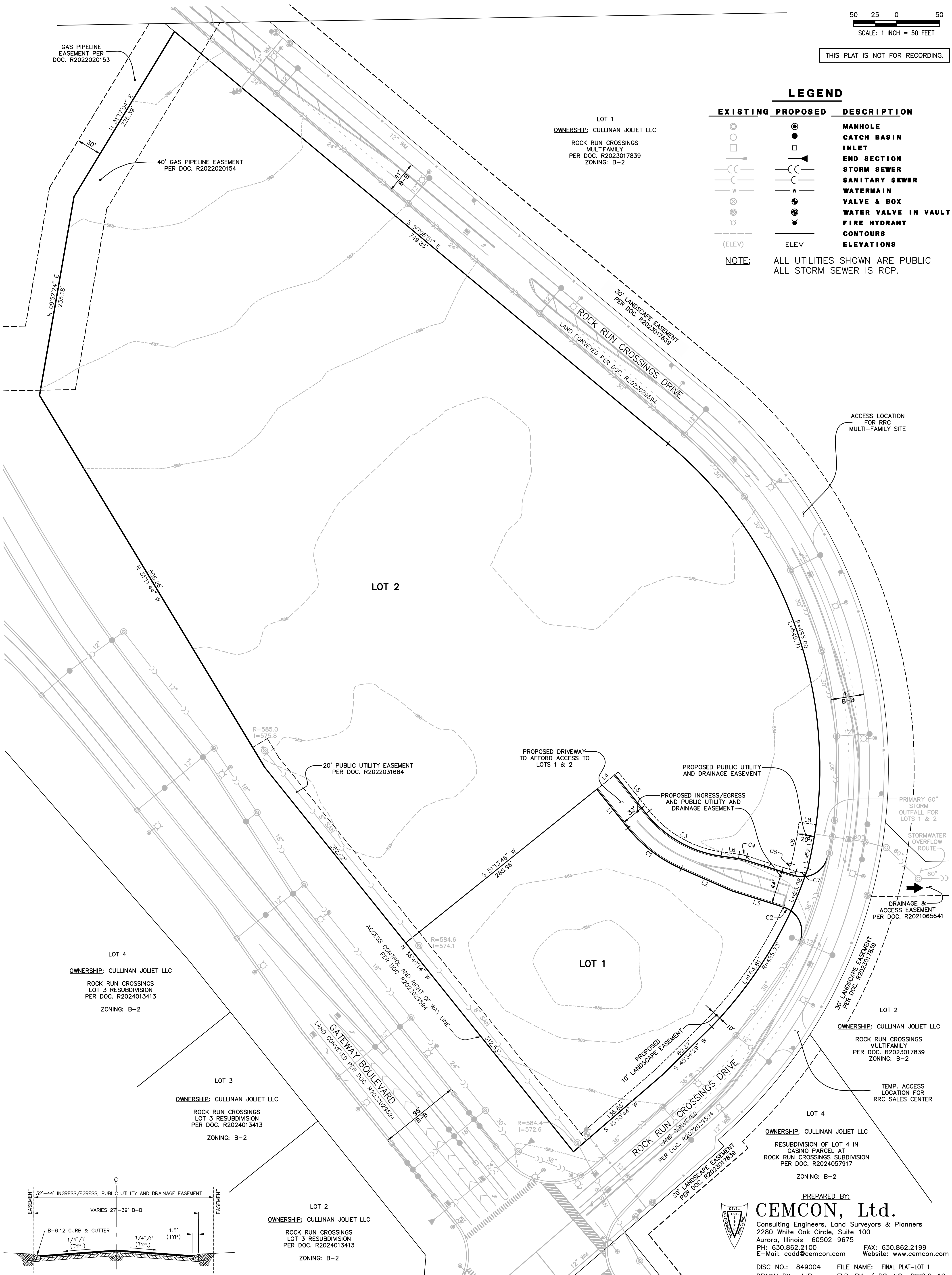
LINE	BEARING	LENGTH
L1	S 38°46'14" E	57.96'
L2	S 66°24'00" E	64.85'
L3	S 72°32'31" E	63.26'
L4	N 51°13'46" E	32.00'
L5	S 38°46'14" E	57.96'
L6	S 82°07'21" E	20.42'
L7	S 72°32'31" E	60.17'
L8	S 82°19'06" E	20.00'

CURVE	LENGTH	RADIUS	CHORD BEARING
C1	78.84'	163.50'	S 52°35'07" E
C2	9.42'	30.00'	S 63°32'54" E
C3	99.50'	131.50'	S 60°26'48" E
C4	9.20'	55.00'	S 77°19'56" E
C5	6.98'	465.73'	N 18°59'32" E
C6	49.20'	473.00'	N 10°39'34" E
C7	12.40'	25.00'	S 86°45'10" E



50 25 0 50
SCALE: 1 INCH = 50 FEET

THIS PLAT IS NOT FOR RECORDING.

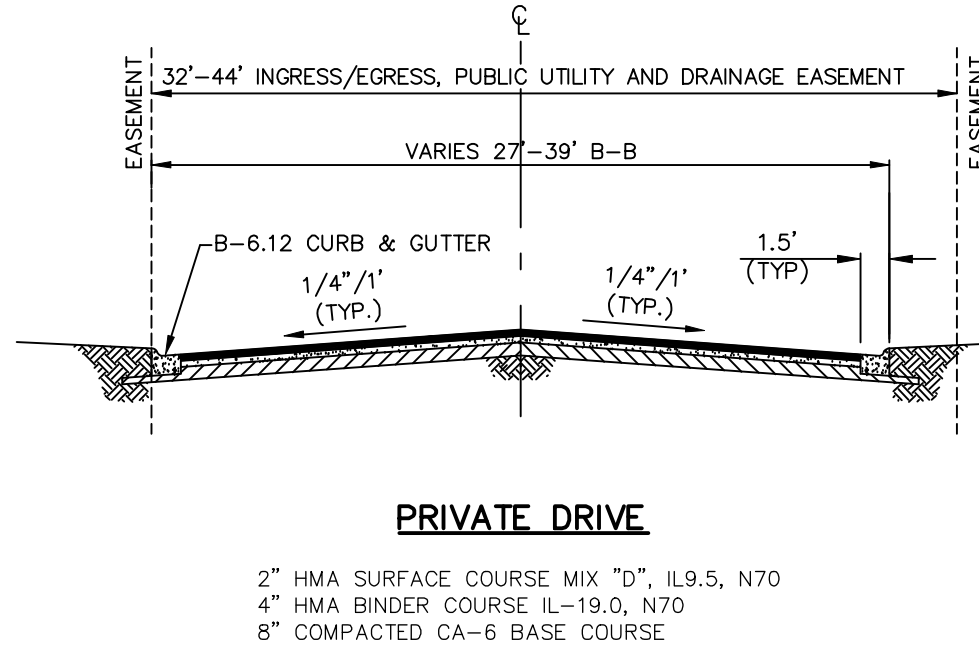


LEGEND

EXISTING	PROPOSED	DESCRIPTION
		MANHOLE
		CATCH BASIN
		INLET
		END SECTION
		STORM SEWER
		SANITARY SEWER
		WATERMAIN
		VALVE & BOX
		WATER VALVE IN VAULT
		FIRE HYDRANT
		CONTOURS
		ELEVATIONS

(ELEV) ELEV

NOTE: ALL UTILITIES SHOWN ARE PUBLIC
ALL STORM SEWER IS RCP.



PLOT FILE CREATED: 5/1/2025 BY: KRISTIN STAMBERG

PREPARED BY:
CEMCON, Ltd.
Consulting Engineers, Land Surveyors & Planners
2280 White Oak Circle, Suite 100
Aurora, Illinois 60502-9675
PH: 630.862.2100 FAX: 630.862.2199
E-Mail: cadd@cemcon.com Website: www.cemcon.com

DISC NO.: 849004 FILE NAME: FINAL PLAT-LOT 1
DRAWN BY: AJB FLD. BK. / PG. NO.: D99\2-12
COMPLETION DATE: 01-09-25 JOB NO.: 849.008
XREF : 849.001 & 849.004 PROJECT MANAGER : MMW
REVISED: 02-10-25/AJB PER CITY COMMENTS DATED 02-07-25,
03-04-25/KMS

Copyright © 2025 Cemcon, Ltd. All rights reserved.