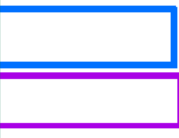
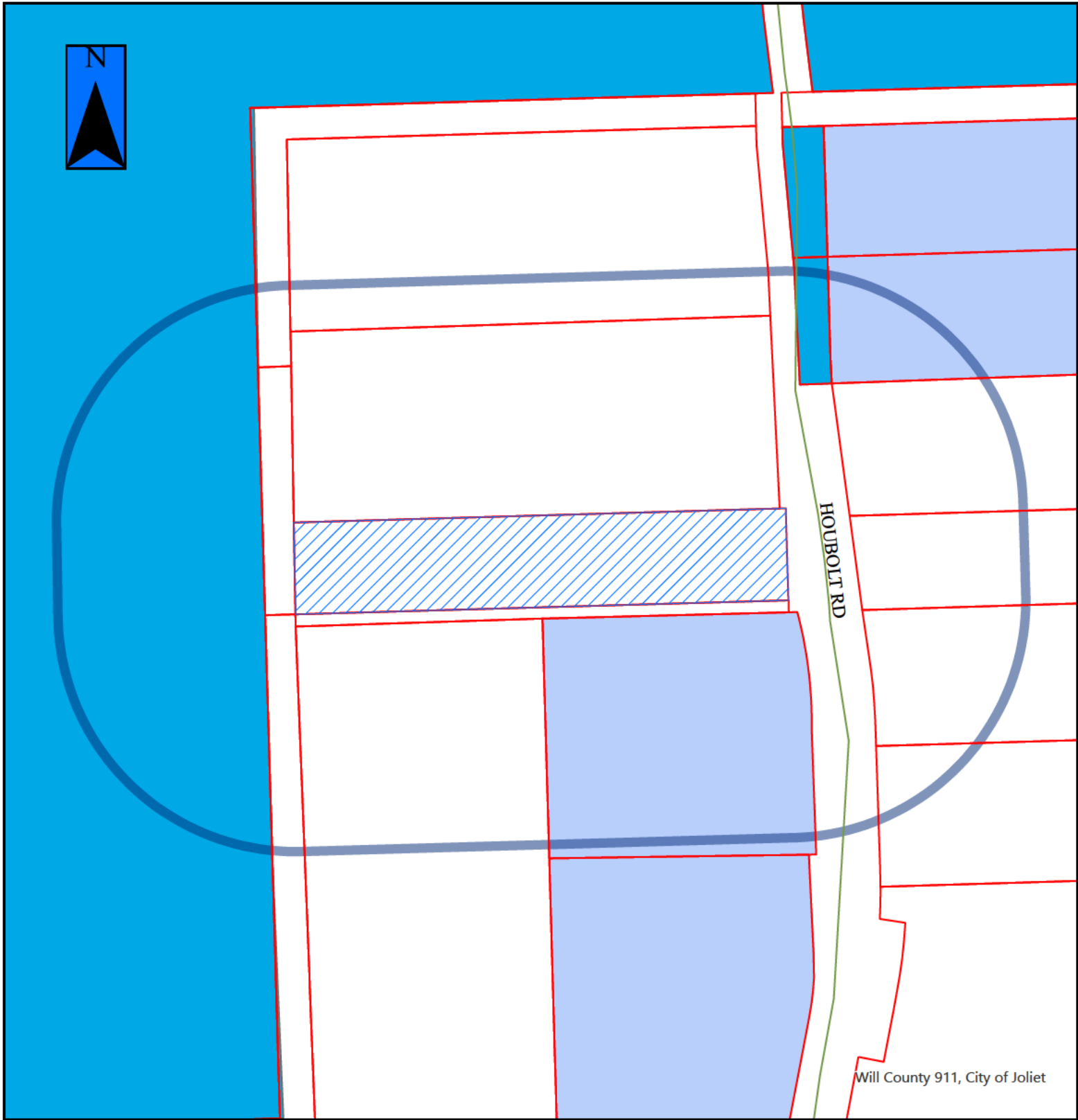


**2026-24a / 25a / 26a / 27a**





= Property in Question / Propiedad en cuestión  
= 600' Public Notification Boundary /  
Límite de notificación pública de 600 ft (180 m)



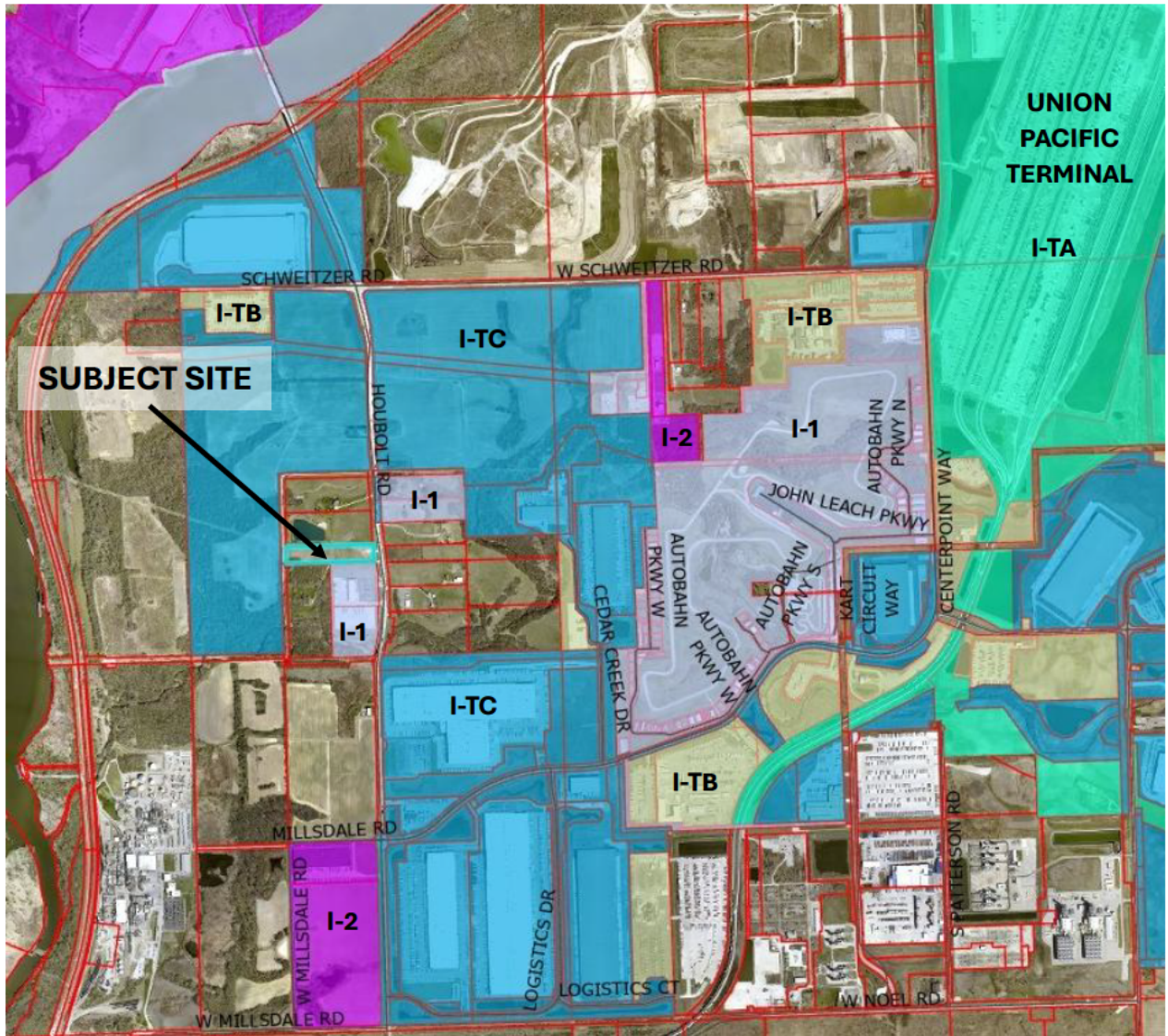
**2026-24 / 25 / 26 / 27**



 = Property in Question  
 = 600' Public Notification Boundary

Legend			
	B-1		R-2
	B-2		I-TA
	B-3		I-TB
	I-1		I-TC
	I-2		R-3
	I-T		R-1
			R-4
			R-1A
			R-5
			R-B

Figure 1: Aerial of subject site and surrounding area including the intermodal center (2025); City zoning layer shown



Zoning	
<span style="display:inline-block; width:15px; height:15px; background-color:#f8d7da;"></span>	B-1 (Neighborhood Business Districts)
<span style="display:inline-block; width:15px; height:15px; background-color:#f4cccc;"></span>	B-2 (Central Business Districts)
<span style="display:inline-block; width:15px; height:15px; background-color:#fff2cc;"></span>	B-3 (General Business Districts)
<span style="display:inline-block; width:15px; height:15px; background-color:#d9ead3;"></span>	I-1 (Light Industrial Districts)
<span style="display:inline-block; width:15px; height:15px; background-color:#f4cccc;"></span>	I-2 (General Industrial Districts)
<span style="display:inline-block; width:15px; height:15px; background-color:#d9ead3;"></span>	I-T (Intermodal Terminal)
<span style="display:inline-block; width:15px; height:15px; background-color:#c6e0b4;"></span>	(I-TA) Intermodal Terminal--Intermodal Terminal
<span style="display:inline-block; width:15px; height:15px; background-color:#fff2cc;"></span>	(I-TB) Intermodal Terminal--Transportation Equipment
<span style="display:inline-block; width:15px; height:15px; background-color:#d9ead3;"></span>	(I-TC) Intermodal Terminal--Industrial Park

Figure 2: Subject site at 23656 S. Houbolt Road, view looking west from Houbolt Road (May 2025)



Figure 3: Subject site and existing Whimsy Trucking terminal to the south at 3901 Houbolt Road (May 2025)



Figure 5: Existing Whimsy Trucking terminal at 3901 Houbolt Road (May 2025)



Figure 6: Example of a mobile CNG fueling station – note that this is not the specific unit requested, and the design and appearance could differ based on the provider

