

Final Landscape Plan

PRAIRIE LANDING

Joliet, Illinois

November 14, 2024

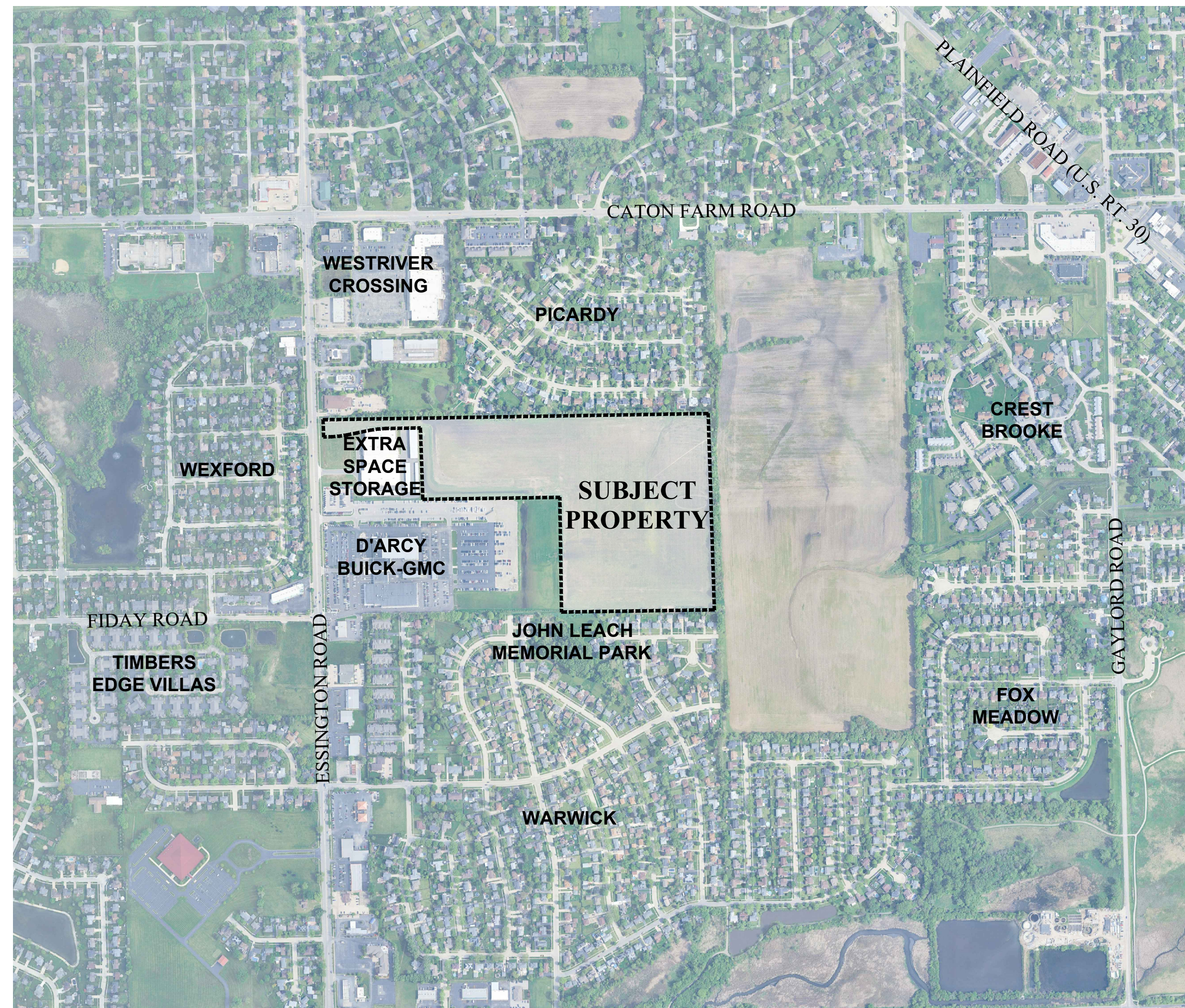
CONSULTANTS:



LANDSCAPE ARCHITECT:
GARY R. WEBER ASSOCIATES, INC
402 W. LIBERTY DRIVE
WHEATON, ILLINOIS 60187



CIVIL ENGINEER:
MANHARD CONSULTING
333 E. BUTTERFIELD RD. STE. 600
LOMBARD, IL 60148



LOCATION MAP

SCALE: 1"=600'

INDEX OF SHEETS

SHEET NO.	DESCRIPTION
0	COVER SHEET
1	OVERALL LANDSCAPE PLAN
2	LANDSCAPE PLAN
3	LANDSCAPE PLAN
4	LANDSCAPE DETAILS
5	AMENITY PLANS
6	MONUMENT DETAILS
7	TREE PRESERVATION PLAN
8	TREE PRESERVATION PLAN & INVENTORY
9	TREE INVENTORY
10	LANDSCAPE SPECIFICATIONS





GARY R. WEBER
ASSOCIATES, INC.
LAND PLANNING
ECOLOGICAL CONSULTING
LANDSCAPE ARCHITECTURE
402 W. LIBERTY DRIVE
WHEATON, ILLINOIS 60187
PHONE: 630-668-7197
www.grwainc.com

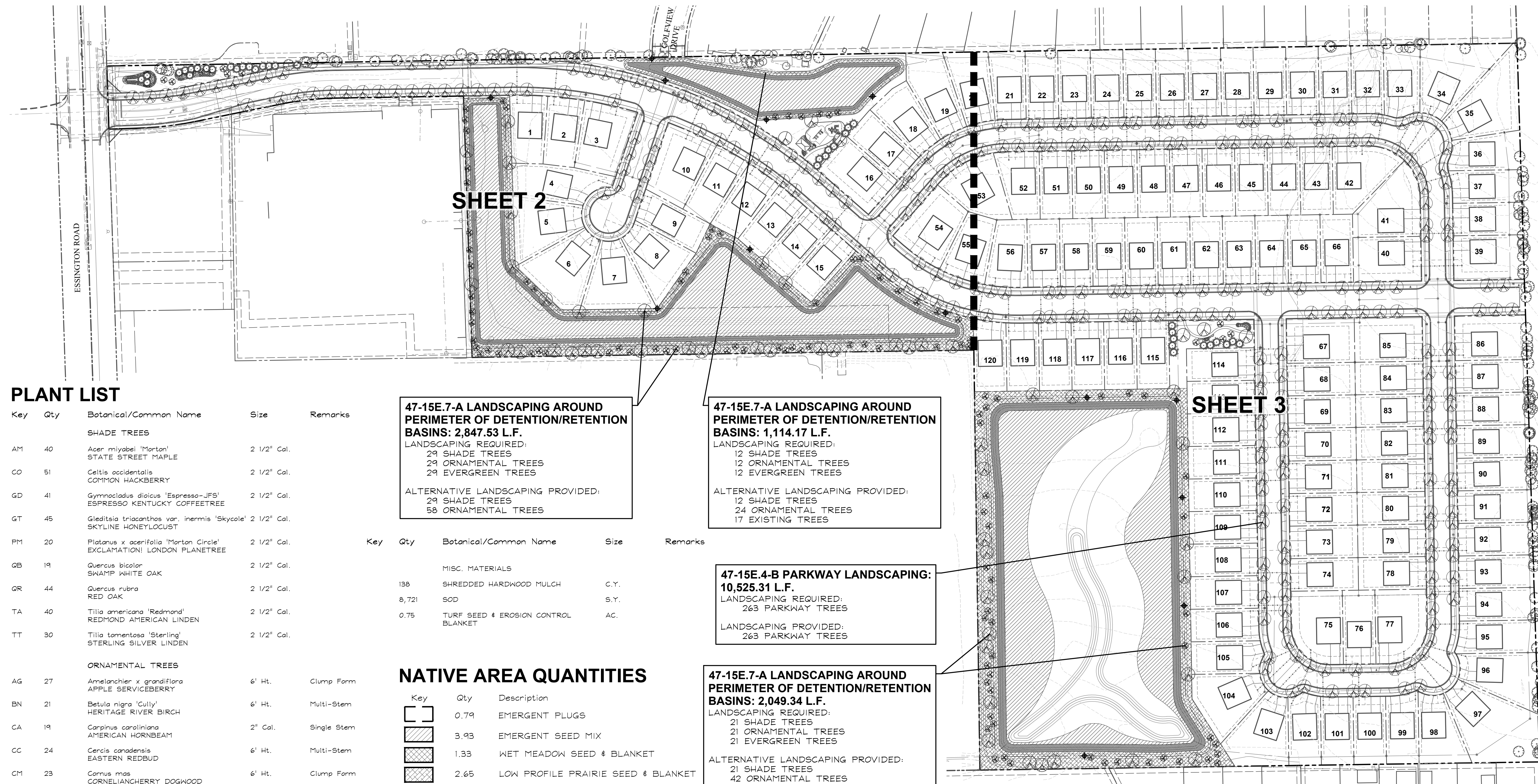
CLIENT
D.R. HORTON
America's Builder
1750 E. GOLF ROAD, SUITE 925
SCHAUMBURG, IL 60173
CIVIL ENGINEER
MANHARD CONSULTING
333 E. BUTTERFIELD RD. STE. 600
LOMBARD, IL 60148

PRAIRIE LANDING
JOLIET, ILLINOIS
OVERALL LANDSCAPE PLAN

1 11.14.2024
REVISIONS

DATE 11.01.2024
PROJECT NO. DR23154
DRAWN SMR
CHECKED DHS
SHEET NO.

1 OF 10



PLANT LIST

Key	Qty	Botanical/Common Name	Size	Remarks
SHADE TREES				
AM	40	Acer nyctabell 'Morton' STATE STREET MAPLE	2 1/2" Cal.	
CO	51	Celtis occidentalis COMMON HACKBERRY	2 1/2" Cal.	
GD	41	Gymnocladus dioica 'Espresso-JFS' ESPRESSO KENTUCKY COFFEETREE	2 1/2" Cal.	
GT	45	Gleditsia triacanthos var. inermis 'Skycole' 2 1/2" Cal. SKYLINE HONEYLOCUST	2 1/2" Cal.	
PM	20	Platanus x acerifolia 'Morton Circle' EXCLAMATION! LONDON PLANETREE	2 1/2" Cal.	
QB	19	Quercus bicolor SWAMP WHITE OAK	2 1/2" Cal.	
QR	44	Quercus rubra RED OAK	2 1/2" Cal.	
TA	40	Tilia americana 'Redmond' REDMOND AMERICAN LINDEN	2 1/2" Cal.	
TT	30	Tilia tomentosa 'Sterling' STERLING SILVER LINDEN	2 1/2" Cal.	
ORNAMENTAL TREES				
AG	27	Amelanchier x grandiflora APPLE SERVICEBERRY	6' Ht.	Clump Form
BN	21	Betula nigra 'Cully' HERITAGE RIVER BIRCH	6' Ht.	Multi-Stem
CA	19	Carpinus caroliniana AMERICAN HORNBEAM	2" Cal.	Single Stem
CC	24	Cercis canadensis EASTERN REDBUD	6' Ht.	Multi-Stem
CM	23	Cornus mas CORNELIANCHERRY DOGWOOD	6' Ht.	Clump Form
EVERGREEN TREES				
PA	16	Picea abies NORWAY SPRUCE	8' Ht.	
PP	14	Picea pungens COLORADO SPRUCE	8' Ht.	
PS	8	Pinus strobus EASTERN WHITE PINE	8' Ht.	
DECIDUOUS SHRUBS				
HP	15	Hydrangea paniculata 'SMHPLGF' LITTLE QUICK FIRE HYDRANGEA	24" Tall	3' O.C.
VT	15	Viburnum trilobum 'Redwing' JN SELECT CRANBERRYBUSH VIBURNUM	36" Tall	5' O.C.
WB	15	Weigela florida 'Bromwell' FINE WINE WEIGELA	24" Tall	3' O.C.
EVERGREEN SHRUBS				
JB	18	Juniperus conferta 'Blue Pacific' BLUE PACIFIC JUNIPER	24" Wide	4' O.C.
JK	13	Juniperus chinensis 'Kallaya Compact' KALLAYA'S COMPACT PFITZER JUNIPER	24" Wide	4' O.C.
ORNAMENTAL GRASSES				
CK	50	Calamagrostis x acutiflora 'Karl Foerster' FEATHER REED GRASS	#1	30" O.C.
SA	47	Sesleria autumnalis AUTUMN MOOR GRASS	#1	18" O.C.
PERENNIALS				
AB	49	Allium 'Summer Beauty' SUMMER BEAUTY ONION	#1	18" O.C.
EC	55	Echinacea 'CBG Cone 2' PIXIE MEADOWBRITE CONEFLOWER	#1	18" O.C.
HH	64	Hemerocallis 'Happy Returns' HAPPY RETURNS DAYLILY	#1	18" O.C.
SE	22	Sedum 'Autumn Joy' AUTUMN JOY SEDUM	#1	18" O.C.

47-15E.7-A LANDSCAPING AROUND PERIMETER OF DETENTION/RETENTION BASINS: 2,847.53 L.F.
LANDSCAPING REQUIRED:
29 SHADE TREES
29 ORNAMENTAL TREES
29 EVERGREEN TREES

ALTERNATIVE LANDSCAPING PROVIDED:
29 SHADE TREES
58 ORNAMENTAL TREES

47-15E.7-A LANDSCAPING AROUND PERIMETER OF DETENTION/RETENTION BASINS: 1,114.17 L.F.
LANDSCAPING REQUIRED:
12 SHADE TREES
12 ORNAMENTAL TREES
12 EVERGREEN TREES

ALTERNATIVE LANDSCAPING PROVIDED:
12 SHADE TREES
24 ORNAMENTAL TREES
17 EXISTING TREES

47-15E.4-B PARKWAY LANDSCAPING: 10,525.31 L.F.
LANDSCAPING REQUIRED:
263 PARKWAY TREES

LANDSCAPING PROVIDED:
263 PARKWAY TREES

47-15E.7-A LANDSCAPING AROUND PERIMETER OF DETENTION/RETENTION BASINS: 2,049.34 L.F.
LANDSCAPING REQUIRED:
21 SHADE TREES
21 ORNAMENTAL TREES
21 EVERGREEN TREES

ALTERNATIVE LANDSCAPING PROVIDED:
21 SHADE TREES
42 ORNAMENTAL TREES

NATIVE AREA QUANTITIES

Key	Qty	Description
[Symbol]	0.79	EMERGENT PLUGS
[Symbol]	3.93	EMERGENT SEED MIX
[Symbol]	1.33	WET MEADOW SEED & BLANKET
[Symbol]	2.65	LOW PROFILE PRAIRIE SEED & BLANKET
[Symbol]	14	NATURALIZED STORMWATER MANAGEMENT AREA SIGN

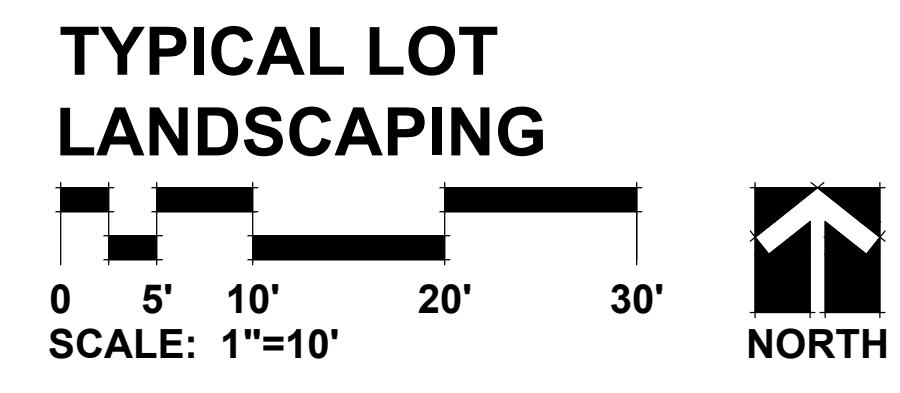
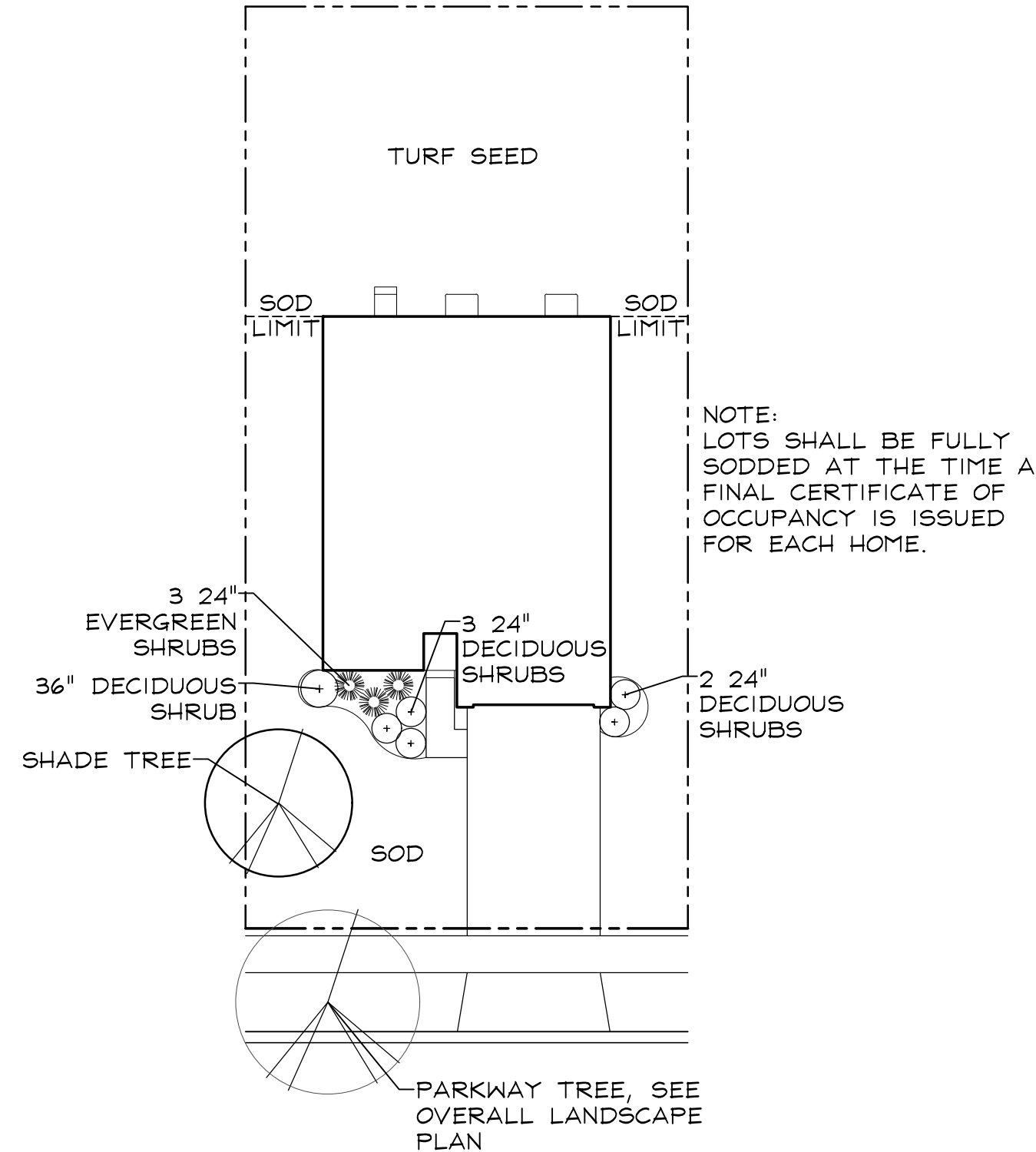
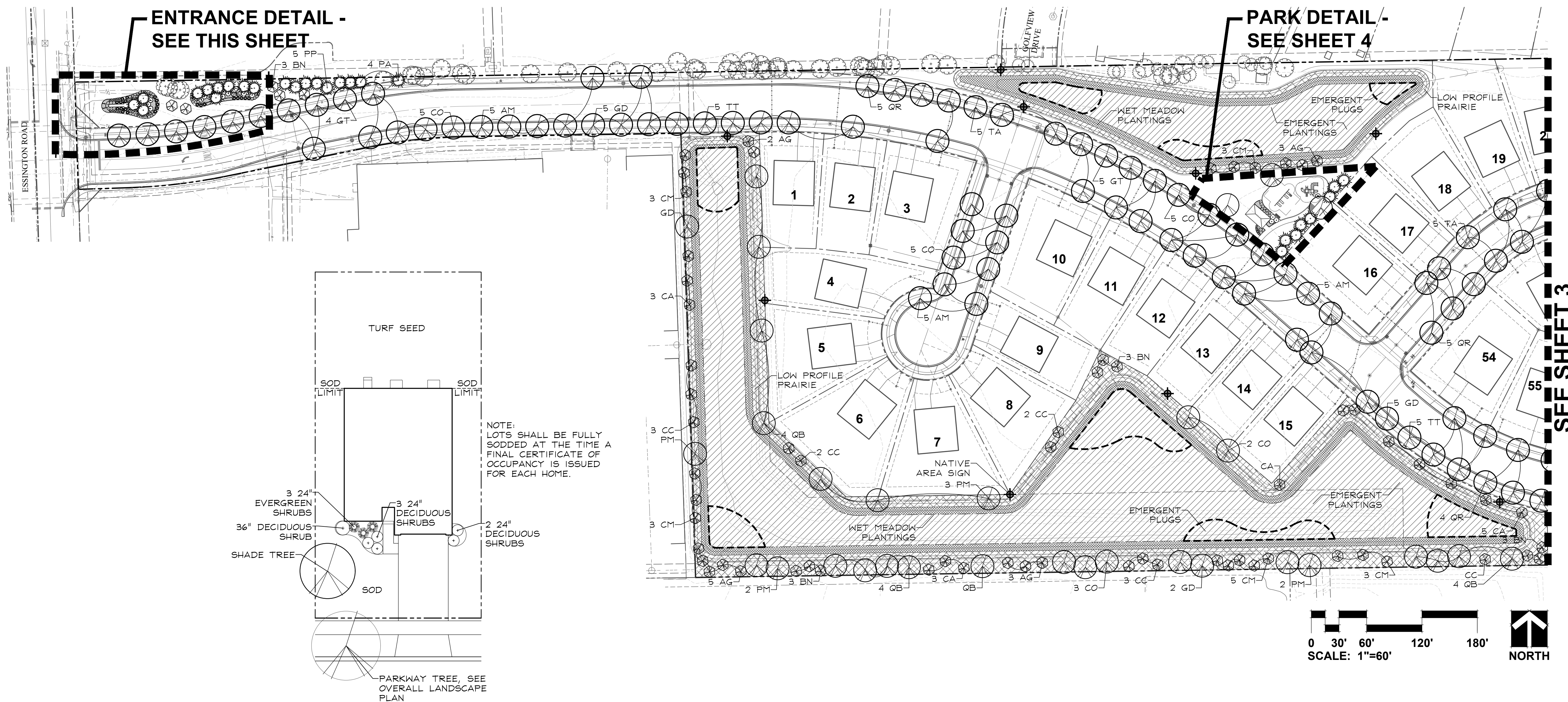
GENERAL LANDSCAPE NOTES

- Contractor shall verify underground utility lines and is responsible for any damage.
- Contractor shall verify all existing conditions in the field prior to construction and shall notify landscape architect of any variance.
- Material quantities shown are for contractors convenience only. The Contractor must verify all material and supply sufficient materials to complete the job per plan.
- The landscape architect reserves the right to inspect trees and shrubs either at place of growth or at site before planting, for compliance with requirements of variety, size and quality.
- Work shall conform to American Standard for Nursery Stock, State of Illinois Horticultural Standards, and Local Municipal requirements.
- Contractor shall secure and pay for all permits, fees, and inspections necessary for the proper execution of this work and comply with all codes applicable to this work.
- See General Conditions and Specifications for landscape work for additional requirements.
- No trees shall be planted within 5' of a hydrant, underground utility or 10' from an above ground utility structure or pole. Trees to be planted clear of all traffic control services and signs. Mulch must not touch tree trunks.
- All trees planted by an applicant shall be guaranteed for two (2) years from the date of acceptance and shall be replaced by the applicant at no charge to the Village, should they die or be in a declining condition in the opinion of the Village arborist. The replacement tree shall be of the same size, species and quality, and shall carry the same two (2) year guarantee.



PLOT COVERING SHEETS





GRWA
 GARY R. WEBER
 ASSOCIATES, INC.
 LAND PLANNING
 ECOLOGICAL CONSULTING
 LANDSCAPE ARCHITECTURE
 402 W. LIBERTY DRIVE
 WHEATON, ILLINOIS 60187
 PHONE: 630-668-7197
 www.grwainc.com

CLIENT
D.R. HORTON
America's Builder
 1750 E. GOLF ROAD, SUITE 925
 SCHAUMBURG, IL 60173
 CIVIL ENGINEER
MANHARD CONSULTING
 333 E. BUTTERFIELD RD. STE. 600
 LOMBARD, IL 60148

PRAIRIE LANDING
 JOLIET, ILLINOIS
LANDSCAPE PLAN

NO.	REVISIONS	DATE
1		11.14.2024

DATE 11.01.2024
 PROJECT NO. DR23154
 DRAWN SMR
 CHECKED DHS
 SHEET NO.





GARY R. WEBER
ASSOCIATES, INC.
LAND PLANNING
ECOLOGICAL CONSULTING
LANDSCAPE ARCHITECTURE
402 W. LIBERTY DRIVE
WHEATON, ILLINOIS 60187
PHONE: 630-668-7197
www.grwainc.com

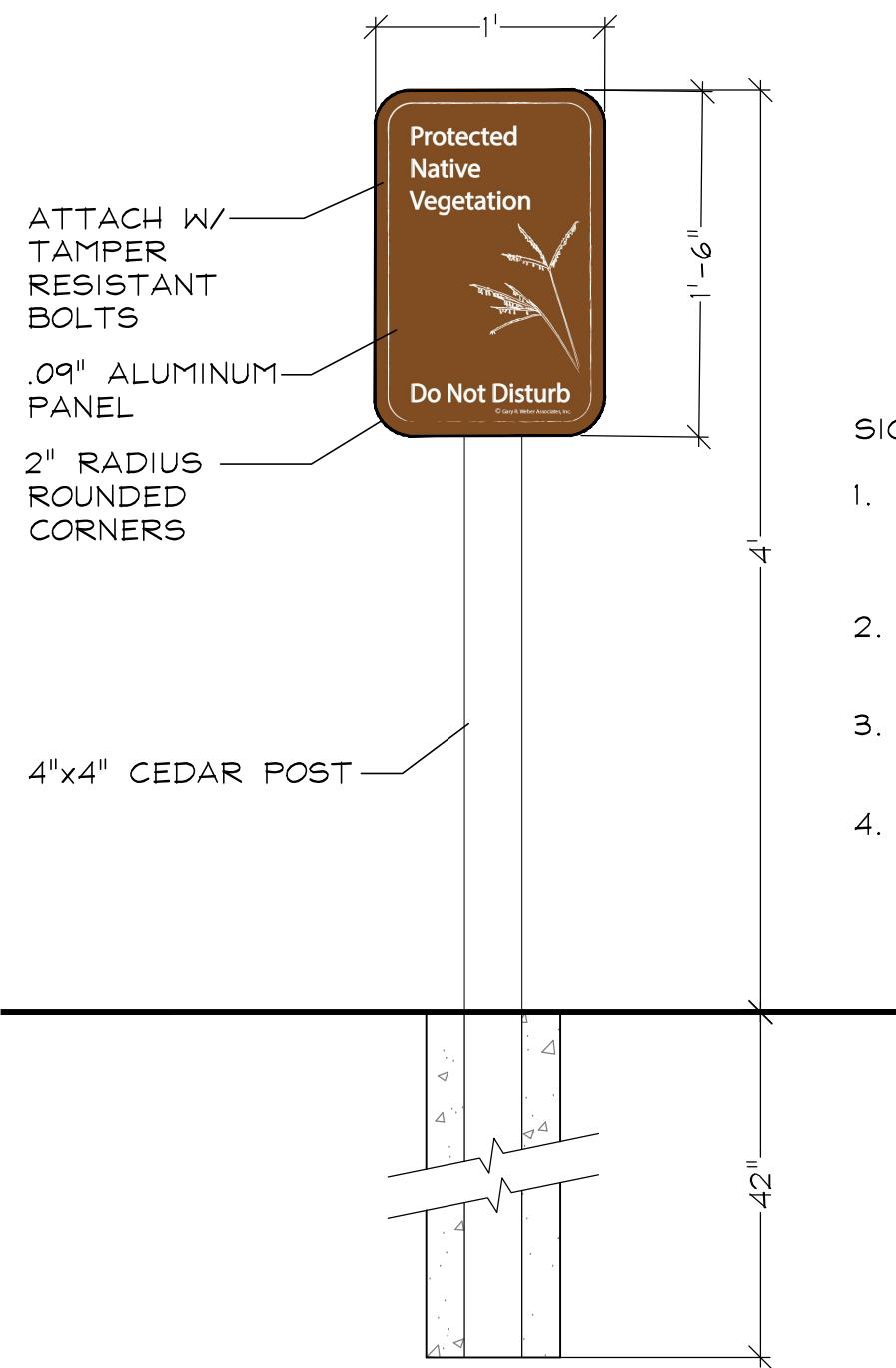
CLIENT
D.R. HORTON
America's Builder
1750 E. GOLF ROAD, SUITE 925
SCHAUMBURG, IL 60173
CIVIL ENGINEER
MANHARD CONSULTING
333 E. BUTTERFIELD RD. STE. 600
LOMBARD, IL 60148

PRAIRIE LANDING
JOLIET, ILLINOIS
LANDSCAPE PLAN

11.14.2024
REVISIONS

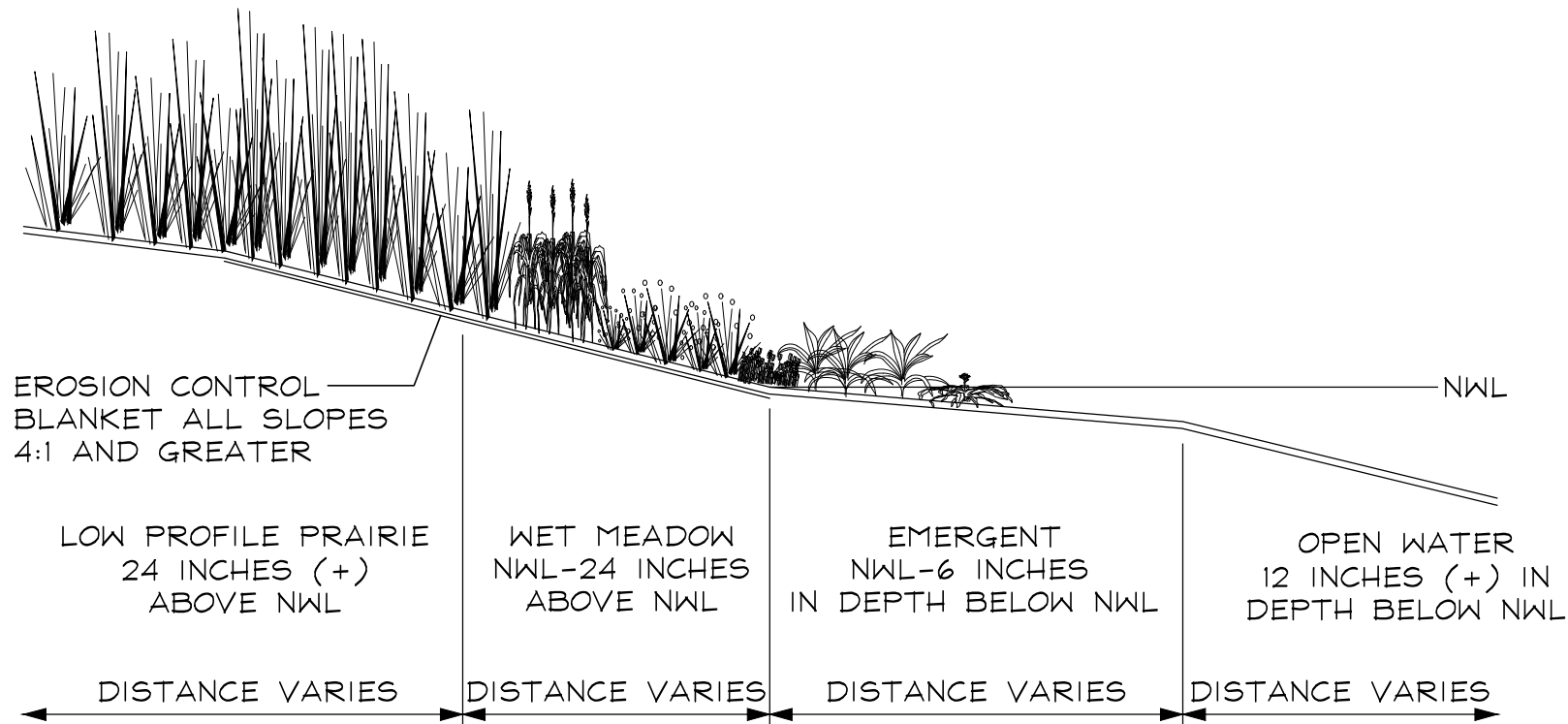
DATE 11.01.2024
PROJECT NO. DR23154
DRAWN SMR
CHECKED DHS
SHEET NO.

3 OF 10



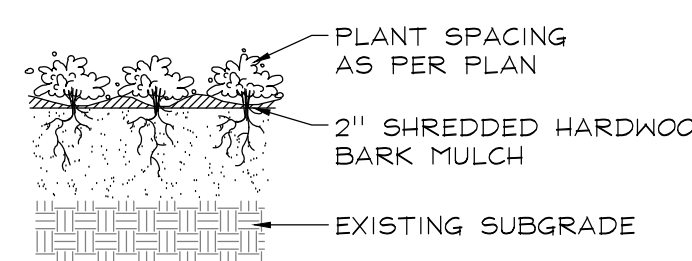
NATIVE AREA SIGN DETAIL
SCALE: NTS

- SIGN NOTES:
1. SIGN BACKGROUND COLOR: C=40, M=70, Y=100, K=28
SIGN FONT AND GRAPHIC COLOR: WHITE
 2. FONT STYLE: MYRIAD PRO
FONT SIZE: 11/6 PT.
 3. SIGN ARTWORK SHALL BE PROVIDED BY GARY R. WEBER ASSOCIATES, INC.
 4. CONTRACTOR TO SUBMIT SHOP DRAWING AND COLOR SAMPLE FOR THE PROTECTED NATIVE VEGETATION SIGN FOR REVIEW AND APPROVAL BY THE LANDSCAPE ARCHITECT PRIOR TO FABRICATION AND INSTALLATION.

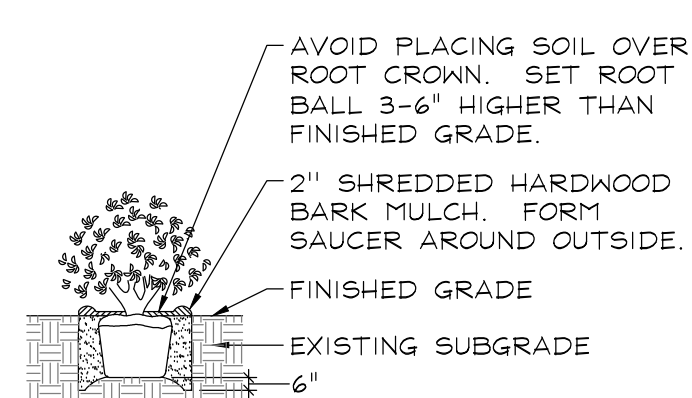


NATURALIZED STORMWATER BASIN SECTION
NOT TO SCALE

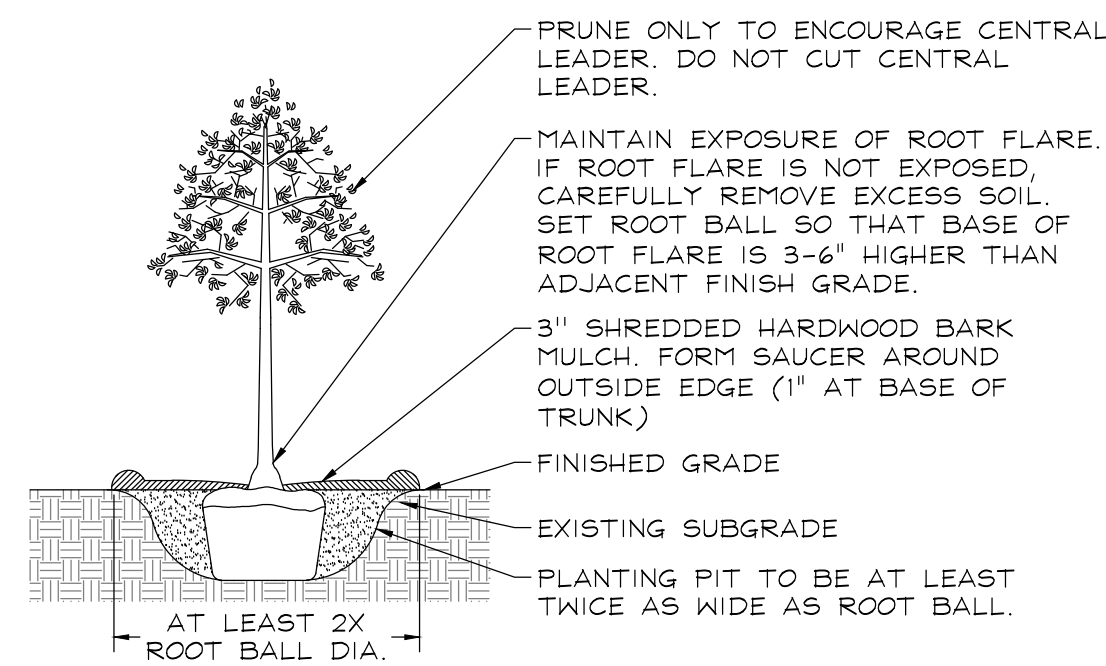
PLANTING DETAILS



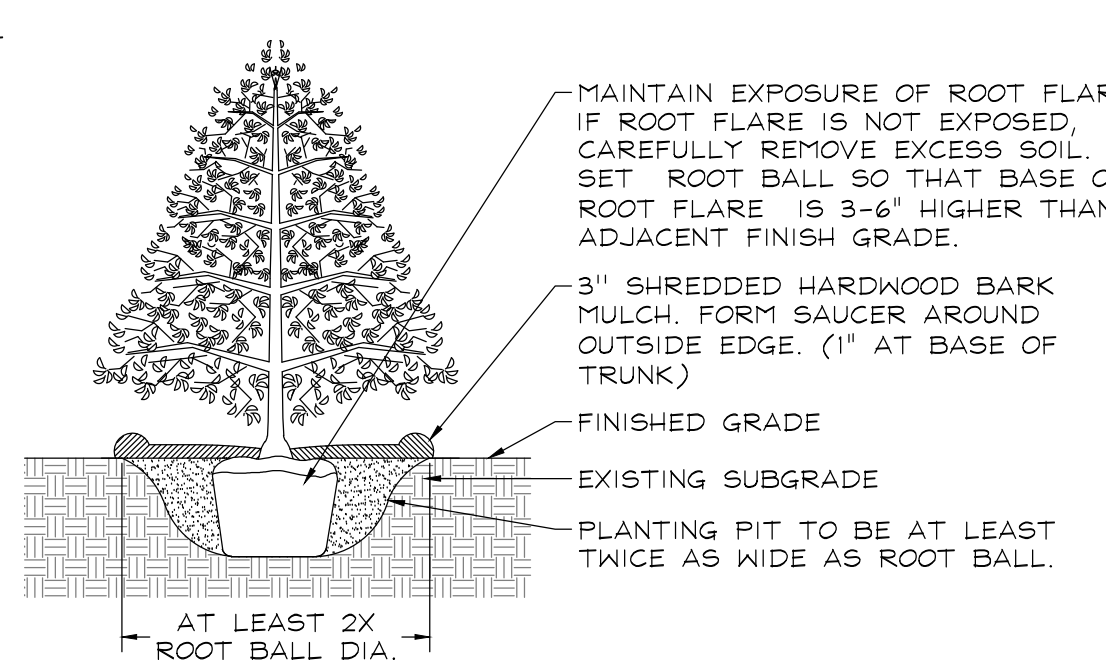
PERENNIALS AND GROUNDCOVERS
NOT TO SCALE



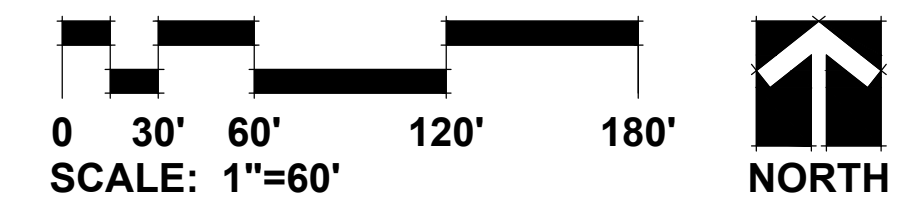
DECIDUOUS AND EVERGREEN SHRUBS
NOT TO SCALE



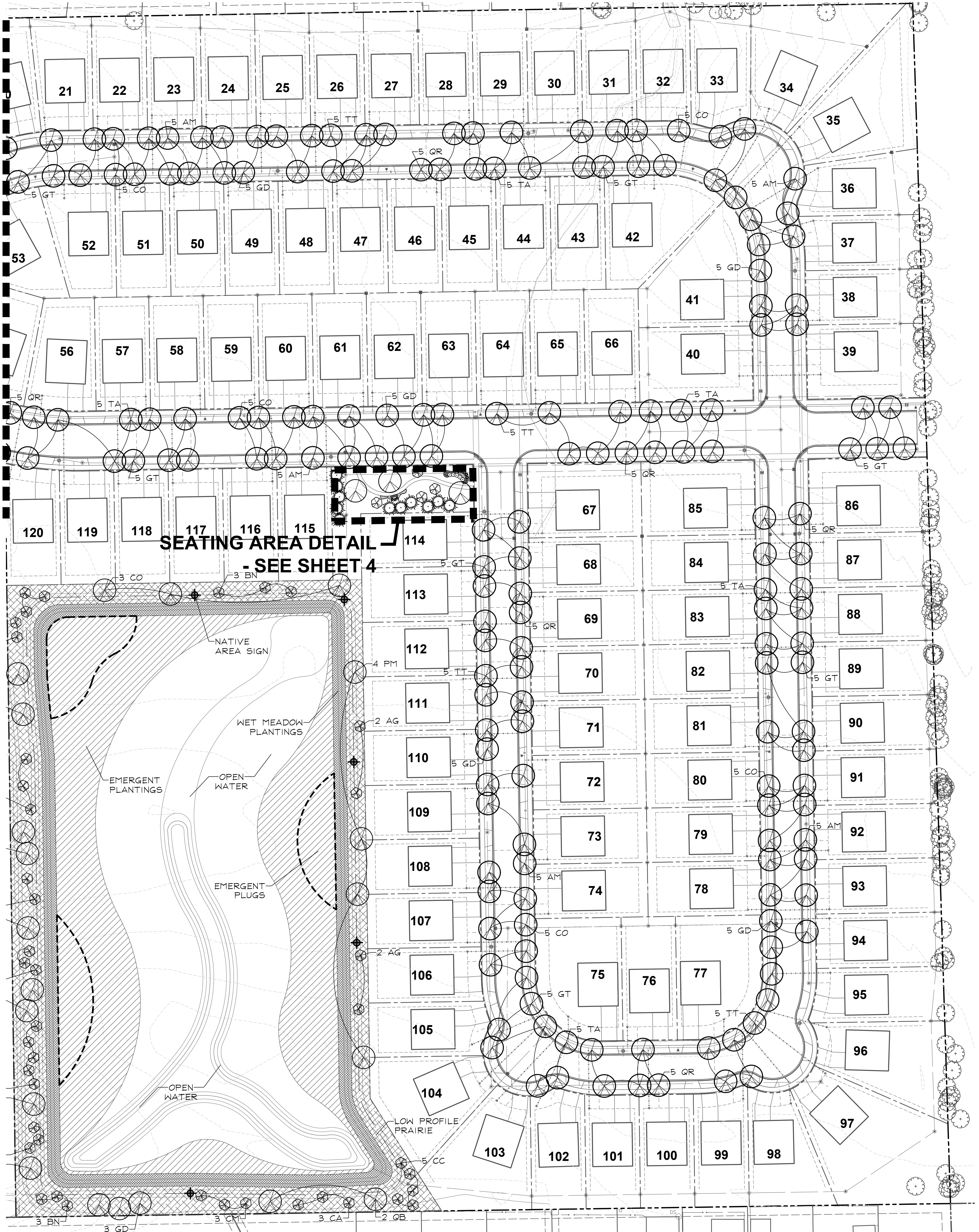
DECIDUOUS TREES
NOT TO SCALE



EVERGREEN TREES
NOT TO SCALE



SEE SHEET 2



SEATING AREA DETAIL - SEE SHEET 4

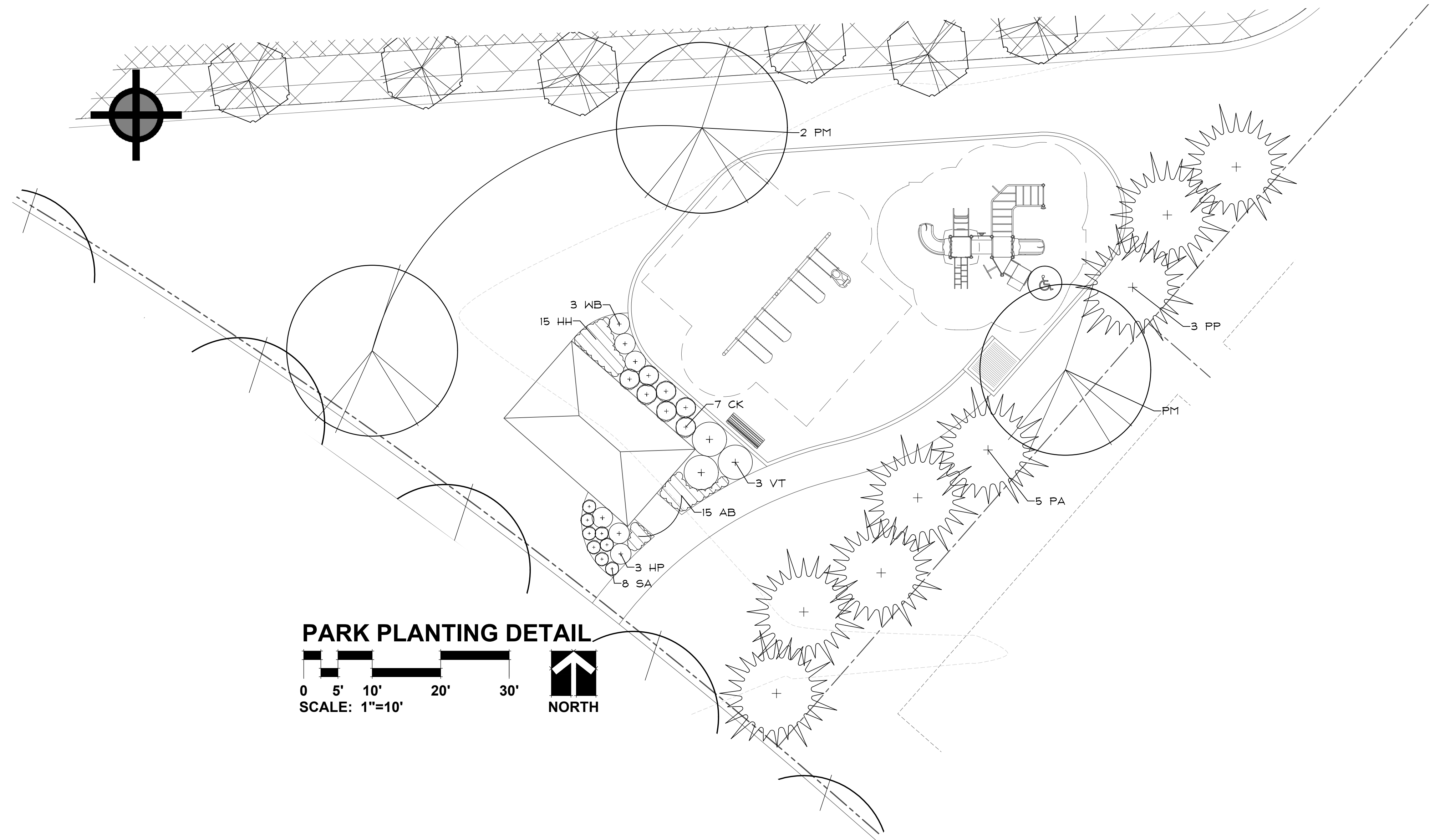




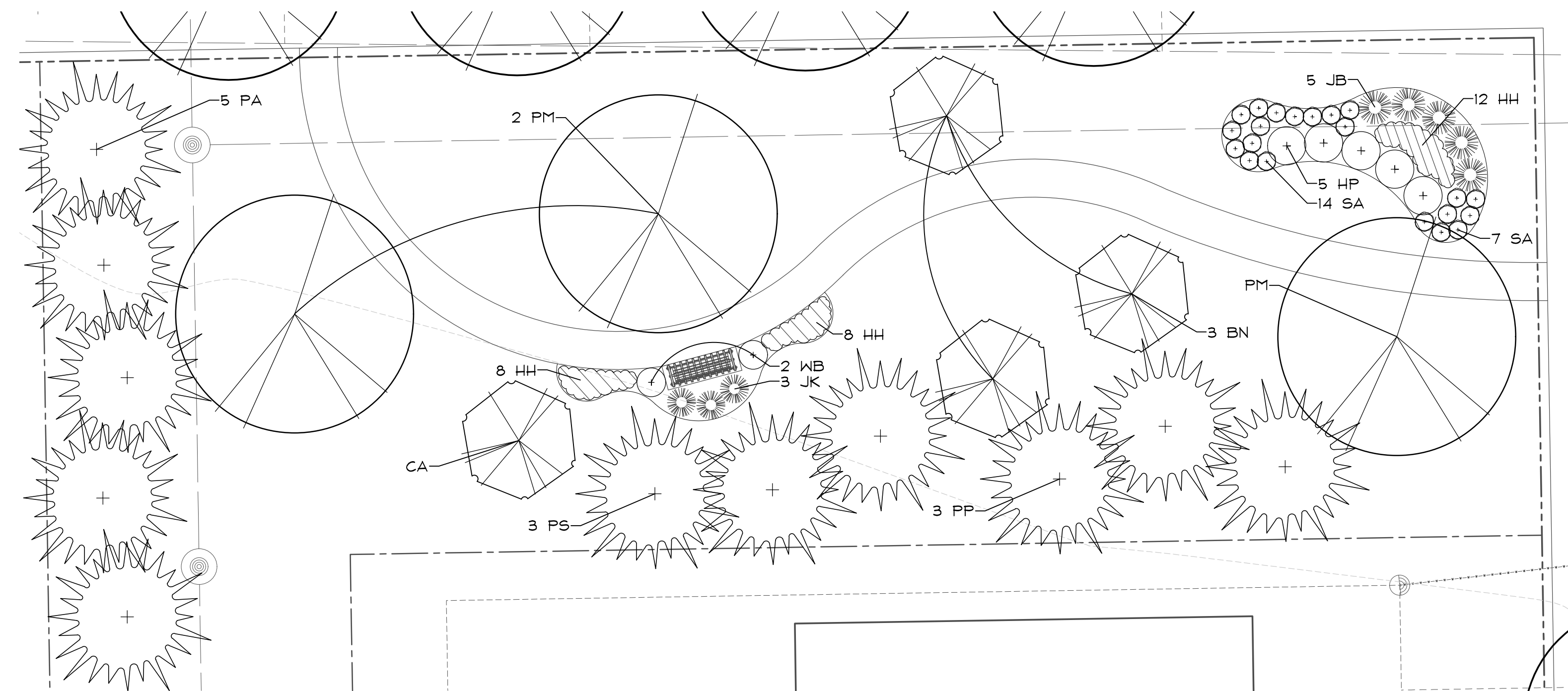
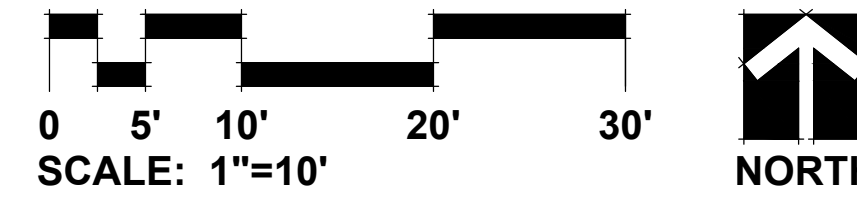
GARY R. WEBER
ASSOCIATES, INC.
LAND PLANNING
ECOLOGICAL CONSULTING
LANDSCAPE ARCHITECTURE
402 W. LIBERTY DRIVE
WHEATON, ILLINOIS 60187
PHONE: 630-668-7197
www.grwainc.com

CLIENT
D.R. HORTON
America's Builder
1750 E. GOLF ROAD, SUITE 925
SCHAUMBURG, IL 60173
CIVIL ENGINEER
MANHARD CONSULTING
333 E. BUTTERFIELD RD. STE. 600
LOMBARD, IL 60148

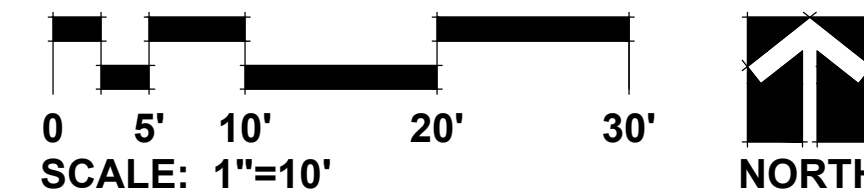
PRAIRIE LANDING
JOLIET, ILLINOIS
LANDSCAPE DETAILS



PARK PLANTING DETAIL



**SEATING AREA
PLANTING DETAIL**



REVISIONS	DATE
1	11.14.2024

DATE 11.01.2024
PROJECT NO. DR23154
DRAWN SMR
CHECKED DHS
SHEET NO.

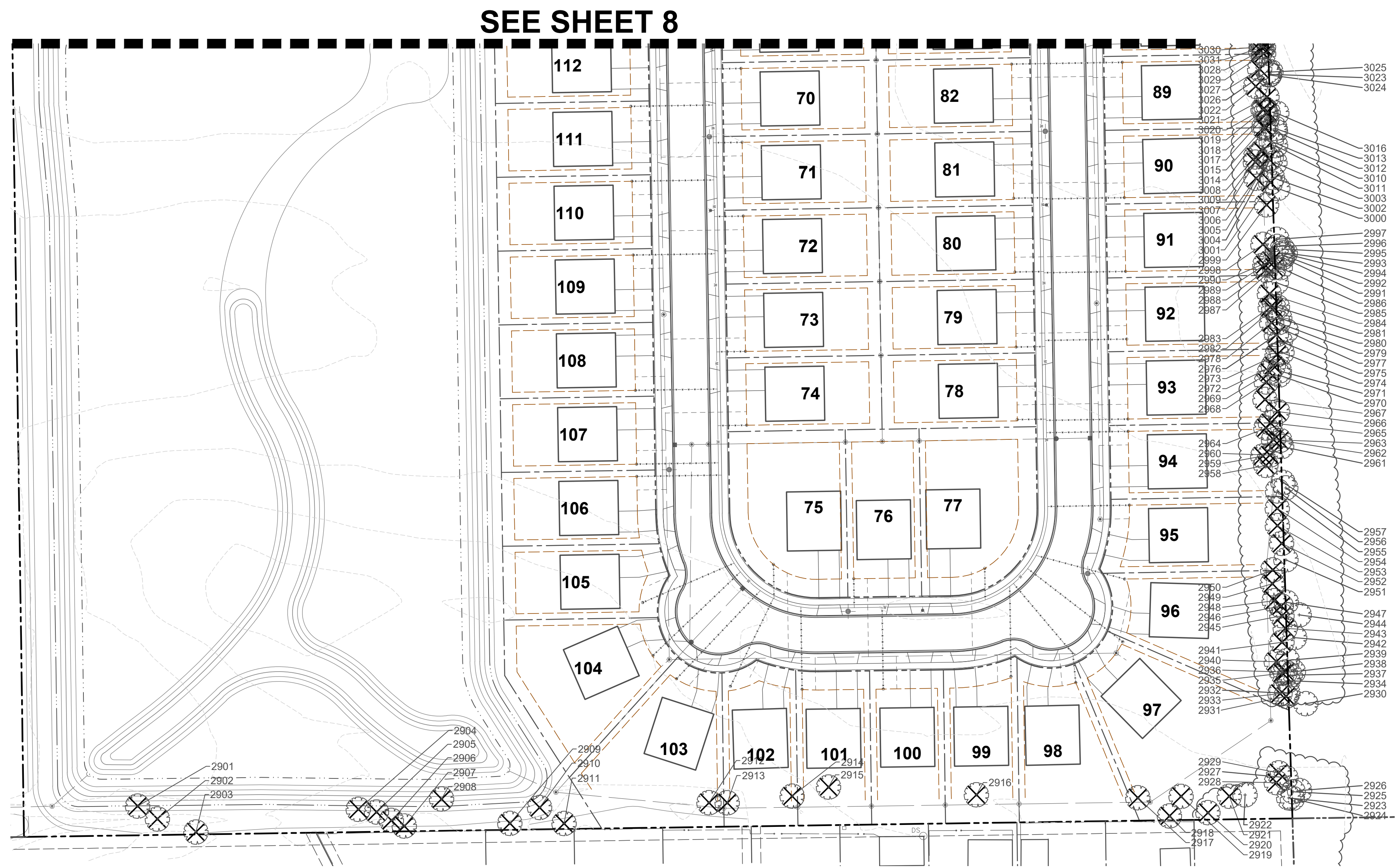
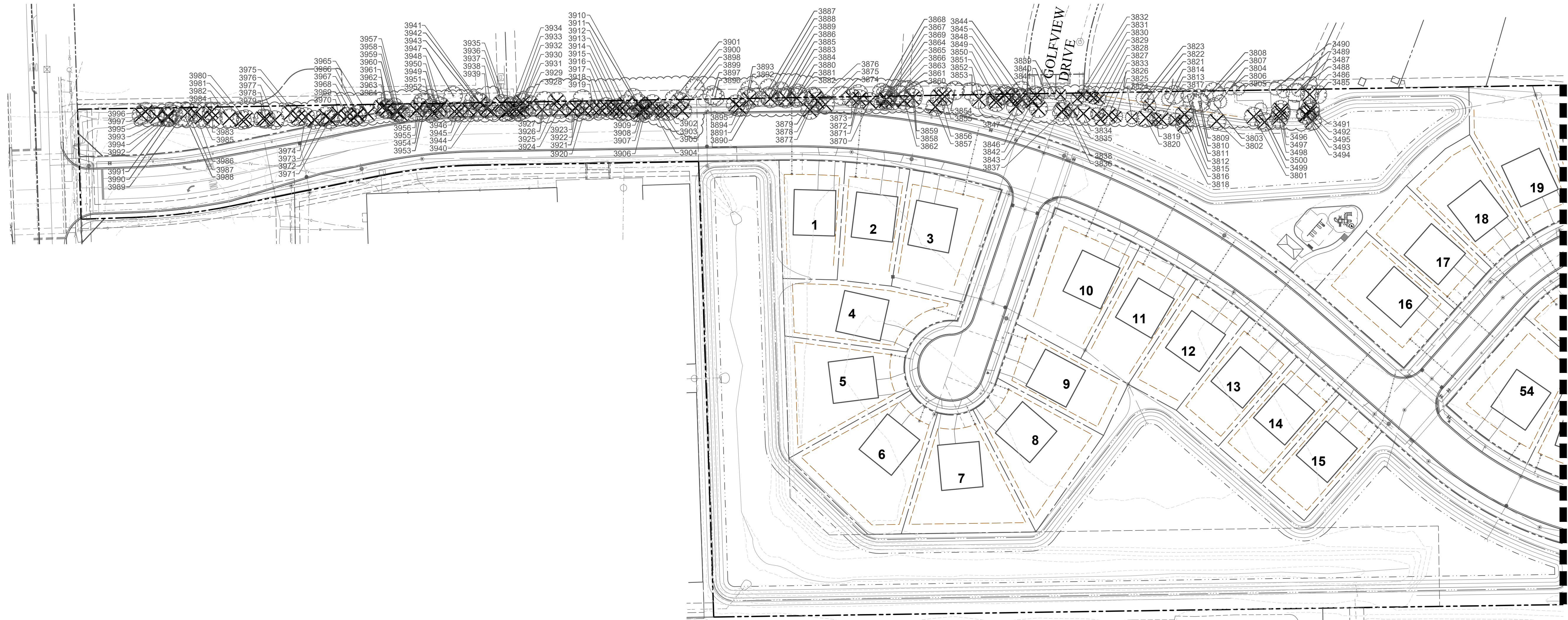




GARY R. WEBER
ASSOCIATES, INC.
LAND PLANNING
ECOLOGICAL CONSULTING
LANDSCAPE ARCHITECTURE
402 W. LIBERTY DRIVE
WHEATON, ILLINOIS 60187
PHONE: 630-668-7197
www.grwainc.com

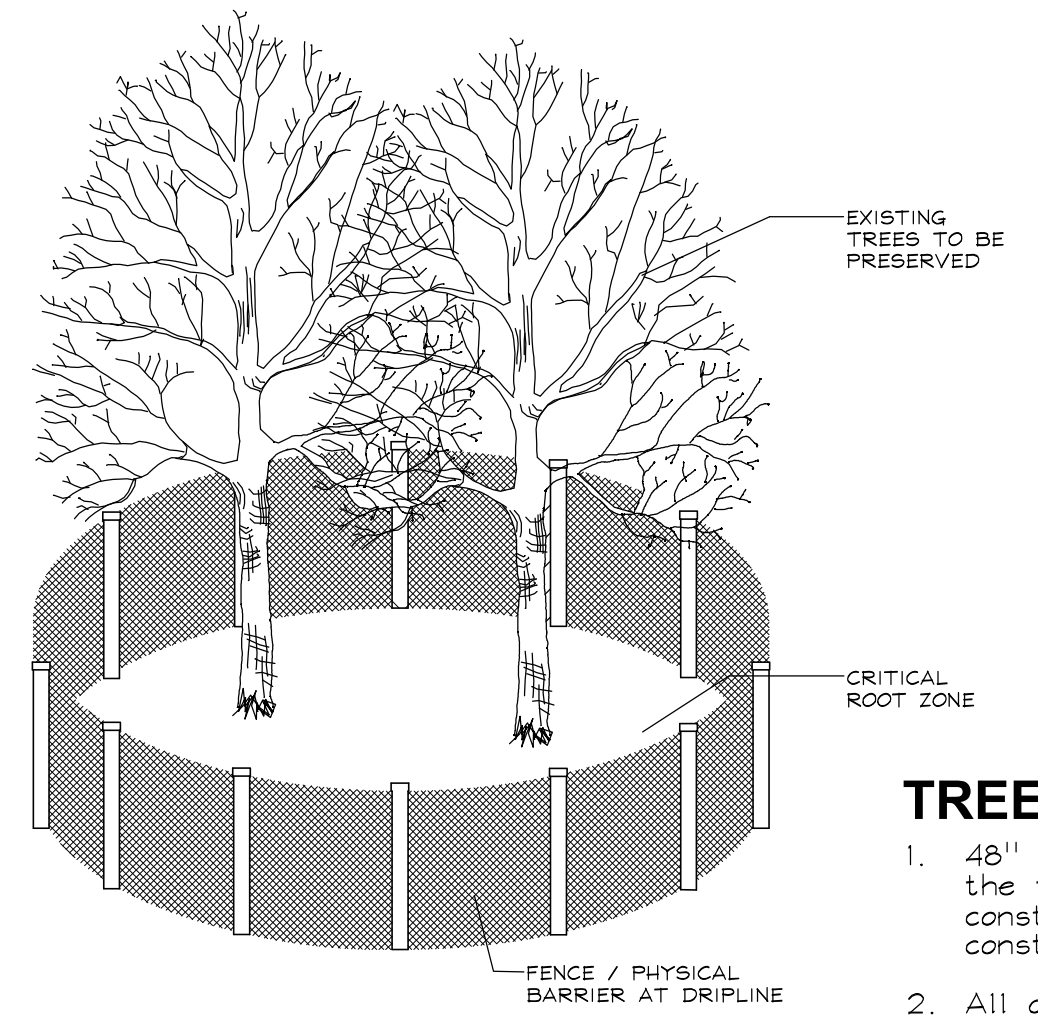
CLIENT
D.R. HORTON
America's Builder
1750 E. GOLF ROAD, SUITE 925
SCHAUMBURG, IL 60173
CIVIL ENGINEER
MANHARD CONSULTING
333 E. BUTTERFIELD RD. STE. 600
LOMBARD, IL 60148

PRAIRIE LANDING
JOLIET, ILLINOIS
TREE PRESERVATION PLAN



LEGEND

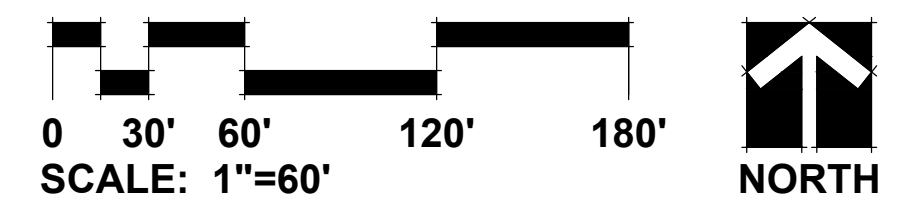
- 1234 EXISTING TREE
- 1234 EXISTING TREE TO BE REMOVED



TREE PRESERVATION DETAIL
(NOT TO SCALE)
SEE NOTES

TREE PRESERVATION NOTES

1. 48" high snow fence or wood barriers shall extend to the dripline of the tree or tree mass whenever possible, shall be installed before construction begins, and should not be removed until the completion of construction.
2. All accidental damage to existing trees that are to be preserved shall be promptly treated as required in accordance with recognized horticultural practices and the instructions of the professional Arborist, Landscape Architect or Horticulturist.
3. Broken or badly bruised branches shall be removed with a clean cut. If recommended by the professional Arborist, Landscape Architect or Horticulturist.
4. Care shall be exercised by the contractors to protect all overhead limbs and branches from damage by contact with material, machinery or equipment and by damage from engine exhaust.
5. Contractors shall protect trees and vegetation against spills or discharge of fuels, lubricating oils, hydraulic fluids, anti-freeze and coolants, calcium chloride, lime and all other similar hydrocarbons, organic chemicals, and other materials which can be harmful.
6. When underground utilities are proposed within 5' of a preserved tree trunk, they must be augered if possible.



REVISIONS	DATE
1	11.14.2024

DATE 11.01.2024
PROJECT NO. DR23154
DRAWN SMR
CHECKED DHS
SHEET NO.



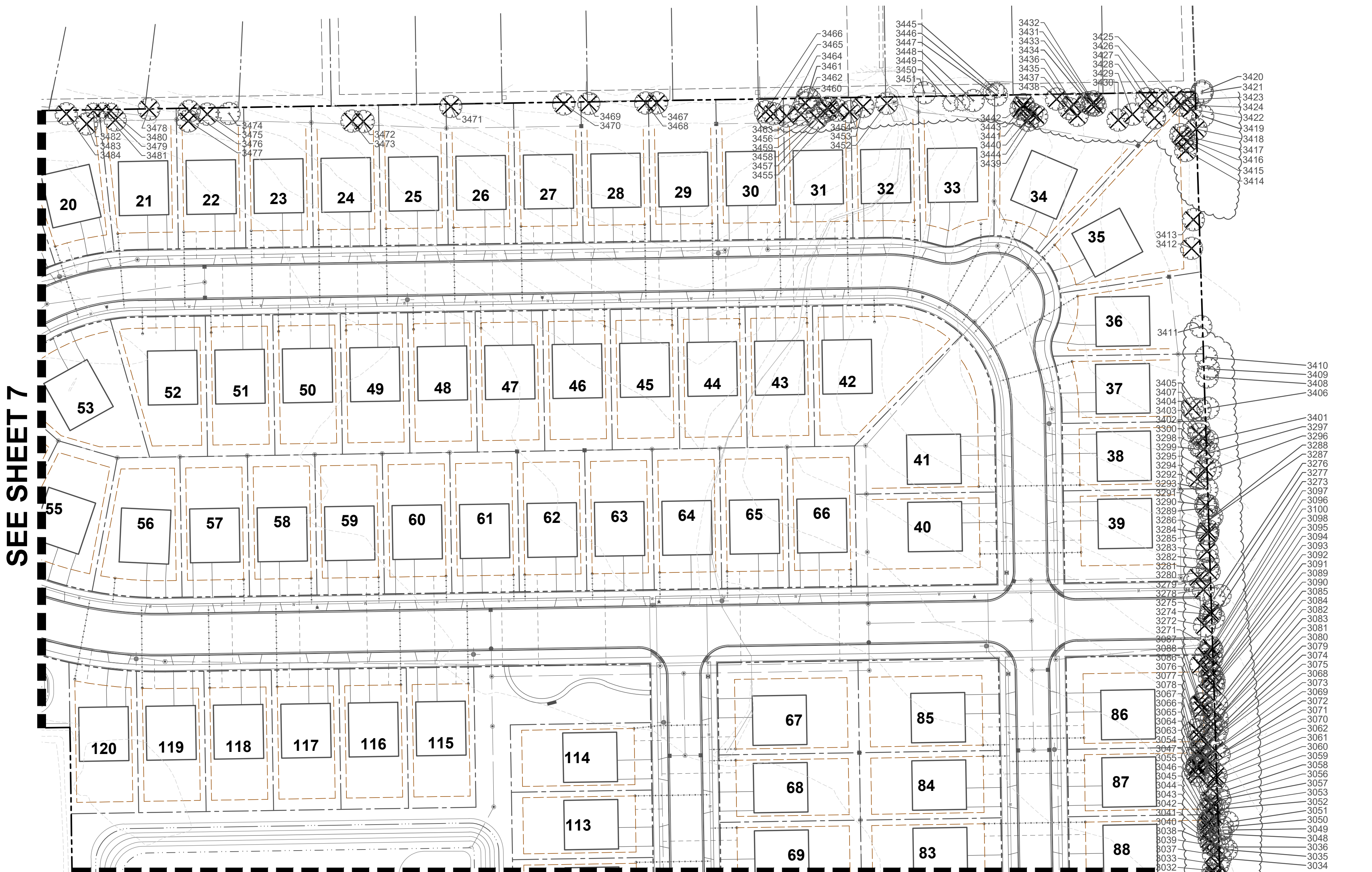
RATING AND SURVEY CRITERIA

- 1) Trees measured at 4.5 ft. above the ground - DBH (diameter Breast Height)
- 2) All trees 4" DBH and above tagged. Dead trees were tagged for removal. Invasive shrubs were not tagged.
- 3) Health Rating:

Rating	Description	Criteria
1	Excellent	Less than 10% dead wood, typical growth for species, no observed defects
2	Good	Less than 20% dead wood, minor defects, sound structure, no decay
3	Fair	Less than 30% dead wood, minor crown die-back, minor trunk damage or cavities
4	Fair to Poor	Approximately 30-50% dead wood, lacking full crown, minor disease evidence, trunk damage
5	Poor	Over 50% dead wood, lacking full crown, disease or decay evident, structural damage/cavities
6	Dead	Less than 10% living wood, greater than 50% missing bark, adventitious growth only, decay

TOTAL TREE COUNT: 524 (2901-3098, 3100, 3271-3300, 3401-3500, 3801-3997)

TAG NO.	SCIENTIFIC NAME	COMMON NAME	DBH (inches)	CONDITION	STRUCTURE	HEALTH	PROPOSED ACTION
2901	<i>Prunus caryocarpa</i>	Pear	6	3 - Fair	Crowded		Remove
2902	<i>Fraxinus sp.</i>	Ash	14.14	5 - Poor	V-shaped joint/Double Leader/Split Risk	Dead Leader	Remove
2903	<i>Prunus caryocarpa</i>	Pear	5	2 - Good			Remove
2904	<i>Ostrya triacanthos</i>	Honey Locust	14	2 - Good			Remove
2905	<i>Morus sp.</i>	Crabapple	7	3 - Fair		Trunk Scar	Remove
2906	<i>Prunus serotina</i>	Black Cherry	18	3 - Fair	Unbalanced	>50% dead wood/Dead Leader/Adventitious Growth	Remove
2907	<i>Fraxinus sp.</i>	Ash	7	5 - Poor			Remove
2908	<i>Fraxinus sp.</i>	Ash	7.8	5 - Poor	V-shaped joint/Double Leader/Split Risk	Trunk Scar	Remove
2909	<i>Prunus serotina</i>	Black Cherry	11	4 - Fair/Poor	Lean		Remove
2910	<i>Fraxinus sp.</i>	Ash	6.5.5	5 - Poor	V-shaped joint/Multi Leader/Split Risk	30% dead wood	Remove
2911	<i>Fraxinus sp.</i>	Ash	6	3 - Fair	Lean/Unbalanced		Remove
2912	<i>Morus alba</i>	White Mulberry	23.22.14	5 - Poor	V-shaped joint/Double Leader/Multi Leader	Trunk Scar	Remove
2913	<i>Fraxinus sp.</i>	Ash	11	3 - Fair	Lean	10% dead wood	Remove
2914	<i>Fraxinus sp.</i>	Ash	7.6	5 - Poor	V-shaped joint/Double Leader/Split Risk	20% dead wood	Remove
2915	<i>Prunus caryocarpa</i>	Pear	7.5.3	5 - Poor	V-shaped joint/Multi Leader/Split Risk		Remove
2916	<i>Prunus serotina</i>	Black Cherry	23	4 - Fair/Poor	Fused Leaders	Fungus-Stem	Remove
2917	<i>Acer saccharinum</i>	Silver Maple	11.10	5 - Poor	V-shaped joint/Double Leader/Split Risk	Trunk Scar	Remove
2918	<i>Prunus serotina</i>	Black Cherry	18.13	5 - Poor	V-shaped joint/Double Leader/Split Risk/Broken Leader	Trunk Scar	Remove
2919	<i>Prunus caryocarpa</i>	Pear	17	2 - Good	Lean		Remove
2920	<i>Morus alba</i>	White Mulberry	18.13	5 - Poor	V-shaped joint/Double Leader/Split Risk	Trunk Scar	Remove
2921	<i>Prunus serotina</i>	Black Cherry	11.8	5 - Poor	V-shaped joint/Double Leader/Split Risk	>50% dead wood/Trunk Damage	Remove
2922	<i>Juniperus virginiana</i>	Red Cedar	8.35 Tall	3 - Fair	Unbalanced		Preserve
2923	<i>Celtis occidentalis</i>	Hackberry	22	2 - Good	Unbalanced		Preserve
2924	<i>Maclura pomifera</i>	Osage Orange	20.18.16	5 - Poor	V-shaped joint/Multi Leader/Split Risk	Wood rot/Trunk Scar	Preserve
2925	<i>Maclura pomifera</i>	Osage Orange	15	4 - Fair/Poor	Lean/Crown Lean/Crowded	30% dead wood	Preserve
2926	<i>Maclura pomifera</i>	Osage Orange	18	5 - Poor	Horizontal Growth	40% dead wood/Trunk Damage	Preserve
2927	<i>Celtis occidentalis</i>	Hackberry	28	2 - Good	Unbalanced		Preserve
2928	<i>Celtis occidentalis</i>	Hackberry	7	4 - Fair/Poor	Crown Lean/Crowded		Remove
2929	<i>Celtis occidentalis</i>	Hackberry	6.2	5 - Poor	V-shaped joint/Double Leader/Split Risk/Crown Lean		Remove
2930	<i>Prunus serotina</i>	Black Cherry	12.7.6	5 - Poor	V-shaped joint/Multi Leader/Split Risk	Wood rot/Cavity	Remove
2931	<i>Prunus serotina</i>	Black Cherry	9	4 - Fair/Poor	Unbalanced/Crown Lean		Remove
2932	<i>Prunus serotina</i>	Black Cherry	9	3 - Fair	Lean		Remove
2933	<i>Prunus serotina</i>	Black Cherry	14	4 - Fair/Poor	Unbalanced	Trunk Damage	Remove
2934	<i>Prunus serotina</i>	Black Cherry	28	3 - Fair	Lean	10% dead wood/Trunk Scar	Remove
2935	<i>Prunus serotina</i>	Black Cherry	11	4 - Fair/Poor	Lean/Unbalanced	Fungus-Stem	Remove
2936	<i>Prunus serotina</i>	Black Cherry	7	4 - Fair/Poor	Lean/Unbalanced		Remove
2937	<i>Prunus serotina</i>	Black Cherry	4	6 - Dead			Remove
2938	<i>Prunus serotina</i>	Black Cherry	6	5 - Poor	Lean		Remove
2939	<i>Celtis occidentalis</i>	Hackberry	12	3 - Fair	Unbalanced	30% dead wood/Sparse foliage	Remove
2940	<i>Prunus serotina</i>	Black Cherry	8	4 - Fair/Poor	Lean/Crown Lean/Crowded		Remove
2941	<i>Prunus serotina</i>	Black Cherry	14	4 - Fair/Poor	Unbalanced/Crowded		Remove
2942	<i>Morus alba</i>	White Mulberry	23.13.10	5 - Poor	V-shaped joint/Multi Leader/Split Risk	Dead Leader/Cavity	Remove
2943	<i>Prunus serotina</i>	Black Cherry	21	5 - Poor	Crown Lean/Crowded	20% dead wood/Wood rot/Trunk Damage	Remove
2944	<i>Prunus serotina</i>	Black Cherry	17	3 - Fair	Unbalanced	20% dead wood	Remove
2945	<i>Prunus serotina</i>	Black Cherry	12	6 - Dead			Remove
2946	<i>Prunus serotina</i>	Black Cherry	6.5	5 - Poor	V-shaped joint/Double Leader/Split Risk	Dead Leader/Cavity	Remove
2947	<i>Prunus serotina</i>	Black Cherry	6	6 - Dead			Remove
2948	<i>Maclura pomifera</i>	Osage Orange	14	5 - Poor	Unbalanced/Crowded	Cavity	Remove
2949	<i>Maclura pomifera</i>	Osage Orange	7	4 - Fair/Poor	Unbalanced/Crowded		Remove
2950	<i>Maclura pomifera</i>	Osage Orange	13	5 - Poor	Strong lean/Crowded	30% dead wood	Remove
2951	<i>Prunus serotina</i>	Black Cherry	15.11	4 - Fair/Poor	U-shaped joint/Double Leader/Lean/Crown Lean		Remove
2952	<i>Maclura pomifera</i>	Osage Orange	3.20.20.15.14.11	5 - Poor	V-shaped joint/Multi Leader/Split Risk	30% dead wood	Remove
2953	<i>Maclura pomifera</i>	Osage Orange	2.20.19.18.15.13	5 - Poor	V-shaped joint/Multi Leader/Split Risk	Cavity	Remove
2954	<i>Celtis occidentalis</i>	Hackberry	20	4 - Fair/Poor	Crown Lean/Crowded		Remove
2955	<i>Celtis occidentalis</i>	Hackberry	14	3 - Fair	Crown Lean/Crowded		Remove
2956	<i>Prunus serotina</i>	Black Cherry	18	4 - Fair/Poor	Lean	10% dead wood/Trunk Scar	Remove
2957	<i>Prunus serotina</i>	Black Cherry	13	4 - Fair/Poor	Lean/Crown Lean	20% dead wood/Dead Limbs	Remove
2958	<i>Maclura pomifera</i>	Osage Orange	8.8	5 - Poor	V-shaped joint/Double Leader/Split Risk/Crowded		Remove
2959	<i>Ulmus pumila</i>	Siberian Elm	4	4 - Fair/Poor	Crown Lean/Crowded/Broken Limb		Remove
2960	<i>Maclura pomifera</i>	Osage Orange	26	5 - Poor	Fused Leaders/Lean	Trunk Damage	Remove
2961	<i>Prunus serotina</i>	Black Cherry	12	6 - Dead			Remove
2962	<i>Prunus serotina</i>	Black Cherry	13	6 - Dead			Remove
2963	<i>Prunus serotina</i>	Black Cherry	20	3 - Fair	Unbalanced/Crown Lean		Remove
2964	<i>Ulmus pumila</i>	Siberian Elm	6	3 - Fair	Unbalanced		Remove
2965	<i>Prunus serotina</i>	Black Cherry	5	5 - Poor	Strong lean/Crowded		Remove
2966	<i>Prunus serotina</i>	Black Cherry	29	5 - Poor	Split Leaders/Strong lean		Remove
2967	<i>Maclura pomifera</i>	Osage Orange	7.2	5 - Poor	V-shaped joint/Double Leader/Split Risk/Crowded		Remove
2968	<i>Celtis occidentalis</i>	Hackberry	9	2 - Good	Crowded		Remove
2969	<i>Celtis occidentalis</i>	Hackberry	4	2 - Good	Crowded		Remove
2970	<i>Prunus serotina</i>	Black Cherry	15.10	5 - Poor	U-shaped joint/Double Leader/Broken Leader	20% dead wood	Remove
2971	<i>Prunus serotina</i>	Black Cherry	21	5 - Poor	U-shaped joint/Double Leader/Broken Leader	30% dead wood/Wood rot/Cavity/Trunk Damage	Remove
2972	<i>Prunus serotina</i>	Black Cherry	9	5 - Poor	Strong lean/Crowded		Remove
2973	<i>Morus alba</i>	White Mulberry	14	3 - Fair	Crown Lean/Crowded		Remove
2974	<i>Prunus serotina</i>	Black Cherry	24.17	5 - Poor	V-shaped joint/Double Leader/Broken Limb	20% dead wood/Trunk Damage	Remove
2975	Unknown	Unknown	9	6 - Dead			Remove
2976	<i>Prunus serotina</i>	Black Cherry	14	5 - Poor	Unbalanced	30% dead wood/Trunk Damage	Remove
2977	<i>Morus alba</i>	White Mulberry	15.13.9	4 - Fair/Poor	V-shaped joint/Multi Leader/Split Risk/Lean/Crown Lean		Remove
2978	<i>Prunus serotina</i>	Black Cherry	4	4 - Fair/Poor	Lean/Crown Lean/Crowded		Remove
2979	<i>Prunus serotina</i>	Black Cherry	24	3 - Fair	Lean/Crown Lean/Crowded	10% dead wood	Remove
2980	<i>Prunus serotina</i>	Black Cherry	7	5 - Poor	Lean/Crown Lean/Crowded	Trunk Damage	Remove
2981	<i>Prunus serotina</i>	Black Cherry	23	3 - Fair	Unbalanced		Remove
2982	<i>Prunus serotina</i>	Black Cherry	8	6 - Dead			Remove
2983	<i>Prunus serotina</i>	Black Cherry	14.12	5 - Poor	U-shaped joint/Double Leader/Lean	Cavity/Trunk Damage	Remove
2984	<i>Prunus serotina</i>	Black Cherry	8	4 - Fair/Poor	Lean/Crown Lean/Crowded		Remove
2985	<i>Prunus serotina</i>	Black Cherry	18	5 - Poor	Broken Limb	Dead Limbs/Fungus-Stem/Trunk Damage	Remove
2986	<i>Prunus serotina</i>	Black Cherry	7	3 - Fair	Lean		Remove
2987	<i>Prunus serotina</i>	Black Cherry	6	4 - Fair/Poor	Lean	50% dead wood	Remove
2988	<i>Ulmus pumila</i>	Siberian Elm	13	4 - Fair/Poor	Lean/Unbalanced/Broken Limb	10% dead wood	Remove
2989	<i>Prunus serotina</i>	Black Cherry	14	3 - Fair	Lean		Remove
2990	<i>Prunus serotina</i>	Black Cherry	8	4 - Fair/Poor	Lean/Crown Lean/Crowded		Remove
2991	<i>Prunus serotina</i>	Black Cherry	8	5 - Poor	Strong lean/Crown Lean	50% dead wood/Dead Leader	Remove
2992	Unknown	Unknown	6	6 - Dead			Remove
2993	<i>Prunus serotina</i>	Black Cherry	10	4 - Fair/Poor	Lean/Crown Lean	20% dead wood	Remove
2994	<i>Prunus serotina</i>	Black Cherry	17	4 - Fair/Poor	Lean	20% dead wood/Trunk Scar	Remove
2995	<i>Prunus serotina</i>	Black Cherry	10	4 - Fair/Poor	Lean/Crown Lean/Crowded		Remove
2996	<i>Prunus serotina</i>	Black Cherry	7	4 - Fair/Poor	Lean/Crown Lean	Fungus-Stem	Remove
2997	<i>Celtis occidentalis</i>	Hackberry	15	2 - Good	Unbalanced		Remove
2998	<i>Ulmus pumila</i>	Siberian Elm	4	4 - Fair/Poor	Crown Lean/Crowded	20% dead wood	Remove
2999	<i>Prunus serotina</i>	Black Cherry	12	5 - Poor	Strong lean		Remove
3000	<i>Prunus serotina</i>	Black Cherry	16.14.13.10	5 - Poor	V-shaped joint/Multi Leader/Split Risk	20% dead wood/Cavity	Remove
3001	<i>Prunus serotina</i>	Black Cherry	5	5 - Poor	Strong lean	Cavity	Remove
3002	<i>Prunus serotina</i>	Black Cherry	16.12.12	5 - Poor	V-shaped joint/Multi Leader/Split Risk	Dead Leader/Cavity	Remove
3003	<i>Prunus serotina</i>	Black Cherry	24	4 - Fair/Poor	Fused Leaders/Lean	10% dead wood	Remove
3004	<i>Prunus serotina</i>	Black Cherry	10	3 - Fair	Lean		Remove
3005	<i>Prunus serotina</i>	Black Cherry	8	4 - Fair/Poor	Crown Lean/Crowded		Remove
3006	<i>Prunus serotina</i>	Black Cherry	5	3 - Fair	Lean		Remove
3007	<i>Prunus serotina</i>	Black Cherry	4	4 - Fair/Poor	Lean/Crown Lean/Crowded		Remove
3008	<i>Prunus serotina</i>	Black Cherry	5	4 - Fair/Poor	Lean/Crown Lean		Remove
3009	<i>Prunus serotina</i>	Black Cherry	8	6 - Dead			Remove
3010	<i>Acer negundo</i>	Box Elder	6	4 - Fair/Poor	Lean/Crown Lean		Remove
3011	<i>Prunus serotina</i>	Black Cherry	10	3 - Fair	Lean/Unbalanced		Remove
3012	<i>Celtis occidentalis</i>	Hackberry	18.4	3 - Fair	Double Leader	Trunk Scar	Remove
3013	<i>Prunus serotina</i>	Black Cherry	21.17	6 - Poor	V-shaped joint/Double Leader/Split Risk	Cavity	Remove
3014	<i>Celtis occidentalis</i>	Hackberry	5	3 - Fair	Unbalanced/Crown Lean		Remove
3015	<i>Prunus serotina</i>	Black Cherry	10	3 - Fair	Unbalanced		Remove
3016	<i>Celtis occidentalis</i>	Hackberry	17	4 - Fair/Poor	Unbalanced		Remove
3017	<i>Prunus serotina</i>	Black Cherry	5	6 - Dead			Remove
3018	<i>Prunus serotina</i>	Black Cherry	7	5 - Poor	Strong lean	Trunk Scar	Remove
3019	<i>Prunus serotina</i>	Black Cherry	7	4 - Fair/Poor	Lean/Crowded		Remove
3020	<i>Prunus serotina</i>	Black Cherry	20	4 - Fair/Poor	Lean/Unbalanced	Fungus-Stem/Trunk Damage	Remove
3021	<i>Celtis occidentalis</i>	Hackberry	24	2 - Good	Crowded		Remove
3022	<i>Prunus serotina</i>	Black Cherry	6	4 - Fair/Poor	Lean/Crowded	20% dead wood	Remove
3023	<i>Celtis occidentalis</i>	Hackberry	6	3 - Fair	Crown Lean/Crowded		Remove
3024	<i>Celtis occidentalis</i>	Hackberry	10	2 - Good	Crowded		Remove
3025	<i>Prunus serotina</i>	Black Cherry	36	3 - Fair	Crown Lean/Crowded	Fungus-Stem/Trunk Scar	Remove
3026	<i>Celtis occidentalis</i>	Hackberry	7	3 - Fair	Crown Lean/Crowded		Remove
3027	<i>Prunus serotina</i>	Black Cherry	4.3	5 - Poor	V-shaped joint/Double Leader/Split Risk/Lean/Crowded		Remove
3028	<i>Prunus serotina</i>	Black Cherry	9	4 - Fair/Poor	Lean/Crown Lean/Crowded		Remove
3029	<i>Prunus serotina</i>	Black Cherry	4	4 - Fair/Poor	Lean/Crown Lean		Remove
3030	Unknown	Unknown	7	6 - Dead			Remove
3031	<i>Prunus serotina</i>	Black Cherry	9.7.5	5 - Poor	V-shaped joint/Multi Leader/Split Risk/Strong lean	Trunk Damage	Remove
3032	<i>Prunus serotina</i>	Black Cherry	8	5 - Poor	Strong lean	Trunk Damage	Remove
3033	<i>Acer negundo</i>	Box Elder	17	4 - Fair/Poor	Unbalanced	Trunk Scar	Remove
3034	<i>Prunus serotina</i>	Black Cherry	22	4 - Fair/Poor	Lean	30% dead wood/Dead Limbs/Trunk Damage	Remove
3035	<i>Celtis occidentalis</i>	Hackberry	16	3 - Fair	Lean/Unbalanced	10% dead wood	Remove
3036	<i>Celtis occidentalis</i>	Hackberry	12	3 - Fair	Lean/Unbalanced		Remove
3037	<i>Prunus serotina</i>	Black Cherry	14	4 - Fair/Poor	Lean/Unbalanced	20% dead wood	Remove
3038	<i>Celtis occidentalis</i>	Hackberry	9	3 - Fair	Unbalanced/Crown Lean	Trunk Scar	Remove
3039	<i>Prunus serotina</i>	Black Cherry	12	3 - Fair	Lean		Remove
3040	<i>Prunus serotina</i>	Black Cherry	9	4 - Fair/Poor	Lean/Crown Lean/Crowded		Remove
3041	<i>Prunus serotina</i>	Black Cherry	12	5 - Poor	Strong lean/Crowded		Remove
3042	<i>Morus alba</i>	White Mulberry	14	4 - Fair/Poor	Lean/Crown Lean/Crowded	Trunk Scar	Remove
3043	<i>Prunus serotina</i>	Black Cherry	4	6 - Dead			Remove
3044	<i>Prunus serotina</i>	Black Cherry	8	4 - Fair/Poor	Lean/Crowded		Remove
3045	<i>Prunus serotina</i>	Black Cherry	9	4 - Fair/Poor	Lean/Crowded		Remove
3046	<i>Prunus serotina</i>	Black Cherry	8	4 - Fair/Poor	Lean/Crown Lean/Crowded		Remove
3047	<i>Prunus serotina</i>	Black Cherry	6	4 - Fair/Poor	Lean/Crown Lean/Crowded		Remove
3048	<i>Maclura pomifera</i>	Osage Orange	7.4	5 - Poor	V-shaped joint/Double Leader/Split Risk		Remove



GRWA

GARY R. WEBER
ASSOCIATES, INC.
LAND PLANNING
ECOLOGICAL CONSULTING
LANDSCAPE ARCHITECTURE
402 W. LIBERTY DRIVE
WHEATON, ILLINOIS 60187
PHONE: 630-668-7197
www.grwainc.com

CLIENT

D.R. HORTON
America's Builder
1750 E. GOLF ROAD, SUITE 925
SCHAUMBURG, IL 60173
CIVIL ENGINEER

MANHARD CONSULTING
333 E. BUTTERFIELD RD. STE. 600
LOMBARD, IL 60148

PRAIRIE LANDING
JOLIET, ILLINOIS

TREE PRESERVATION PLAN & INVENTORY

1 REVISIONS 11.14.2024

DATE 11.01.2024
PROJECT NO. DR23154
DRAWN SMR
CHECKED DHS
SHEET NO. 8 OF 10

RATING AND SURVEY CRITERIA

- 1) Trees measured at 4.5 ft above the ground - DBH (diameter Breast Height)
- 2) All trees 4" DBH and above tagged. Dead trees were tagged for removal. Invasive shrubs were not tagged.

3) Health Rating:

Rating	Description	Criteria
1	Excellent	Less than 10% dead wood, typical growth for species, no observed defects
2	Good	Less than 20% dead wood, minor defects, sound structure, no decay
3	Fair	Less than 30% dead wood, minor crown die-back, minor trunk damage or cavities
4	Fair to Poor	Approximately 35-50% dead wood, lacking full crown, minor disease evidence, trunk damage
5	Poor	Over 50% dead wood, lacking full crown, disease or decay evident structural damage/cavities
6	Dead	Less than 10% living wood, greater than 50% missing bark, adventitious growth only decay

TOTAL TREE COUNT: 5241 (2901-3098, 3100, 3211-3300, 3401-3500, 3801-3997)

ID	Species	Health	DBH	Height	Notes	Remarks
3048	Celtis occidentalis	Hackberry	4	3-Fair	Crowded	
3050	Maclura pomifera	Osage Orange	14.10.10.9	5-Poor	Unbalanced/Crowded	Dead Leader/Cavity
3051	Celtis occidentalis	Hackberry	20	2-Good	V-shaped joint/Multi Leader/Split Risk	
3052	Pinus serotina	Black Cherry	10	3-Fair	Unbalanced/Crowded	
3053	Pinus serotina	Black Cherry	14	3-Fair	Unbalanced/Crowded	
3054	Pinus serotina	Black Cherry	8	4-Fair/Poor	Lean/Unbalanced	20% dead wood
3055	Pinus serotina	Black Cherry	6	5-Poor	Broken Leader	Adventitious Growth
3056	Pinus serotina	Black Cherry	14	3-Fair	Crown Lean	
3057	Pinus serotina	Black Cherry	8	4-Fair/Poor	Lean	20% dead wood
3058	Pinus serotina	Black Cherry	11	4-Fair/Poor	Lean	40% dead wood/Sparse foliage
3059	Pinus serotina	Black Cherry	9.5	5-Poor	Fused Leaders	Dead Leader
3060	Pinus serotina	Black Cherry	8	5-Poor	Unbalanced/Crowded	
3061	Unknown	Unknown	8.4	6-Dead		
3062	Pinus serotina	Black Cherry	6	3-Fair	Lean	
3063	Pinus serotina	Black Cherry	4	4-Fair/Poor	Lean/Crown Lean/Crowded	
3064	Morus alba	White Mulberry	7	5-Poor	Unbalanced/Crowded	Trunk Damage
3065	Pinus serotina	Black Cherry	5	5-Poor	Unbalanced/Crowded	Trunk Damage
3066	Pinus serotina	Black Cherry	5	5-Poor	Unbalanced/Crowded	Trunk Damage
3067	Pinus serotina	Black Cherry	6.4	4-Fair/Poor	Lean/Crown Lean/Crowded	
3068	Pinus serotina	Black Cherry	5	4-Fair/Poor	Lean/Crown Lean/Crowded	
3069	Pinus serotina	Black Cherry	4	4-Fair/Poor	Unbalanced/Crowded	Trunk Scar
3070	Pinus serotina	Black Cherry	6	5-Poor	Strong lean	
3071	Pinus serotina	Black Cherry	12	3-Fair	Lean	40% dead wood/Sparse foliage
3072	Maclura pomifera	Osage Orange	18.14.7.6.4.4	5-Poor	V-shaped joint/Multi Leader/Split Risk	40% dead wood/Trunk Damage
3073	Pinus serotina	Black Cherry	32	4-Fair/Poor	Lean	Trunk Damage/Sparse foliage
3074	Celtis occidentalis	Hackberry	9	3-Fair	Unbalanced/Crowded	
3075	Celtis occidentalis	Hackberry	3	3-Fair	Unbalanced/Crowded	
3076	Pinus serotina	Black Cherry	4	3-Fair	Unbalanced/Crown Lean	
3077	Pinus serotina	Black Cherry	5	4-Fair/Poor	Lean/Crown Lean	
3078	Pinus serotina	Black Cherry	6	4-Fair/Poor	Biased Leaders/joint/Crown Lean/Crowded	
3079	Pinus serotina	Black Cherry	6	3-Fair	Lean	
3080	Pinus serotina	Black Cherry	6	6-Dead		
3081	Pinus serotina	Black Cherry	7	4-Fair/Poor	Lean/Crown Lean	30% dead wood
3082	Pinus serotina	Black Cherry	5	5-Poor	Horizontal Growth	
3083	Pinus serotina	Black Cherry	7	5-Poor	Lean/Crown Lean	Trunk Damage
3084	Pinus serotina	Black Cherry	6	5-Poor	Strong lean	30% dead wood/Dead Leader
3085	Pinus serotina	Black Cherry	25.10.8.4	5-Poor	Unbalanced/Crowded	Dead Leader/Trunk Damage
3086	Pinus serotina	Black Cherry	4	4-Fair/Poor	Unbalanced/Crown Lean	Sparse foliage
3087	Pinus serotina	Black Cherry	4	3-Fair	Crown Lean/Crowded	
3088	Pinus serotina	Black Cherry	4	4-Fair/Poor	Lean/Crown Lean/Crowded	
3089	Ulmus pumila	Siberian Elm	12.9	5-Poor	V-shaped joint/Multi Leader/Split Risk	
3090	Pinus serotina	Black Cherry	7	4-Fair/Poor	Lean/Crown Lean	20% dead wood
3091	Pinus serotina	Black Cherry	11.8	4-Fair/Poor	U-shaped joint/Double Leader/Lean	Sparse foliage
3092	Pinus serotina	Black Cherry	18	4-Fair/Poor	Crown Lean	Trunk Damage
3093	Ulmus pumila	Siberian Elm	7	4-Fair/Poor	Unbalanced/Crowded	
3094	Morus alba	White Mulberry	6	5-Poor	Crown Lean	>50% dead wood/Trunk Damage
3095	Morus alba	White Mulberry	4.3	5-Poor	V-shaped joint/Double Leader/Split Risk	
3096	Ulmus pumila	Siberian Elm	7	3-Fair	Unbalanced/Crowded	
3097	Celtis occidentalis	Hackberry	4	3-Fair	Unbalanced/Crown Lean	
3098	Pinus serotina	Black Cherry	14.6	5-Poor	V-shaped joint/Double Leader/Split Risk/Lean	
3100	Pinus serotina	Black Cherry	6	5-Poor	Unbalanced/Crowded	Dead Leader/Fungus-Stem/Wood rot
3101	Pinus serotina	Black Cherry	15.11	5-Poor	V-shaped joint/Double Leader/Split Risk	Sparse foliage
3102	Pinus serotina	Black Cherry	5	3-Fair	Crown Lean	
3103	Pinus serotina	Black Cherry	5	3-Fair	Unbalanced/Crowded	
3104	Pinus serotina	Black Cherry	11	3-Fair	Unbalanced/Crowded	Dead Leader/Sparse foliage
3105	Pinus serotina	Black Cherry	7.6	5-Poor	V-shaped joint/Double Leader/Split Risk/Crown Lean	
3106	Pinus serotina	Black Cherry	12	4-Fair/Poor	Lean	20% dead wood
3107	Pinus serotina	Black Cherry	11	3-Fair	Unbalanced	
3108	Pinus serotina	Black Cherry	4	4-Fair/Poor	Lean/Crown Lean/Crowded	
3109	Pinus serotina	Black Cherry	18.14	5-Poor	Double Leader/Split Leaders	Dead Leader
3110	Celtis occidentalis	Hackberry	30	5-Fair	Unbalanced/Crowded	Trunk Damage
3111	Pinus serotina	Black Cherry	14	3-Fair	Unbalanced	
3112	Pinus serotina	Black Cherry	18.18	5-Poor	V-shaped joint/Double Leader/Split Risk	
3113	Celtis occidentalis	Hackberry	6	3-Fair	Lean/Crown Lean/Crowded	
3114	Pinus serotina	Black Cherry	9	6-Dead		
3115	Pinus serotina	Black Cherry	16.15	5-Poor	U-shaped joint/Double Leader	Dead Leader/Follow/Cavity
3116	Celtis occidentalis	Hackberry	6	5-Poor	Unbalanced/Crowded	
3117	Celtis occidentalis	Hackberry	9	3-Fair	Crown Lean/Crowded	
3118	Pinus serotina	Black Cherry	11	3-Fair	Unbalanced/Crown Lean	
3119	Pinus serotina	Black Cherry	4	4-Fair/Poor	Lean/Crown Lean/Crowded	
3120	Pinus serotina	Black Cherry	20.10	3-Fair	U-shaped joint/Double Leader/Unbalanced	
3121	Juniperus virginiana	Red Cedar	7.25	3-Fair	Crowded	
3122	Maclura pomifera	Osage Orange	7.7.6.4.4	5-Poor	V-shaped joint/Multi Leader/Split Risk	
3123	Pinus serotina	Black Cherry	8.6	4-Fair/Poor	U-shaped joint/Double Leader	40% dead wood/Vines
3124	Pinus serotina	Black Cherry	3	3-Fair	Lean	
3125	Pinus serotina	Black Cherry	8	4-Fair/Poor	Unbalanced/Crown Lean	40% dead wood
3126	Pinus serotina	Black Cherry	12.35	4-Fair/Poor	Crown Lean/Crowded	
3127	Juniperus virginiana	Red Cedar	12.35	3-Fair	Crowded	
3128	Ulmus pumila	Siberian Elm	22	3-Fair	Unbalanced	
3129	Pinus serotina	Black Cherry	7	5-Poor	Strong lean	Vines
3130	Pinus serotina	Black Cherry	5	5-Poor	Lean/Crown Lean/Crowded	
3131	Pinus serotina	Black Cherry	24.12	5-Poor	U-shaped joint/Double Leader	>50% dead wood/Dead Leader/Trunk Damage
3132	Celtis occidentalis	Hackberry	11	2-Good		
3133	Celtis occidentalis	Hackberry	6	3-Fair	Crown Lean	10% dead wood
3134	Celtis occidentalis	Hackberry	7	3-Fair	Lean/Unbalanced/Crown Lean	
3135	Pinus serotina	Black Cherry	10.9	5-Poor	V-shaped joint/Double Leader/Split Risk/Unbalanced	
3136	Pinus serotina	Black Cherry	20.13	5-Poor	V-shaped joint/Double Leader/Split Risk	
3137	Pinus serotina	Black Cherry	11.8.8.8	5-Poor	V-shaped joint/Double Leader/Split Risk	Dead Leader
3138	Pinus serotina	Black Cherry	8	3-Fair	Unbalanced/Crown Lean	
3139	Ulmus pumila	Siberian Elm	4	2-Good		
3140	Pinus serotina	Black Cherry	12.8.7.5.3	5-Poor	V-shaped joint/Multi Leader/Split Risk	>50% dead wood
3141	Pinus serotina	Black Cherry	4	4-Fair/Poor	Lean/Crown Lean/Crowded	
3142	Pinus serotina	Black Cherry	6	4-Fair/Poor	Lean/Crown Lean	10% dead wood
3143	Pinus serotina	Black Cherry	7	3-Fair	Lean	20% dead wood
3144	Pinus serotina	Black Cherry	8	5-Poor	Strong lean	
3145	Ulmus pumila	White Mulberry	10	3-Fair	Strong lean	
3146	Celtis occidentalis	Hackberry	15	2-Good		
3147	Ulmus pumila	White Mulberry	20	3-Fair	Unbalanced	
3148	Celtis occidentalis	Hackberry	13	3-Fair	Unbalanced	
3149	Pinus serotina	Black Cherry	14.10	5-Poor	V-shaped joint/Double Leader/Split Risk/Strong lean	Wood rot
3150	Acer negundo	Box Elder	6	4-Fair/Poor	Unbalanced/Crown Lean	
3151	Pinus serotina	Black Cherry	11.9	5-Poor	V-shaped joint/Double Leader/Split Risk	Dead Leader
3152	Morus alba	White Mulberry	20	3-Fair	Lean	
3153	Pinus serotina	Black Cherry	13	4-Fair/Poor	Lean/Unbalanced	
3154	Pinus serotina	Black Cherry	15.7	5-Poor	V-shaped joint/Double Leader/Split Risk	Cavity
3155	Acer negundo	Box Elder	14	4-Fair/Poor	Lean/Unbalanced/Crowded	
3156	Acer negundo	Box Elder	5	4-Fair/Poor	Lean/Crown Lean/Crowded	
3157	Acer negundo	Box Elder	11	4-Fair/Poor	Lean/Crown Lean/Crowded	
3158	Pinus serotina	Black Cherry	12	3-Fair	Unbalanced/Crown Lean	
3159	Pinus serotina	Black Cherry	4	4-Fair/Poor	Lean/Crown Lean	Trunk Damage
3160	Pinus serotina	Black Cherry	8.6	5-Poor	V-shaped joint/Double Leader/Split Risk/Lean	
3161	Ulmus americana	American Elm	6	3-Fair	Crown Lean	
3162	Ulmus pumila	Siberian Elm	36	3-Fair	Lean/Crown Lean/Crowded	
3163	Pinus serotina	Black Cherry	13.4	5-Poor	V-shaped joint/Double Leader/Split Risk/Crown Lean	
3164	Morus alba	White Mulberry	21	5-Poor	Double Leader/Fused Leaders	Cavity
3165	Pinus serotina	Black Cherry	11.8	5-Poor	V-shaped joint/Double Leader/Split Risk	
3166	Ulmus americana	American Elm	6.2	5-Poor	V-shaped joint/Double Leader/Split Risk/Crowded	
3167	Pinus serotina	Black Cherry	10	4-Fair/Poor	Lean/Crown Lean/Crowded	
3168	Unknown	Unknown	10.4	6-Dead		
3169	Morus alba	White Mulberry	14	4-Fair/Poor	Lean/Unbalanced	
3170	Pinus serotina	Black Cherry	8	3-Fair	Lean/Unbalanced	
3171	Morus alba	White Mulberry	7.4	5-Poor	V-shaped joint/Double Leader/Split Risk/Crown Lean	
3172	Picea pungens	Colorado Spruce	9.30	3-Fair	Lean	20% dead wood
3173	Pinus serotina	Black Cherry	4	3-Fair	Lean	
3174	Picea pungens	Colorado Spruce	10.30	3-Fair	Lean	20% dead wood
3175	Gleditsia inaequalis	Honey Locust	22	3-Fair	Unbalanced	
3176	Juniperus virginiana	Red Cedar	7.25	3-Fair	Lean	
3177	Juniperus virginiana	Red Cedar	7.25	3-Fair	Lean	20% dead wood
3178	Celtis occidentalis	Hackberry	38	5-Poor	Unbalanced	Wood rot/Cavity/Trunk Damage
3179	Pinus serotina	Black Cherry	17	4-Fair/Poor	Lean	50% dead wood
3180	Pinus serotina	Black Cherry	30	4-Fair/Poor	Lean	Trunk Damage
3181	Pinus serotina	Black Cherry	24	3-Fair	Unbalanced	
3182	Pinus serotina	Black Cherry	8	4-Fair/Poor	Lean/Unbalanced	30% dead wood
3183	Pinus serotina	Black Cherry	9	4-Fair/Poor	Lean	10% dead wood/Trunk Damage
3184	Pinus serotina	Black Cherry	10	6-Dead		
3185	Pinus serotina	Black Cherry	10	4-Fair/Poor	Lean/Unbalanced	
3186	Pinus serotina	Black Cherry	7	3-Fair	Unbalanced	
3187	Celtis occidentalis	Hackberry	24	3-Fair	Broken Limb	Dead Leader
3188	Pinus serotina	Black Cherry	15.14.13.13	5-Poor	V-shaped joint/Multi Leader/Split Risk/Strong lean/Broken Leader	Dead Leader
3189	Celtis occidentalis	Hackberry	5	5-Poor	Lean	Trunk Damage
3190	Pinus serotina	Black Cherry	10.6.3	4-Fair/Poor	V-shaped joint/Multi Leader/Split Risk/Unbalanced	
3191	Pinus serotina	Black Cherry	5	4-Fair/Poor	Lean/Crown Lean/Crowded	
3192	Morus alba	White Mulberry	13.7	5-Poor	V-shaped joint/Double Leader/Split Risk/Unbalanced	
3193	Morus alba	White Mulberry	5	5-Poor	Dead	
3194	Pinus serotina	Black Cherry	13.7	5-Poor	V-shaped joint/Double Leader/Split Risk/Unbalanced	
3195	Fraxinus sp.	Ash	5	6-Dead		
3196	Pinus serotina	Black Cherry	20	4-Fair/Poor	Lean	20% dead wood/Trunk Damage
3197	Pinus serotina	Black Cherry	16	5-Poor	Lean	20% dead wood/Wood rot/Cavity
3198	Pinus serotina	Black Cherry	26	5-Poor	Lean	Fungus-Stem/Wood rot/Cavity
3199	Pinus serotina	Black Cherry	23.22.16.19	5-Poor	V-shaped joint/Multi Leader/Split Risk	Trunk Damage
3200	Pinus serotina	Black Cherry	12.11	5-Poor	V-shaped joint/Double Leader/Split Risk	Trunk Scar
3201	Morus alba	White Mulberry	9.7.6.8.4	5-Poor	V-shaped joint/Double Leader/Split Risk	Cavity

ID	Species	Health	DBH	Height	Notes	Remarks
3202	Pinus serotina	Black Cherry	7	3-Fair	Lean	10% dead wood
3203	Gleditsia nigra	River Birch	10	3-Fair	Lean	
3204	Acer saccharinum	Silver Maple	16.12	5-Poor	V-shaped joint/Double Leader/Split Risk	
3205	Morus alba	White Mulberry	15.10	5-Poor	V-shaped joint/Double Leader/Split Risk	
3206	Morus alba	White Mulberry	19	3-Fair	Unbalanced/Crowded	
3207	Maclura pomifera	Osage Orange	25.19.15	5-Poor	V-shaped joint/Multi Leader/Split Risk	
3208	Salix nigra	Black Willow	9	2-Good	Lean	
3209	Picea pungens	Colorado Spruce	14.45	3-Fair	Lean	10% dead wood
3210	Picea pungens	Colorado Spruce	6.25	3-Fair	Lean	20% dead wood
3211	Picea pungens	Colorado Spruce	10.40	3-Fair	Lean	
3212	Morus alba	White Mulberry	6.4	5-Poor	Crowded	Dead Leader/Adventitious Growth
3213	Pinus serotina	Black Cherry	31	4-Fair/Poor	Crown Lean	30% dead wood/Dead Limbs/Trunk Scar
3214	Morus alba	White Mulberry	8	3-Fair	Crown Lean	
3215	Pinus serotina	Black Cherry	5	5-Poor	Crowded	>50% dead wood/Vines
3216	Pinus strobus	Scots Pine	20.50	4-Fair/Poor	Tall	30% dead wood
3217	Fraxinus sp.	Ash	4	4-Fair/Poor	Unbalanced/Crown Lean/Crowded	
3218	Pinus serotina	Black Cherry	19.50	4-Fair/Poor	Tall	20% dead wood
3219	Picea pungens	Colorado Spruce	5.20	4-Fair/Poor	Tall	30% dead wood
3220	Pinus serotina	Black Cherry	12	4-Fair/Poor	Lean/Crown Lean	20% dead wood
3221	Morus alba	White Mulberry	14.10	5-Poor	V-shaped joint/Double Leader/Split Risk/Lean	
3222	Pinus serotina	Black Cherry	6	4-Fair/Poor	Lean/Unbalanced/Crowded	
3223	Morus alba	White Mulberry	15.3	5-Poor	V-shaped joint/Double Leader/Split Risk	
3224	Gleditsia inaequalis	Honey Locust	11	4-Fair/Poor	Unbalanced/Crown Lean	20% dead wood
3225	Morus alba	White Mulberry	5	4-Fair/Poor	Lean	30% dead wood
3226	Acer sp.	Acer sp.	7	3-Fair	Lean/Unbalanced	
3227	Morus alba	White Mulberry	9.7.6	5-Poor	V-shaped joint/Double Leader/Split Risk	
3228	Tilia americana	American Basswood	12	3-Fair	Lean	
3229	Picea pungens	Colorado Spruce	7.25	2-Good		
3230	Morus alba	White Mulberry	4.3.2.2	5-Poor	V-shaped joint/Multi Leader/Split Risk	
3231	Tilia americana	American Basswood	6.8.3.2.2.2	5-Poor	V-shaped joint/Multi Leader/Split Risk	
3232	Pinus strobus	Scots Pine	11	4-Fair/Poor	Unbalanced/Crowded	30% dead wood
3233						

LANDSCAPE WORK PART 1 - GENERAL

1.1 DESCRIPTION OF WORK

The work shall consist of furnishing, transporting and installing all seeds, plants and other materials required for:

1. The establishment of trees, shrubs, perennial, annual and lawn areas as shown on Landscape Plan;
2. The provision of post-planting management as specified herein;
3. Any remedial operations necessary in conformance with the plans as specified in this document;
4. The design, furnishing and installation of a complete underground sprinkler system; and
5. Permits which may be required.

1.2 QUALITY ASSURANCE

A. Work shall conform to State of Illinois Horticultural Standards and local municipal requirements.

B. Quality Control Procedures:

1. Ship landscape materials with certificates of inspection as required by governmental authorities. Comply with governing regulations applicable to landscape materials.
2. Do not make substitutions. If specified landscape material is not obtainable, submit to Landscape Architect proof of non-availability and proposal for use of equivalent material.
3. Analysis and Standards: Package standard products with manufacturers certified analysis.

C. Insect Control

1. For areas containing standing water less than 3-ft that persist for greater than 7 days, mosquito control may be necessary. Mosquito control should be limited to larvicides applications such as Natulan or Vectolex FG, per the EPA and CDC guidance. Larvicide application should be provided by a qualified professional. Contract the North Shore Mosquito Abatement District for service.

1.3 SUBMITTALS

A. Planting Schedule

Submit three (3) copies of the proposed planting schedule showing dates for each type of planting

B. Maintenance Instruction - Landscape Work

Submit two (2) copies of typewritten instructions recommending procedures to be established by the Owner for the maintenance of landscape work for one full year. Submit prior to expiration of required maintenance periods.

Instructions shall include: watering, fertilizing, spraying, mulching and pruning for plant material and trimming groundcover. Instructions for watering, fertilizing and mowing grass areas shall be provided ten (10) days prior to request for inspection for final acceptance. Landscape Architect shall receive copies of all instructions when issued.

C. Submit two (2) copies of soil test of existing topsoil with recommendations for soil additive requirement to Landscape Architect for review and written approval.

D. Submit two (2) samples of shredded hardwood bark mulch, erosion control blankets, and all other products and materials as specified on plans to Landscape Architect for review and written approval.

E. Nursery packing lists indicating the species and quantities of material installed must be provided to the Owner and/or City upon request.

1.4 JOB CONDITIONS

A. Examine and evaluate grades, soils and water levels. Observe the conditions under which work is to be performed and notify Landscape Architect of unsatisfactory conditions. Do not proceed with the work until unsatisfactory conditions have been corrected in an acceptable manner.

B. Utilities: Review underground utility location maps and plans; notify local utility location service; demonstrate an awareness of utility locations; and certify acceptance of liability for the protection of utilities during course of work. Contractor shall be responsible for any damage to utilities or property.

C. Excavation: When conditions detrimental to plant growth are encountered such as rubble fill, adverse drainage conditions or obstructions, notify Landscape Architect before planting.

1.5 GUARANTEES

A. Guarantee seeded and sodded areas through the specified maintenance period and until final inspection.

B. Guarantee trees, shrubs, groundcover and perennials for a period of one year after date of acceptance against defects including death and unsatisfactory growth, except for defects resulting from neglect by Owner, abuse or damage by others or unusual phenomena or incidents which are beyond Landscape Installer's control.

LANDSCAPE WORK PART 2 - PLANT MATERIALS

2.1 LAWN SOD

Provide strongly rooted sod, not less than two (2) years old and free of weeds and undesirable native grasses. Provide only sod capable of growth and development when planted (viable, not dormant) and in strips not more than 18" wide x 4' long. Provide sod composed of a 5-way blend of Kentucky Bluegrass such as: Midnight, Allure, Viva, Washington, Liberty.

2.2 LAWN SEED MIXTURE

Grass Seed: Provide fresh, clean, new crop seed complying with the tolerance for purity and germination established by the Official Seed Analysts of North America. Provide seed of the grass species, proportions and maximum percentage of weed seed, as specified.

A. Lawn Seed Mixture - 5 lbs. / 1,000 sq. ft.

- 50% Kentucky Bluegrass (98/85)
- 15% Cutter Perennial Ryegrass
- 10% Spartan Hard Fescue
- 10% Edge Perennial Ryegrass
- 10% Express Perennial Ryegrass
- 5% Pennlawn Creeping Red Fescue

B. Temporary Lawn Seed Mixture - 5 lbs. / 1,000 sq. ft.

- 40% Kentucky Bluegrass (98/85)
- 40% Perennial Ryegrass
- 20% Annual Ryegrass

C. Highlands Fescue Seed Mixture - Mixture-7 lbs. / 1,000 sq. ft.

- 25% Discovery Hard Fescue
- 25% Tiffany Chewings Fescue
- 25% Florentine Creeping Red Fescue
- 25% Bighorn Sheeps Fescue

D. Detention Seed Mixture - 7 lbs. / 1000 sq. ft.

- 70% Kentucky 31 Tall Fescue
- 30% Perennial Ryegrass

2.3 GROUNDCOVERS, PERENNIALS AND ANNUALS

Provide plants established and well-rooted in removable containers or integral peat pots and with not less than the minimum number and length of runners required by ANSI Z60.1 for the pot size shown or listed.

2.4 TREES AND SHRUBS

A. Name and Variety: Provide nursery grown plant material true to name and variety.

B. Quality: Provide trees, shrubs and other plants complying with the recommendations and requirements of ANSI Z60.1 "Standard for Nursery Stock" and as further specified.

C. Deciduous Trees: Provide trees of height and caliper listed or shown and with branching configuration recommended by ANSI Z60.1 for type and species required. Provide single stem trees except where special forms are shown or listed. Provide balled and burlapped (B&B) deciduous trees.

D. Deciduous Shrubs: Provide shrubs of the height shown or listed and with not less than the minimum number of canes required by ANSI Z60.1 for the type and height of shrub required. Provide balled and burlapped (B&B) deciduous shrubs.

E. Coniferous Evergreen: Provide evergreens of the sizes shown or listed. Dimensions indicate minimum spread for spreading and semi-spreading type evergreens and height for other types. Provide quality evergreens with well-balanced form complying with requirements for other size relationships to the primary dimension shown. Provide balled and burlapped (B&B) evergreen trees and containerized shrubs.

F. Inspection: All plants shall be subject to inspection and review at the place of growth or upon delivery and conformity to specification requirements as to quality, right of inspection and rejection upon delivery at the site or during the progress of the work for size and condition of balls or roots, diseases, insects and latent defects or injury. Rejected plants shall be removed immediately from the site.

2.5 PLANTING SOIL MIXTURE

Provide planting soil mixture consisting of clean uncompacted topsoil (stockpiled at site) for all planting pits, perennial, annual and groundcover areas. Topsoil shall be conditioned based on any recommendations resulting from the soil test in I.3.C.

2.6 EROSION CONTROL

A. Lawn Seed Areas Erosion Control Blanket: North American Green DS75, or equivalent approved equal.

B. Native Areas Erosion Control Blanket: North American Green S150, or equivalent approved equal.

C. Shoreline Areas: Erosion Control Blanket: North American Green SC150, or equivalent approved equal. To be installed per manufacturer's recommendations three feet above and below NKL.

D. Refer to latest Engineering & Erosion Control Plans for any areas to receive permanent or long-term blanket installation.

E. Hydroseed Mulch: Conweb 2000 wood fiber mulch with tackifier. Other mulches may be used subject to approval of Landscape Architect.

2.7 MULCH

Provide mulch consisting of premium shredded hardwood bark. Provide sample to Landscape Architect for approval prior to ordering materials.

LANDSCAPE WORK PART 3 - EXECUTION

3.1 PLANTING SCHEDULE

At least thirty (30) days prior to the beginning of work in each area, submit a planting schedule for approval by the Landscape Architect.

3.2 PLANTINGS

A. Sodding New Lawns

1. Remove existing grass, vegetation and turf. Dispose of such material legally off-site, do not turn over into soil being prepared for lawns.

2. Till to a depth of not less than 6"; apply soil amendments as needed; remove high areas and fill in depressions; till soil to a homogenous mixture of fine texture, remove lumps, clods, stones over 1" diameter, roots and other extraneous matter. Dispose of such material legally off-site.

3. Sodded areas shall receive an application of commercial fertilizer at the rate of 10 lbs. per 1,000 sq. ft. and shall have an analysis of 16-8-8.

4. Lay sod within 24 hours from time of stripping.

5. Lay sod to form a solid mass with tightly fitted joints. Butt ends and sides of sod strips; do not overlap. Stagger strips to offset joints in adjacent courses. Work from boards to avoid damage to subgrade or sod. Tamp or roll lightly to ensure contact with subgrade. Work sifted soil into minor cracks between pieces of sod; remove excess to avoid smothering of adjacent grass.

6. Water sod thoroughly with a fine spray immediately after planting.

B. Seeding New Lawns

1. Remove existing grass, vegetation and turf. Dispose of such material legally off-site. Do not turn over into soil being prepared for lawns.

2. Till to a depth of not less than 6"; apply soil amendments; remove high areas and fill in depressions; till soil to a homogenous mixture of fine texture, remove lumps, clods, stones over 1" diameter, roots and other extraneous matter. Dispose of such material legally off-site.

3. Seeded lawn areas shall receive an application of commercial fertilizer at the rate of 5 lbs. per 1,000 sq. ft. and shall be 6-24-24. Fertilizer shall be uniformly spread and mixed into the soil to a depth of 1" inches.

4. Do not use wet seed or seed which is moldy or otherwise damaged in transit or storage.

5. Sow seed using a spreader or seeding machine. Do not seed when wind velocity exceeds five (5) miles per hour. Distribute seed evenly over entire area by sowing equal quantity in two directions at right angles to each other.

6. Sow not less than specified rate.

7. Rake lawn seed lightly into top 1" of soil, roll lightly and water with a fine spray.

8. After the seeding operation is completed, spray a wood fiber mulch (Conweb 2000 with tackifier or approved equal) over the entire grassed area at the rate of 2,000 lbs. per acre. Use a mechanical spray unit to insure uniform coverage. Exercise care to protect buildings, automobiles and people during the application of the mulch.

9. DO NOT MOW HIGHLANDS FESCUE SEED MIXTURE.

C. Groundcover and Perennial Beds

Groundcover, perennials, and annuals shall be planted in continuous beds of planting soil mixture a minimum of 8" deep. Install per spacing indicated on plan.

D. Trees and Shrubs

1. Set balled and burlapped (B&B) stock plumb and in center of pit or trench with top of ball at an elevation that will keep the root flare exposed upon backfill and mulching. Remove burlap from top and sides of balls; retain on bottoms. When set, place additional topsoil backfill around base and sides of ball and work each layer to settle backfill and eliminate voids and air pockets. When excavation is approximately 2/3 full, water thoroughly before placing remainder of backfill. Repeat watering until no more is absorbed. Water again after placing final layer of backfill.

2. Dish top of backfill to allow for mulching. Provide additional backfill berm around edge of excavations to form shallow saucer to collect water.

3. Mulch pits, trenches and planted areas. Provide not less than 3" thickness of mulch and work into top of backfill and finish level with adjacent finish grades. Maintain exposed root flare at all times.

4. Prune only injured or dead branches from flowering trees, if any. Protect central leader of tree during shipping and pruning operations. Prune shrubs to retain natural character in accordance with standard horticultural practices.

5. Remove and replace excessively pruned or ill-formed stock resulting from improper pruning.

6. The Contractor shall be wholly responsible for assuring that all trees are planted in a vertical and plumb position and remain so throughout the life of this contract and guarantee period. Trees may or may not be staked and guyed depending upon the individual preference of the Contractor; however, any bracing procedure(s) must be approved by the Owner prior to its installation.

3.3 INITIAL MAINTENANCE

A. Begin maintenance immediately after planting, continuing until final acceptance. A minimum of thirty (30) days.

B. Maintain planted and seeded areas by watering, rolling/grading, replanting and implementing erosion control as required to establish vegetation free of eroded or bare areas.

C. Highlands Fescue and Native Planting areas are to be mowed only once per spring during the initial three year establishment period.

3.4 CLEAN UP AND PROTECTION

A. During landscape work, store materials and equipment where directed. Keep pavements clean and work areas and adjoining areas in an orderly condition.

B. Protect landscape work and materials from damage due to landscape operations, operations by other trades and trespassers. Maintain protection during installation and maintenance periods. Treat, repair or replace damaged landscape work as directed by Landscape Architect.

3.5 INSPECTION AND ACCEPTANCE

A. The Landscape Architect reserves the right to inspect seeds, plants, trees and shrubs either at place of growth or at site before planting for compliance with requirements for name, variety, size, quantity, quality and mix proportion.

B. Supply written affidavit certifying composition of seed mixtures and integrity of plant materials with respect to species, variety and source.

C. Notify the Landscape Architect within five (5) days after completing initial and/or supplemental plantings in each area.

D. When the landscape work is completed, including maintenance, the Landscape Architect will, upon request, make a final inspection to determine acceptability. After final acceptance, the Owner will be responsible for maintenance.



GARY R. WEBER
ASSOCIATES, INC.
LAND PLANNING
ECOLOGICAL CONSULTING
LANDSCAPE ARCHITECTURE
402 W. LIBERTY DRIVE
WHEATON, ILLINOIS 60187
PHONE: 630-668-7197
www.grwainc.com

CLIENT



1750 E. GOLF ROAD, SUITE 925
SCHLAUBURG, IL 60173

CIVIL ENGINEER

MANHARD CONSULTING
333 E. BUTTERFIELD RD. STE. 600
LOMBARD, IL 60148

PRAIRIE LANDING

JOLIET, ILLINOIS

LANDSCAPE SPECIFICATIONS

11.14.2024
REVISIONS

DATE 11.01.2024
PROJECT NO. DR23154
DRAWN SMR
CHECKED DHS
SHEET NO.



10 OF 10