

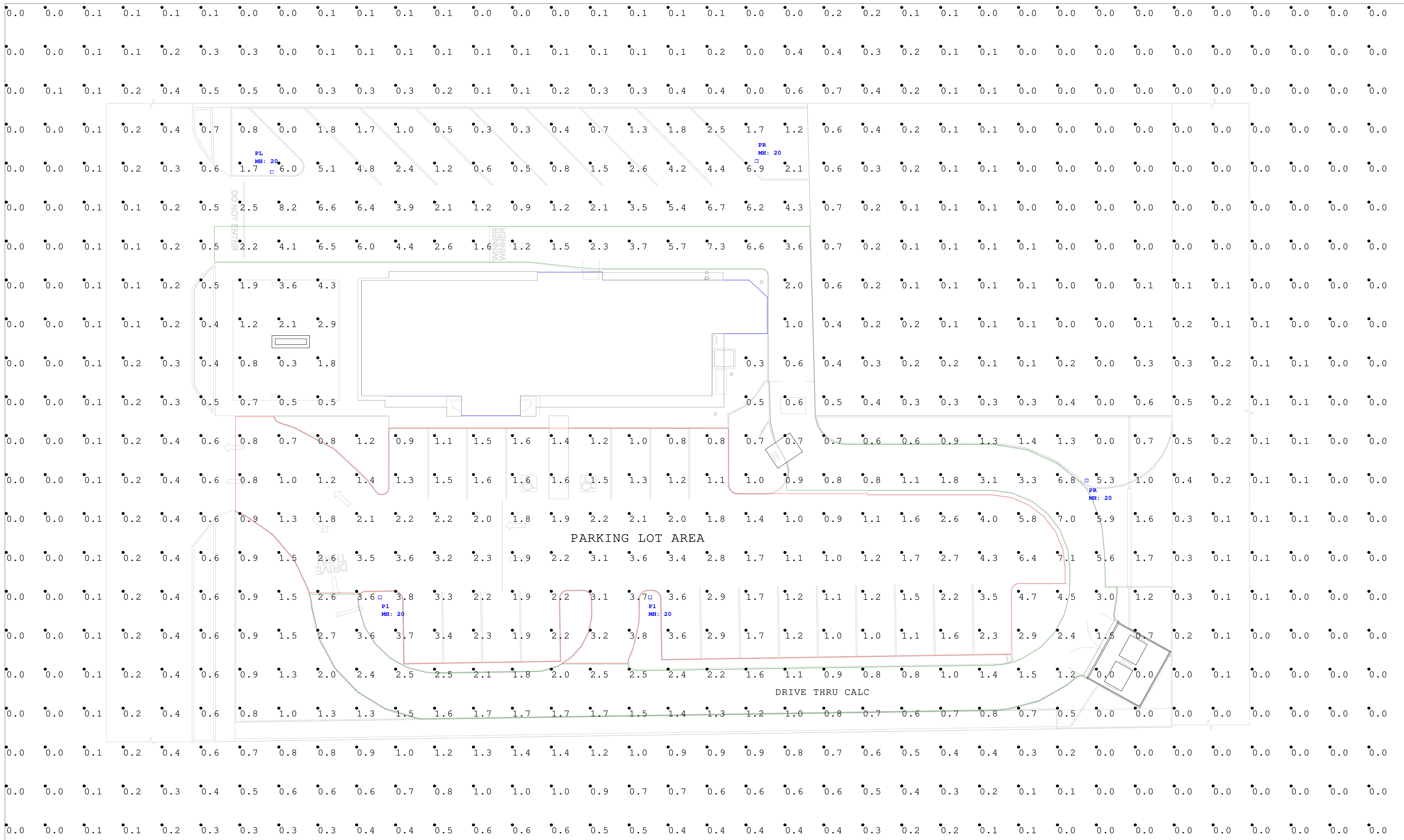




Photometric calculations are being provided to the recipient per the following disclaimer. This light level analysis is an estimate only, and is based on standard interior reflectance values of 0.8 ceilings, 0.5 walls, and 0.2 floors, unless otherwise specified. Any variance from reflectance values, obstructions, light loss factors or dimensional data will affect the actual light levels obtained. This analysis is a mathematical model and can only be as accurate as is permitted by the third party software and the IES files provided by our manufacturers.

Calculation by:  
**Josh Burge**  
 Email:  
 applications@amirep.com

#	DATE	COMMENTS	
			REVISIONS



Luminaire Schedule							
Symbol	Qty	Tag	Manufacturer	Description	Luminaire Lumens	Luminaire Watts	LLF
	2	P1	LSI	MRM-LED-18L-SIL-5W-40-80CRI	17328	135	0.900
	1	PL	LSI	MRM-LED-18L-SIL-LC-40-80CRI	17401	135	0.900
	2	PR	LSI	MRM-LED-18L-SIL-RC-40-80CRI	17400	135	0.900

Calculation Summary							
Label	CalcType	Units	Avg	Max	Min	Avg/Min	Max/Min
FULL AREA_Planar	Illuminance	Fc	0.70	8.2	0.0	N.A.	N.A.
DRIVE THRU CALC	Illuminance	Fc	2.37	7.3	0.6	3.95	12.17
PARKING LOT AREA	Illuminance	Fc	2.13	7.1	0.7	3.04	10.14

Calculation For:

**KP + J ARCHITECTS & ENGINEERS**

Project:

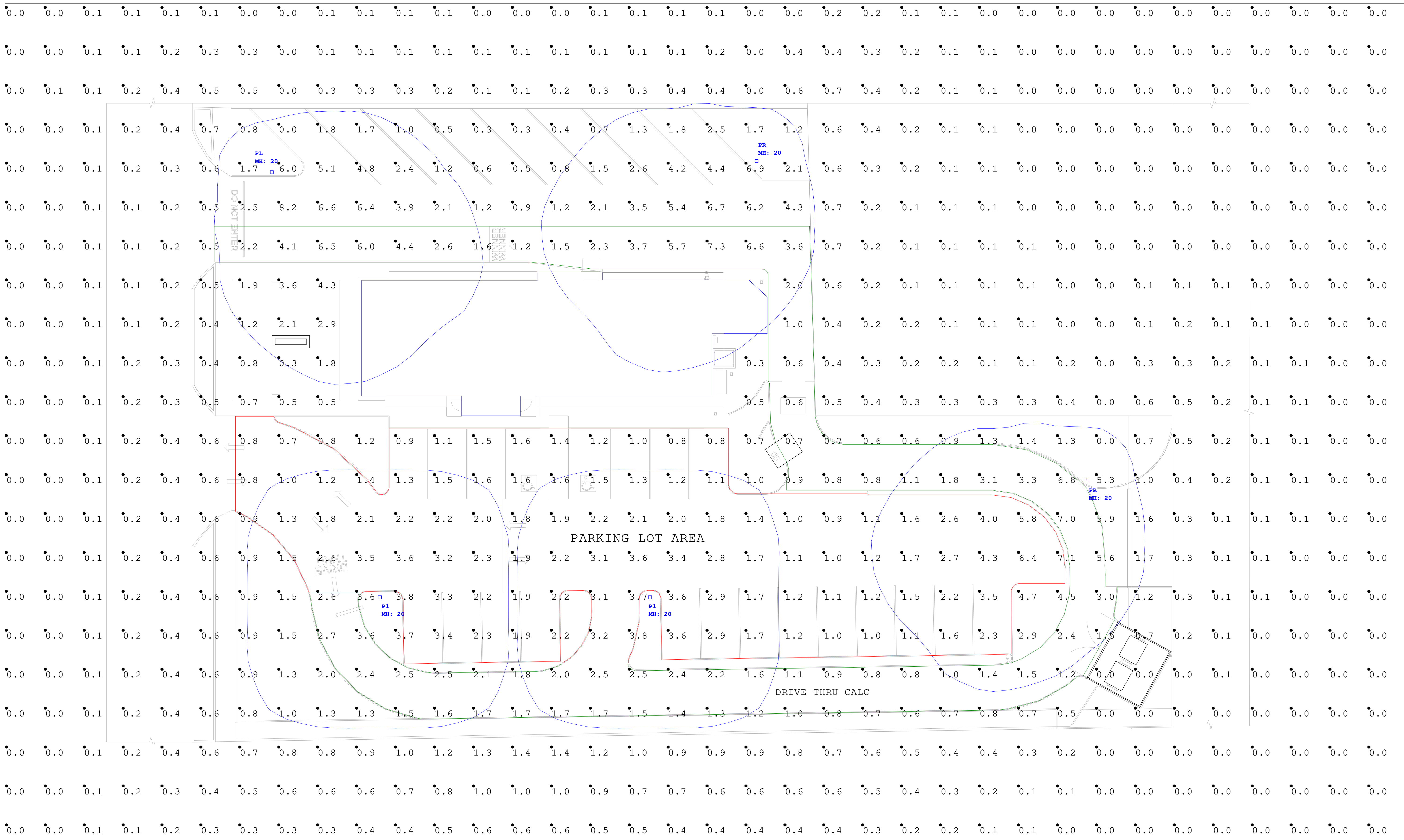
**ZAXBYS - 110 S LARKIN AVE. JOLIET, IL**



Photometric calculations are being provided to the recipient per the following disclaimer. This light level analysis is an estimate only, and is based on standard interior reflectance values of 0.8 ceilings, 0.5 walls, and 0.2 floors, unless otherwise specified. Any variance from reflectance values, obstructions, light loss factors or dimensional data will affect the actual light levels obtained. This analysis is a mathematical model and can only be as accurate as is permitted by the third party software and the IES files provided by our manufacturers.

Calculation by:  
 Josh Burge  
 Email:  
 applications@amirep.com

#	DATE	COMMENTS	
			REVISIONS



Luminaire Schedule							
Symbol	Qty	Tag	Manufacturer	Description	Luminaire Lumens	Luminaire Watts	LLF
	2	P1	LSI	MRM-LED-18L-SIL-5W-40-80CRI	17328	135	0.900
	1	PL	LSI	MRM-LED-18L-SIL-LC-40-80CRI	17401	135	0.900
	2	PR	LSI	MRM-LED-18L-SIL-RC-40-80CRI	17400	135	0.900

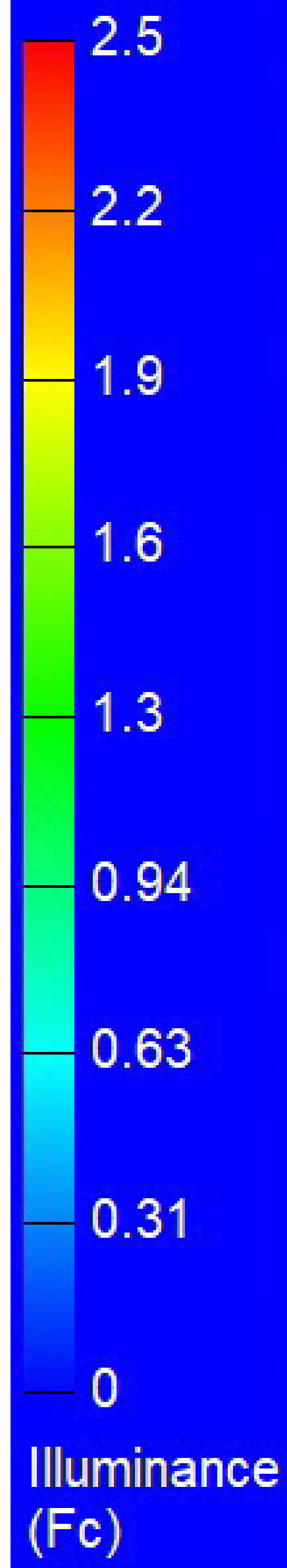
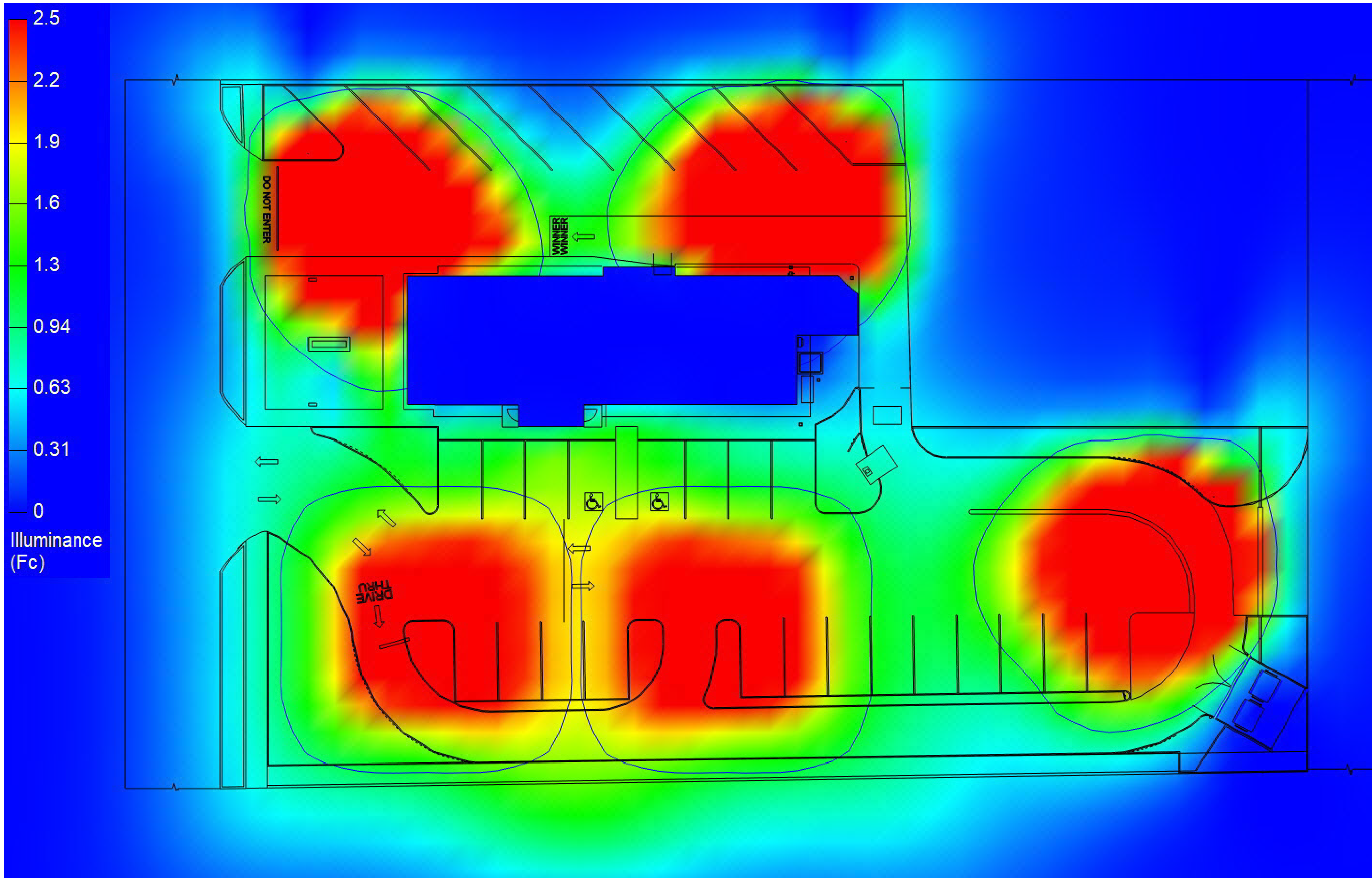
Calculation Summary							
Label	CalcType	Units	Avg	Max	Min	Avg/Min	Max/Min
FULL AREA_Planar	Illuminance	Fc	0.70	8.2	0.0	N.A.	N.A.
DRIVE THRU CALC	Illuminance	Fc	2.37	7.3	0.6	3.95	12.17
PARKING LOT AREA	Illuminance	Fc	2.13	7.1	0.7	3.04	10.14

Calculation For:

**KP + J ARCHITECTS & ENGINEERS**

Project:

**ZAXBYS - 110 S LARKIN AVE. JOLIET, IL**



Luminaire Schedule							
Symbol	Qty	Tag	Manufacturer	Description	Luminaire Lumens	Luminaire Watts	LLF
	2	P1	LSI	MRM-LED-18L-SIL-5W-40-80CRI	17328	135	0.900
	1	PL	LSI	MRM-LED-18L-SIL-LC-40-80CRI	17401	135	0.900
	2	PR	LSI	MRM-LED-18L-SIL-RC-40-80CRI	17400	135	0.900

Calculation Summary							
Label	CalcType	Units	Avg	Max	Min	Avg/Min	Max/Min
FULL AREA_Planar	Illuminance	Fc	0.70	8.2	0.0	N.A.	N.A.
DRIVE THRU CALC	Illuminance	Fc	2.37	7.3	0.6	3.95	12.17
PARKING LOT AREA	Illuminance	Fc	2.13	7.1	0.7	3.04	10.14



Photometric calculations are being provided to the recipient per the following disclaimers. This light level analysis is an estimate only, and is based on standard interior reflectance values of 0.8 ceilings, 0.5 walls, and 0.2 floors, unless otherwise specified. Any variance from reflectance values, obstructions, light loss factors or dimensional data will affect the actual light levels obtained. This analysis is a mathematical model and can only be as accurate as is permitted by the third party software and the IES files provided by our manufacturers.

Calculation by:  
 Josh Burge  
 Email:  
 applications@amirep.com

REVISIONS		#	DATE	COMMENTS

Calculation For:  
**KP + J ARCHITECTS & ENGINEERS**  
 Project:  
**ZAXBYS - 110 S LARKIN AVE. JOLIET, IL**