

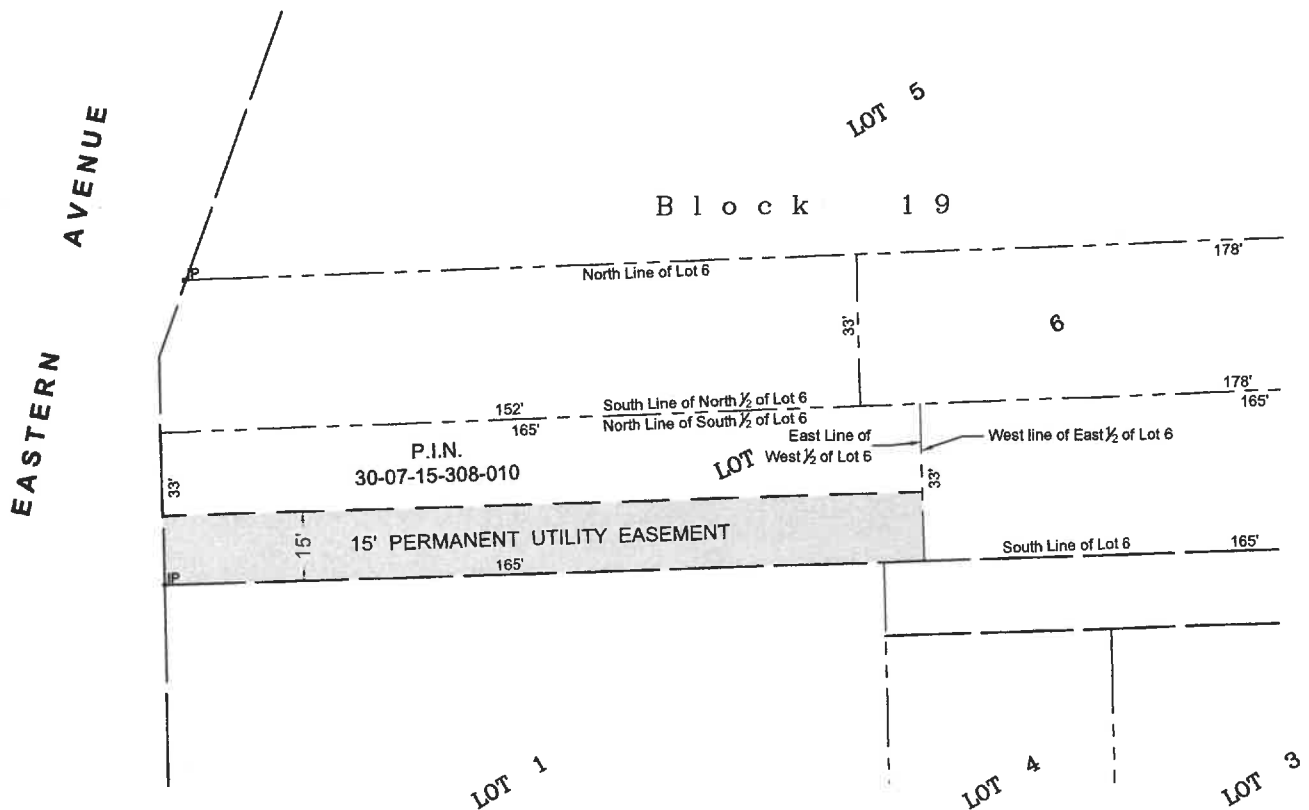
EASEMENT EXHIBIT

0 40
Scale 1" = 40'



15' PERMANENT UTILITY EASEMENT

THE SOUTH 15 FEET OF THE WEST HALF OF THE SOUTH 33 FEET OF LOT 6 IN BLOCK 19 OF S.W. BOWEN'S SUBDIVISION OF LOT 2 IN BLOCK 31 IN CANAL TRUSTEE'S SUBDIVISION IN THE WEST HALF OF THE SOUTHWEST QUARTER OF SECTION 15, TOWNSHIP 35 NORTH, RANGE 10, EAST OF THE THIRD PRINCIPAL MERIDIAN, IN WILL COUNTY, ILLINOIS.



BAXTER & WOODMAN
Consulting Engineers

8678 RIDGEFIELD ROAD • CRYSTAL LAKE, IL 60012
PHONE: 815-459-1260 • FAX: 815-455-0450