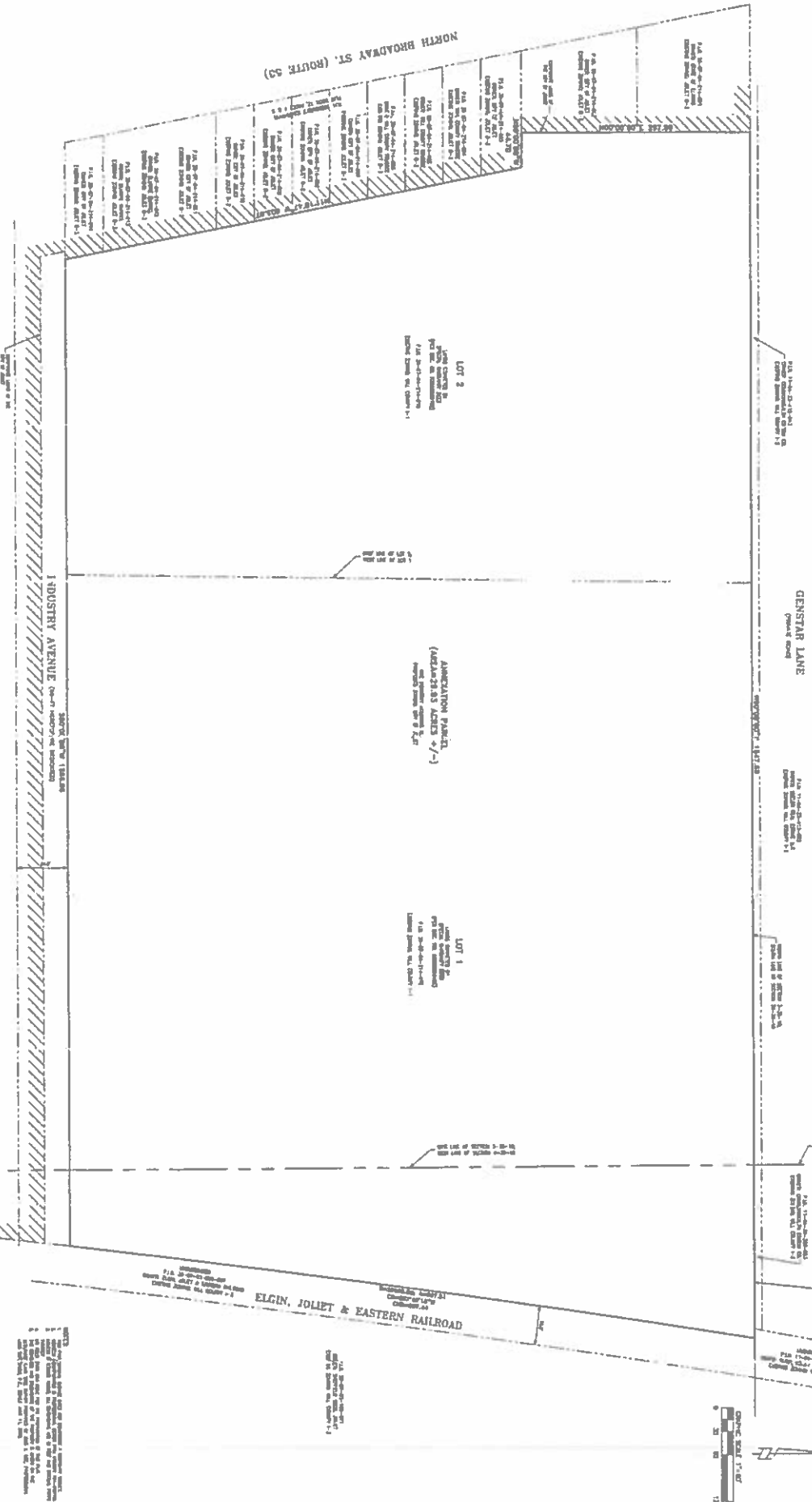


PLAT OF ANNEXATION
 (CITY OF JOUET)

PLAT OF ANNEXATION

LOTS 1 AND 2 (EXCEPT THE SOUTH 25 FEET THEREOF UNDER THE STREET IMPROVEMENTS) IN THE COUNTY OF ST. LOUIS, MISSOURI, BEING PART OF THE ANNEXED CITY OF JOUET, MISSOURI, BEING PART OF THE SECTION 4-24-10, TOWNSHIP 24 NORTH, RANGE 10 WEST, MO. ZONING DISTRICT NO. 22224.1, IN THE COUNTY OF ST. LOUIS, MISSOURI.



PLAT NO. 20-07-04-214-015
 CITY OF JOUET, MISSOURI

DATE: 1/25/2023

DRAWN BY: B. [Signature]
 CHECKED BY: CUP

DATE BY: [Signature]

GEOTECH INC.
 CONSULTING ENGINEERS - LAND SURVEYORS
 1307 CEDARWOOD DRIVE, CHEST HILL, ELKHORN 63043, 615/735-1010

PART OF THE NE 1/4 OF SECTION 4-24-10

PLAT OF ANNEXATION (CITY OF JOUET)
 DRAWN BY: B. [Signature]
 CHECKED BY: CUP

DATE BY	REVISION