

SITE LEGEND

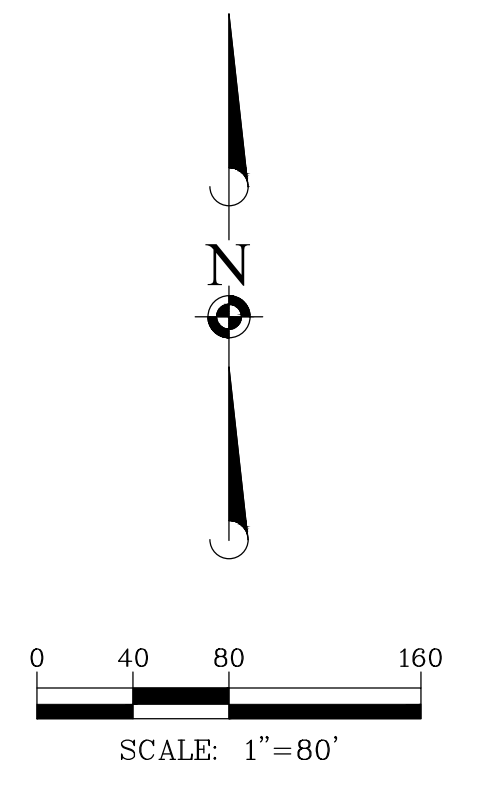
- EXISTING WETLAND LIMITS
- EXISTING FLOODPLAIN LIMITS BASED ON FEMA
- EXISTING FLOODPLAIN LIMITS BASED ON H&H ANALYSIS
- ORDINARY HIGH WATER MARK
- 25 FT ORDINARY HIGH WATER MARK
- 100 FT PROTECTION AREA LIMIT OF ORDINARY HIGH WATER LIMITS
- 25 FT PROTECTION AREA LIMIT OF WETLAND LIMITS
- TURN NUMBER
- MARSHAL POST
- GUARDRAIL
- TIRE BARRIERS

PAVEMENT LEGEND

- STANDARD DUTY ASPHALT PAVEMENT
3 3/4" BITUMINOUS SURFACE COURSE, HOT-MIX ASPHALT, MIX D, N80
2" BITUMINOUS BINDER COURSE, HOT-MIX ASPHALT, IL-19, N70
10" AGGREGATE BASE COURSE, TYPE B
*FINAL ASPHALT MIX DESIGN TO BE PROVIDED TO AUTOBAHN COUNTRY CLUB FOR REVIEW
- MILL AND OVERLAY
3/4" SURFACE REMOVAL
1 1/2" BITUMINOUS SURFACE COURSE
- BEVELED APEX CURBS
REFER TO DETAIL ON SHEET C702

PAVEMENT MARKING LEGEND

- 6" SOLID WHITE STRIPE



DATE	REVISIONS	BY	CHK
05/04/2026	REVISED PER CITY REVIEW	KTG	KTG
03/30/2026	REVISED PER INTERNAL REVIEW	KTG	KTG

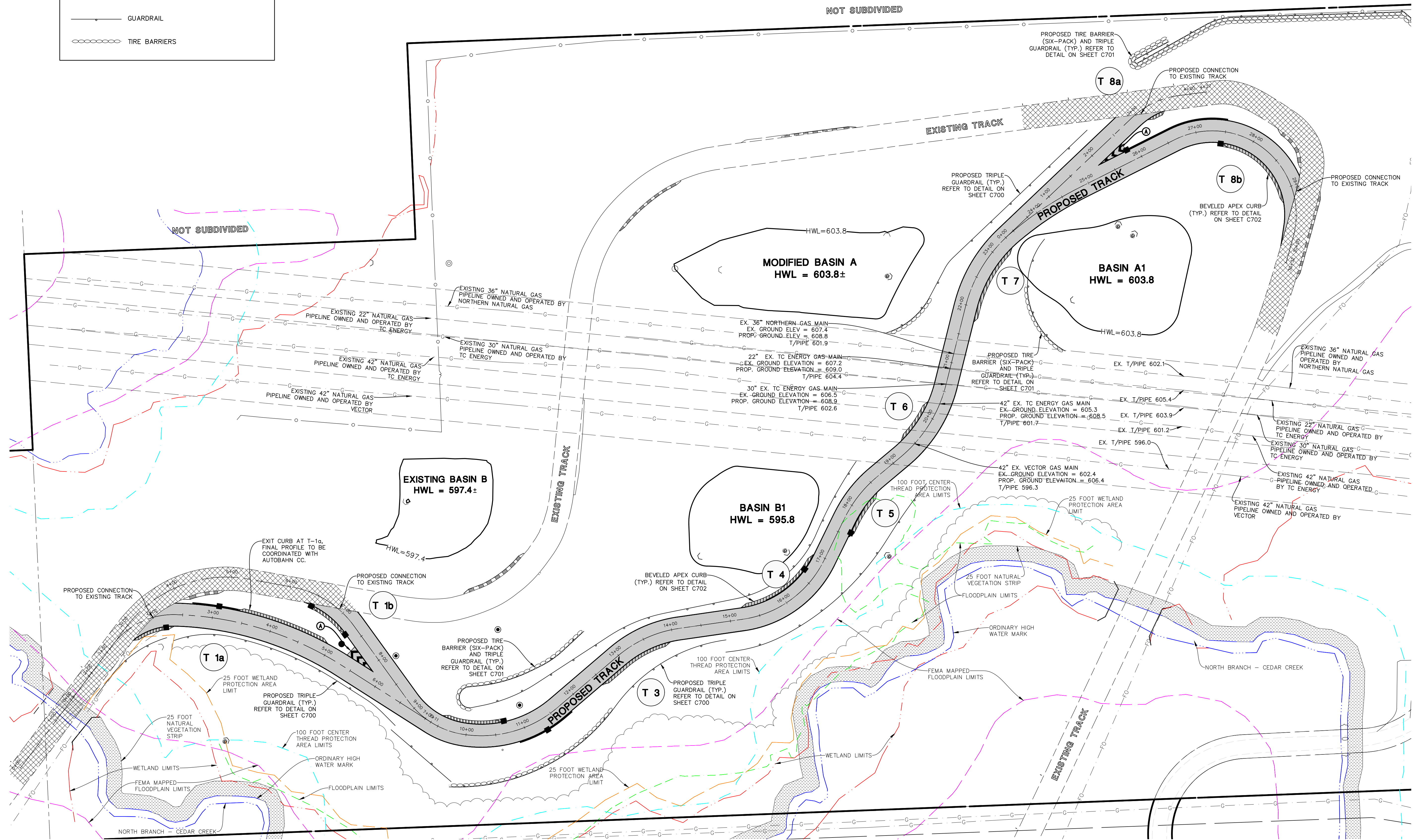
ATWELL
 866.850.4200 www.atwell.com
 333 East Butterfield Road, Suite 600
 Lombard, IL 60148
 ph:630.691.8500

AUTOBAHN - NORTH TRACK ADDITION
 CITY OF JOLIET, ILLINOIS
 OVERALL SITE PLAN

PROJ MGR: MTM
 PROJ ASSOC: CLH
 DRAWN BY: KTG
 DATE: 02/18/2026
 SCALE: 1"=80'

SHEET
C200
 AUT.JOL10

©2026 ATWELL LLC. ALL RIGHTS RESERVED.



02/18/2026 13:55 Day Name: P:\Auto\10\Draw\Site\03_Site_Plan.dwg Updated By: kktg

PENDING APPROVAL - NOT FOR CONSTRUCTION