

GENERAL SITE NOTES:

1. CONTRACTOR WILL NOT START CONSTRUCTION UNTIL AFTER THEY HAVE RECEIVED THE PRE-CON PACKAGE AND HAVE A PRE-CON WALK WITH THE PROJECT MANAGER.
2. CONTRACTOR TO HIRE PUBLIC (811) AND PRIVATE LOCATING SERVICE IN ORDER TO LOCATE AND PROTECT ALL SURFACE UTILITIES. DO NOT SCALE OFF THESE PLANS FOR ANY BELOW GRADE UTILITIES
3. CONTRACTOR SHALL VERIFY ALL EXISTING BURIED AND OVERHEAD UTILITIES PRIOR TO EXCAVATION. CONTRACTOR SHALL REPAIR ALL DAMAGED UTILITIES AT HIS OWN COST AND COORDINATE ANY REPAIRS WITH RESPECTIVE UTILITY COMPANY.
4. CONTRACTOR TO VERIFY ALL HEIGHTS AND AZIMUTHS IN FIELD PRIOR TO CONSTRUCTION. CONTRACTOR SHALL NOTIFY T-MOBILE AND ENGINEERING FIRM OF ANY DISCREPANCIES BEFORE PROCEEDING.
5. CONTRACTOR SHALL RESTORE AND REPAIR ANY DAMAGED AREAS CAUSED BY CONSTRUCTION.



OVERALL SITE PLAN

SCALE: 1" = 70'-0"

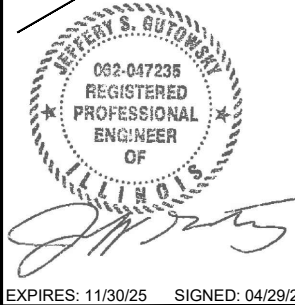
1



GARNSEY PARK RL  
CH75294D  
1300 N. KELLY AVENUE  
JOLIET, IL 60435



WT GROUP  
Engineering with Precision, Pace and Passion  
2875 Prichard Avenue | Hoffman Estates, IL 60192  
T: 224.293.8333 | F: 224.293.8444  
wtengineering.com  
IL License No. 184.007970-0015 Expires 04/30/2025  
© COPYRIGHT 2024 THE WT GROUP, LLC



REVISIONS			
REV.	ISSUED FOR	DATE	BY
A	FOR CLIENT REVIEW	04/23/24	ATK
0	FINAL	04/29/24	TRK

AQUATIC \ DESIGN & PROGRAM MANAGEMENT  
CIVIL \ TELECOMMUNICATION \ MECHANICAL  
PLUMBING \ ELECTRICAL \ LAND SURVEYING  
ACCESSIBILITY CONSULTING \ STRUCTURAL



CHECK: JKR  
DRAWN: ATK  
JOB: T2400215

LEGEND

- EXISTING EQUIPMENT
- NEW EQUIPMENT
- REMOVED EQUIPMENT
- RELOCATED EQUIPMENT

IMPORTANT SITE NOTES:

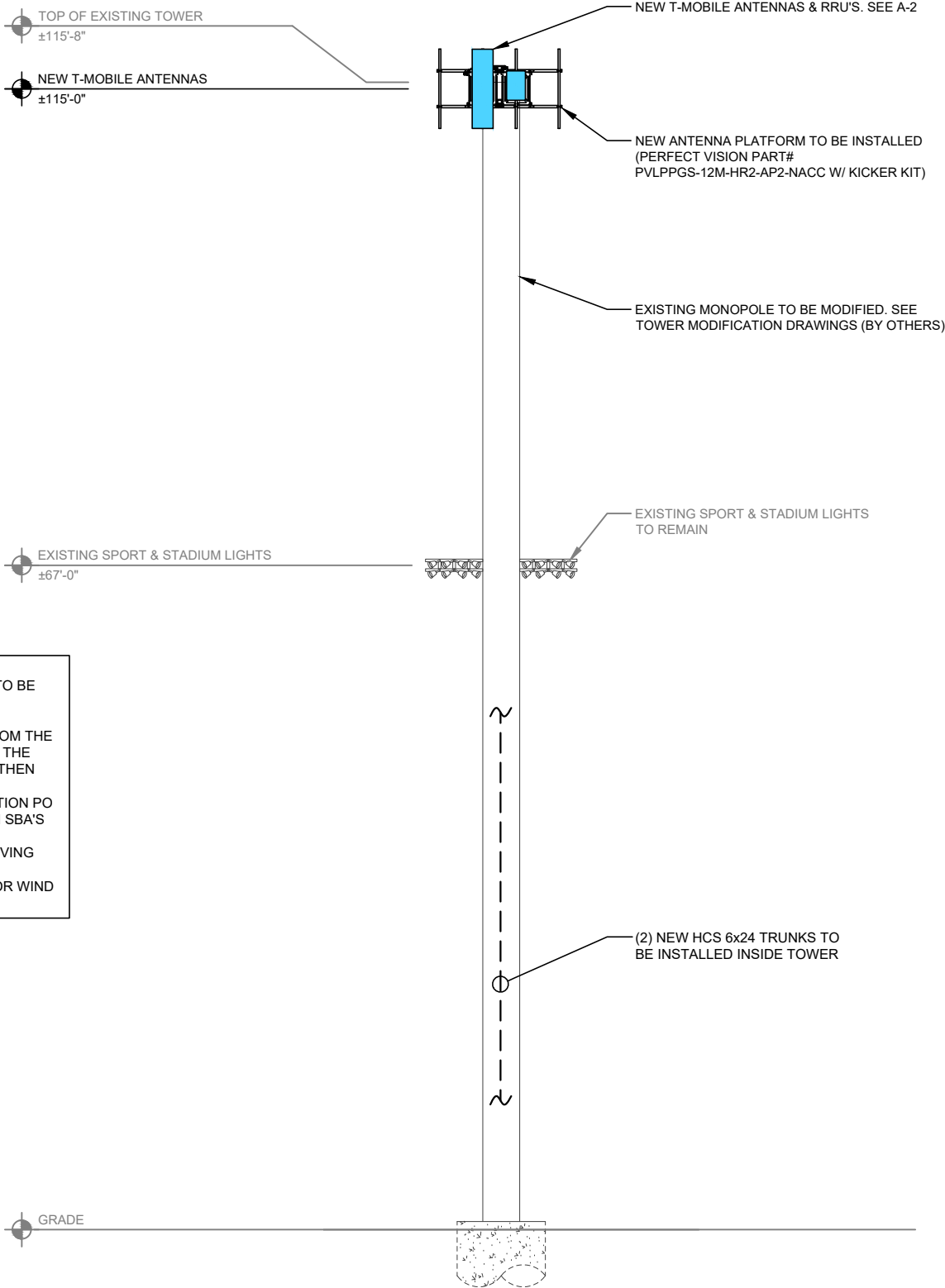
1. CONTRACTOR SHALL BE RESPONSIBLE FOR VERIFYING FINAL RF CONFIGURATION AND NOTIFY T-MOBILE AND ENGINEERING FIRM WITH ANY DISCREPANCIES.
2. CONTRACTOR SHALL VERIFY ALL FINAL CONNECTION LOCATIONS WITH T-MOBILE ENGINEER, RF ENGINEER, AND NET-OPS PRIOR TO INSTALLATION.
3. CONTRACTOR TO USE PROPER TORQUE WRENCH WHEN INSTALLING AND TIGHTENING CONNECTORS TO INSURE PROPER FIT.
4. CONTRACTOR TO ARRANGE NEW MODULES/EQUIPMENT TO AVOID INTERFERING WITH SAFETY CLIMB.

- NOTE:  
PER SBA COMMUNICATIONS CORPORATION, THE FOLLOWING ARE ISSUES THAT NEED TO BE ADDRESSED REGARDING THE T-MOBILE EQUIPMENT BEING RELOCATED DURING THE REPLACEMENT OF THE TOP TOWER SECTION:
- T-MOBILE WILL BE RESPONSIBLE FOR REMOVING THEIR EXISTING EQUIPMENT FROM THE CONCEALMENT CANISTER AND MOVING IT BELOW THE FLANGE AT ±85'-0" DURING THE TOWER MODIFICATION. IF A LOWER ELEVATION DOES NOT WORK FOR T-MOBILE, THEN THEY WILL NEED TO PROCURE A COW.

ONCE THE MODIFICATION DESIGNS ARE COMPLETED, BID'S RECEIVED, MODIFICATION PO RECEIVED, AND THE AMD EXECUTED; T-MOBILE WILL NEED TO COORDINATE WITH SBA'S GENERAL CONTRACTOR TO HAVE THE EXISTING EQUIPMENT REMOVED.

ONCE THE NEW SECTION IS INSTALLED, T-MOBILE WILL BE RESPONSIBLE FOR MOVING THEIR EQUIPMENT TO THEIR NEW RAD CENTER.

CARRIER IS RESPONSIBLE FOR EQUIPMENT FIT AND ANY DAMAGE TO SHROUDS OR WIND BANDS DURING CONSTRUCTION.



NOTE:  
A FAILING STRUCTURAL ANALYSIS OF THE EXISTING TOWER HAS BEEN COMPLETED BY TOWER ENGINEERING SOLUTIONS ON MARCH 12, 2024. CONTRACTOR TO VERIFY EXISTING TOWER IS MODIFIED PRIOR TO CONSTRUCTION. PER THE STRUCTURAL ANALYSIS IT IS RECOMMENDED TO REPLACE EXISTING CANISTER WITH 16" X 0.375" X 19'-4" NEW POLE SECTION FROM 95'-8" TO 115'-0" AND REINFORCE THE FLANGE CONNECTION AT 35.25'. THE REINFORCED TOWER SHALL BE ANALYZED PRIOR TO THE INSTALLATION OF THIS DESIGN.

NOTE:  
WT'S SCOPE OF WORK DOES NOT INCLUDE A STRUCTURAL ANALYSIS OF THIS ANTENNA MOUNT. NEW ANTENNAS AND EQUIPMENT SHOWN ON THIS PLAN HAVE NOT BEEN EVALUATED TO VERIFY THE MOUNT HAS THE CAPACITY TO ADEQUATELY SUPPORT THESE ANTENNAS. PRIOR TO ANY ANTENNA OR EQUIPMENT INSTALLATION, A STRUCTURAL EVALUATION OF THE MOUNT, INCLUDING ALL ANTENNA MOUNTING SYSTEMS & HARDWARE SHALL BE PERFORMED.

NOTE:  
ANTENNA CENTERLINE'S VERTICAL OFFSET FROM PLATFORM DECK OR HORIZONTAL CENTER OF SECTOR FRAME SHALL NOT EXCEED 6".

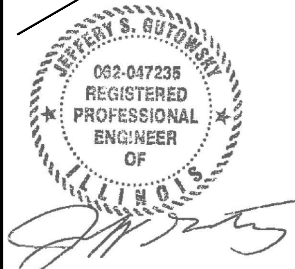
TOWER ELEVATION

SCALE: 1/16" = 1'-0"

1



GARNSEY PARK RL  
CH75294D  
1300 N. KELLY AVENUE  
JOLIET, IL 60435



EXPIRES: 11/30/25    SIGNED: 04/29/24

REVISIONS			
REV.	ISSUED FOR	DATE	BY
A	FOR CLIENT REVIEW	04/23/24	ATK
0	FINAL	04/29/24	TRK

AQUATIC \ DESIGN & PROGRAM MANAGEMENT  
CIVIL \ TELECOMMUNICATION \ MECHANICAL  
PLUMBING \ ELECTRICAL \ LAND SURVEYING  
ACCESSIBILITY CONSULTING \ STRUCTURAL



CHECK: JKR

DRAWN: ATK

JOB: T2400215

A-1

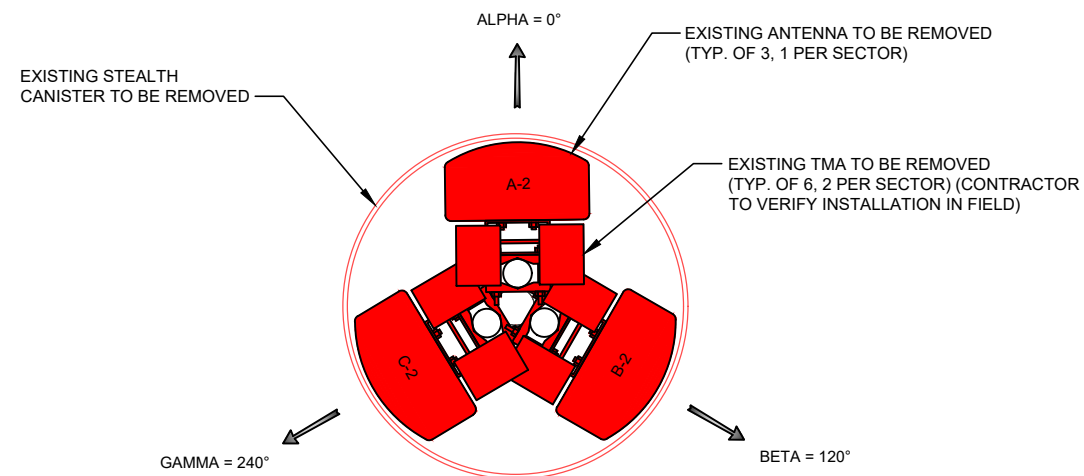
TOWER ELEVATION

T Mobile

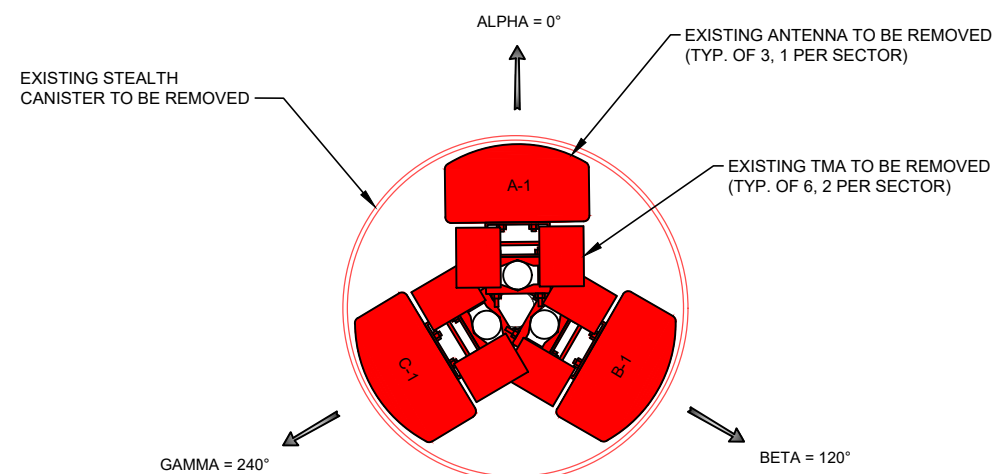
WT Group  
Engineering • Design • Consulting

WT GROUP

Engineering with Precision, Pace and Passion  
2875 Pratum Avenue | Hoffman Estates, IL 60192  
T: 224.293.6333 | F: 224.293.6444  
wengineering.com  
IL License No: 184.007970-0015 Expires 04/30/2025  
© COPYRIGHT 2024 THE W-T GROUP, LLC



111'-6" ELEVATION



**104'-0" ELEVATION**







## EXISTING ANTENNA PLANS

SCALE: NONE

1

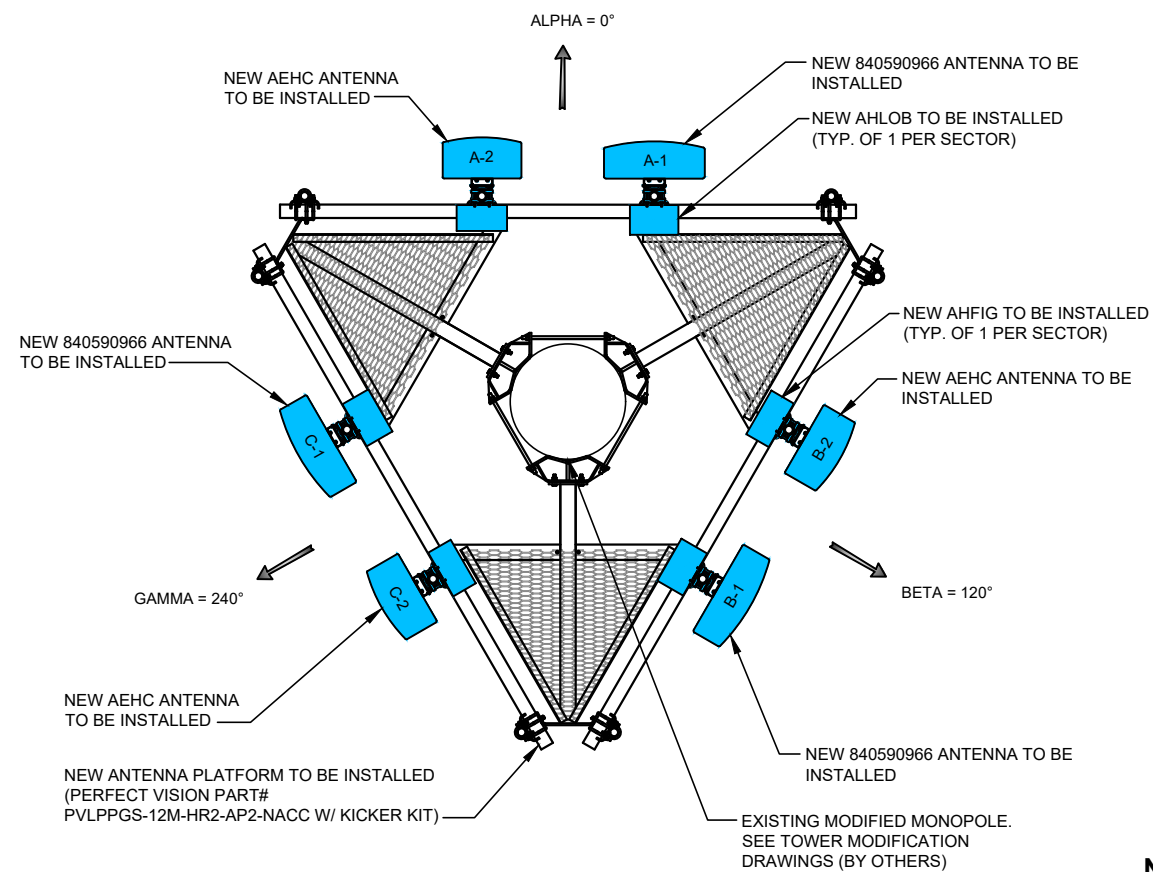
### LEGEND

- |   |                     |
|---|---------------------|
|  | EXISTING EQUIPMENT  |
|  | NEW EQUIPMENT       |
|  | REMOVED EQUIPMENT   |
|  | RELOCATED EQUIPMENT |

NOTE:  
A FAILING STRUCTURAL ANALYSIS OF THE EXISTING TOWER  
HAS BEEN COMPLETED BY TOWER ENGINEERING  
SOLUTIONS ON MARCH 12, 2024. CONTRACTOR TO VERIFY  
EXISTING TOWER IS MODIFIED PRIOR TO CONSTRUCTION.  
PER THE STRUCTURAL ANALYSIS IT IS RECOMMENDED TO  
REPLACE EXISTING CANISTER WITH 16" X 0.375" X 19'-4" NEW  
POLE SECTION FROM 95'-8" TO 115'-0" AND REINFORCE THE  
FLANGE CONNECTION AT 35.25'. THE REINFORCED TOWER  
SHALL BE ANALYZED PRIOR TO THE INSTALLATION OF THIS  
DESIGN.

**NOTE:**  
WTS SCOPE OF WORK DOES NOT INCLUDE A STRUCTURAL ANALYSIS OF THIS ANTENNA MOUNT. NEW ANTENNAS AND EQUIPMENT SHOWN ON THIS PLAN HAVE NOT BEEN EVALUATED TO VERIFY THE MOUNT HAS THE CAPACITY TO ADEQUATELY SUPPORT THESE ANTENNAS. PRIOR TO ANY ANTENNA OR EQUIPMENT INSTALLATION, A STRUCTURAL EVALUATION OF THE MOUNT, INCLUDING ALL ANTENNA MOUNTING SYSTEMS & HARDWARE SHALL BE PERFORMED.

NOTE:  
ANTENNA INFORMATION OBTAINED FROM T-MOBILE  
RF DATA CONFIGURATION SHEET DATED 02/06/24.



## NEW ANTENNA PLAN

SCALE: NONE

2



EXPIRES: 11/30/25      SIGNED: 04/29/24

## REVISIONS

REV.	ISSUED FOR	DATE	BY
A	FOR CLIENT REVIEW	04/23/24	ATK
0	FINAL	04/29/24	TRK

AQUATIC \ DESIGN & PROGRAM MANAGEMENT  
CIVIL \ TELECOMMUNICATION \ MECHANICAL  
PLUMBING \ ELECTRICAL \ LAND SURVEYING  
ACCESSIBILITY CONSULTING \ STRUCTURAL

**CHECK: JKF**

DRAWN: ATK

JOB: T2400215

**A-2**

## ANTENNA PLANS

**WT GROUP**  
Engineering with Precision, Pace and Passion.  
2875 Pradium Avenue | Hoffman Estates, IL 60192  
T: 224.293.6333 | F: 224.293.8444  
wtegrouping.com

© License No: 184-007570-0015 Expires: 04.30.2025  
ILL Copyright 2024 The W.T. Group, LLC



WWT Group  
Engineering • Design • Consulting

**GARNSEY PARK RL**  
**CH75294D**  
1300 N. KELLY AVENUE  
JOLIET, IL 60435