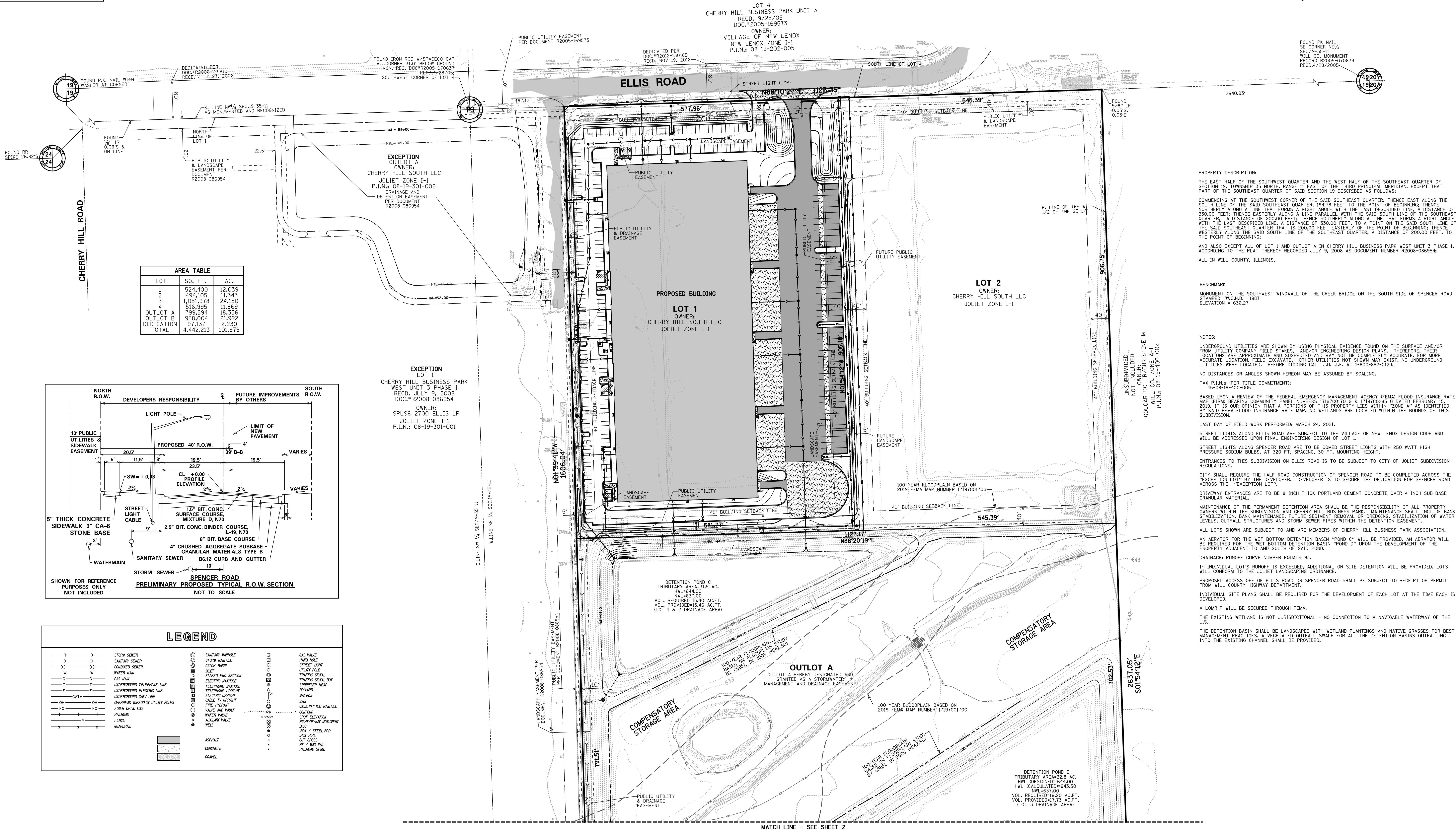
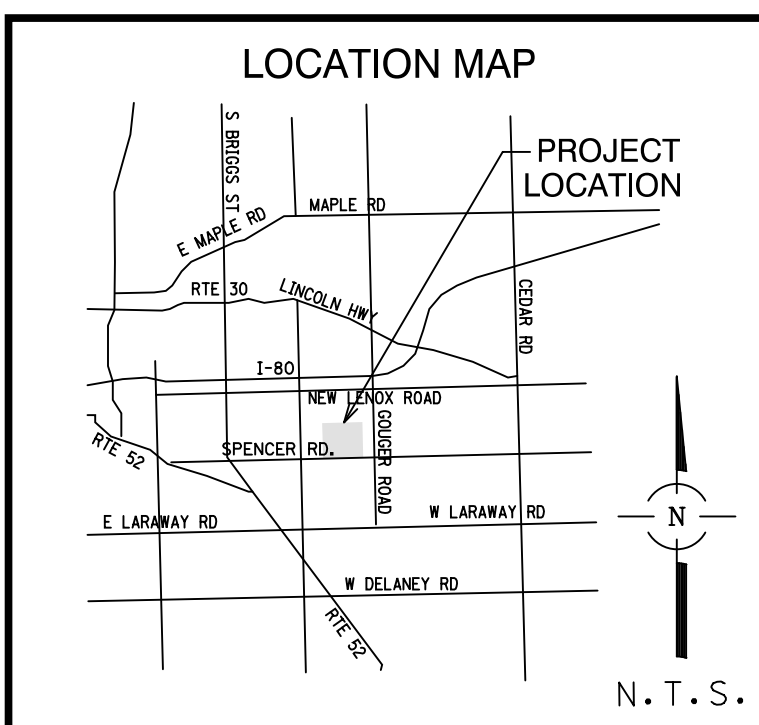
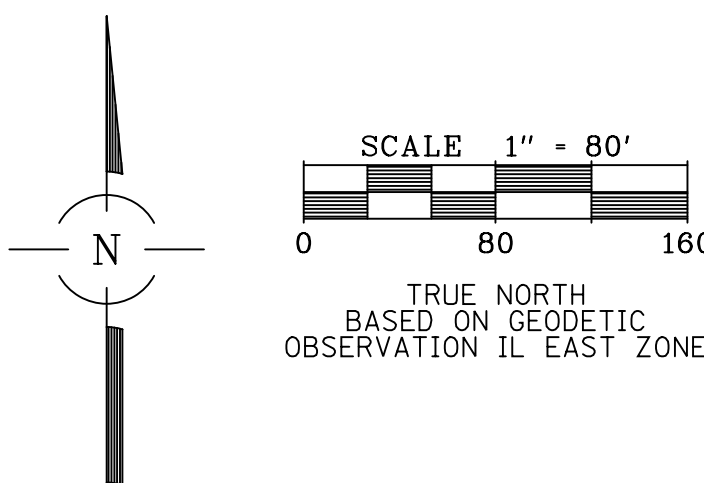


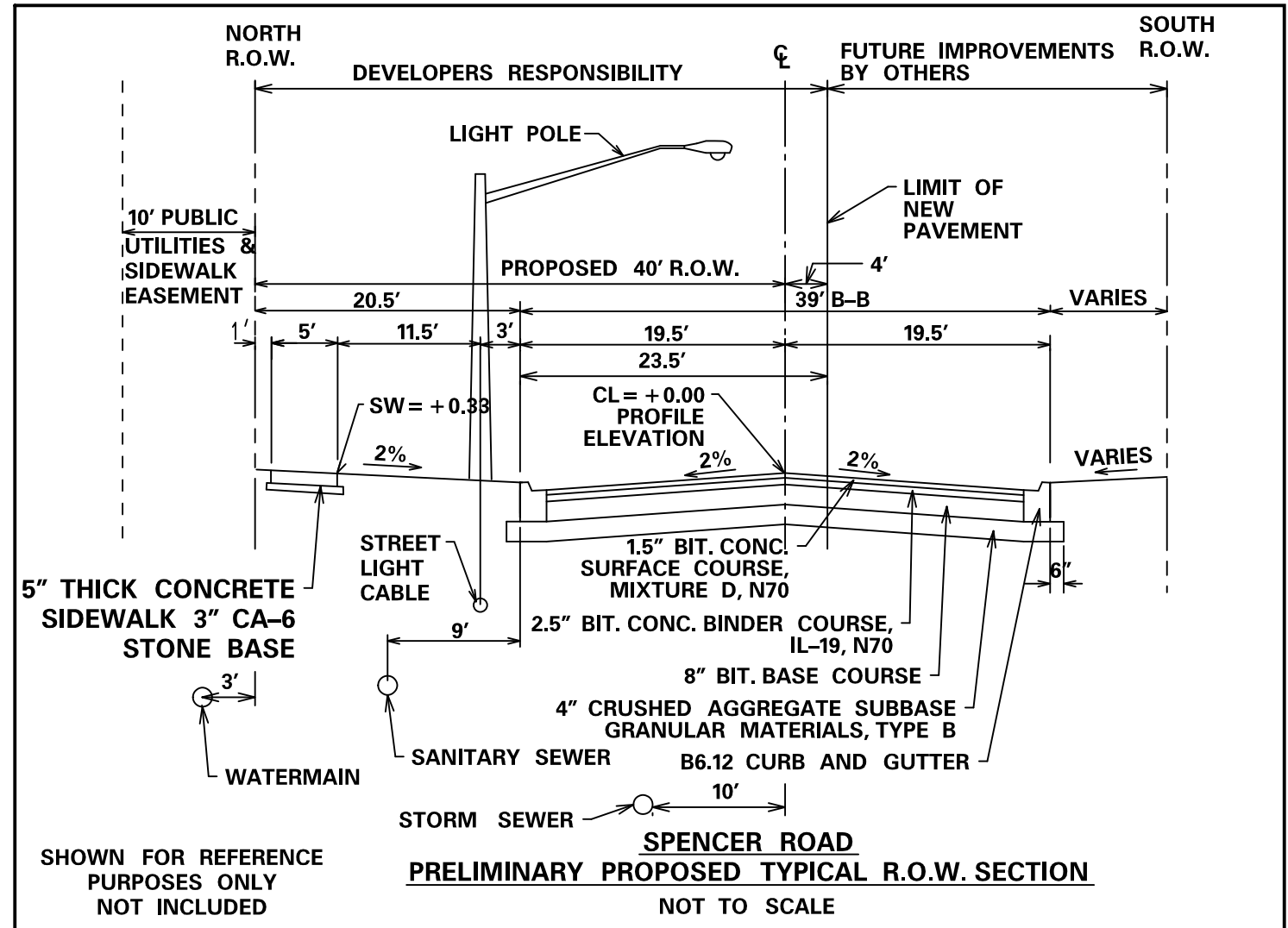
PRELIMINARY PLAT OF SUBDIVISION OF  
CHERRY HILL BUSINESS PARK WEST UNIT 6

BEING A SUBDIVISION OF THE SOUTHWEST QUARTER AND THE WEST HALF OF THE SOUTHEAST QUARTER OF SECTION 19,  
TOWNSHIP 35 NORTH, RANGE 11 EAST OF THE THIRD PRINCIPAL MERIDIAN, IN WILL COUNTY, ILLINOIS.

NOT FOR RECORDING



AREA TABLE		
LOT	SQ. FT.	AC.
1	524,400	12.039
2	494,105	11.343
3	1,051,978	24.150
516-395	11,869	
799,594	18.356	
958,004	21.992	
971,137	2.230	
DEDICATION		
TOTAL	4,442,213	101.979



LEGEND			
	STORM SEWER		SANITARY MANHOLE
	SANITARY SEWER		CATCH BASIN
	WATER MAIN		FLARED END SECTION
	GAS MAIN		ELECTRIC MANHOLE
	UNDERGROUND TELEPHONE LINE		TELEPHONE MANHOLE
	UNDERGROUND ELECTRIC LINE		ELECTRIC UPFRONT
	CATV		CABLE TV UPFRONT
	OVERHEAD WIRES ON UTILITY POLES		FIRE HYDRANT
	FIBER OPTIC LINE		VALVE AND VAULT
	RAILROAD		WATER VALVE
	FENCE		AUXILIARY VALVE
	GUARDRAIL		WELL
	ASPHALT		UNIDENTIFIED MANHOLE
	CONCRETE		SPOT ELEVATION
	GRAVEL		RIGHT-OF-WAY MONUMENT
			IRON PIPE
			OUT CROSS
			IRON / STEEL ROD
			NAIL
			RAILROAD SPIKE

NOT FOR RECORDING

PREPARED FOR:  
OWNER/DEVELOPER  
**northern**  
NORTHERN BUILDERS, INC.  
5060 RIVER ROAD  
SCHILLER PARK, IL 60176

FOR REVIEW  
PURPOSES ONLY

PRELIMINARY PLAT  
OF SUBDIVISION OF  
CHERRY HILL BUSINESS  
PARK WEST UNIT 6

REVISIONS:	
06/30/2021	
07/06/2021	
07/26/2021	
08/09/2021	



CONSULTING ENGINEERS  
SITE DEVELOPMENT ENGINEERS  
LAND SURVEYORS

9575 W. Higgins Road, Suite 700,  
Rosemont, Illinois 60018  
Phone: (847) 696-4060 Fax: (847) 696-4065

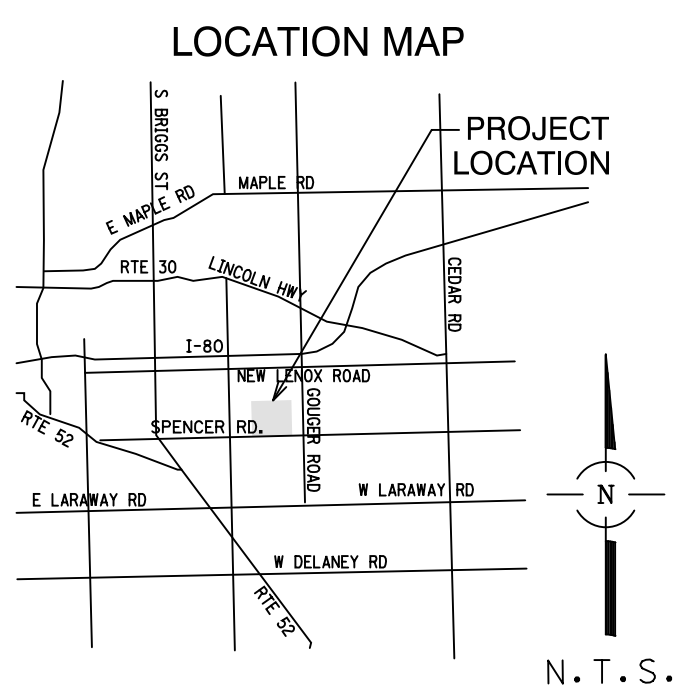
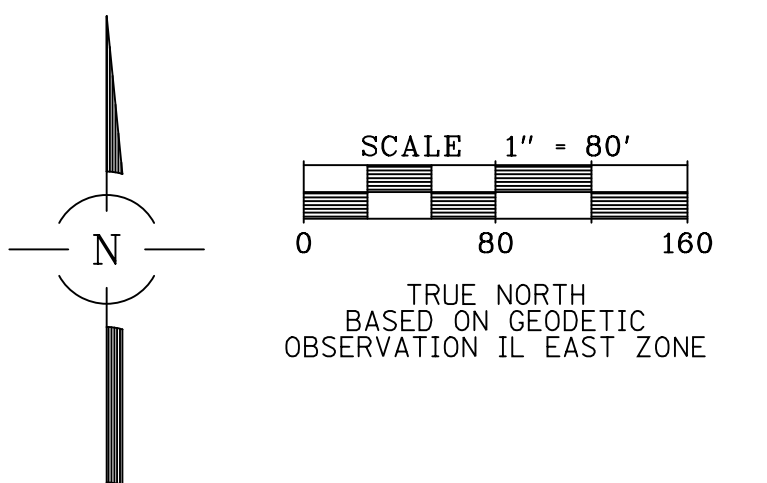
DATE: 06/11/2021
JOB NO: 3943
FILENAME: 3943.21PRESUB
SHEET 1 OF 2



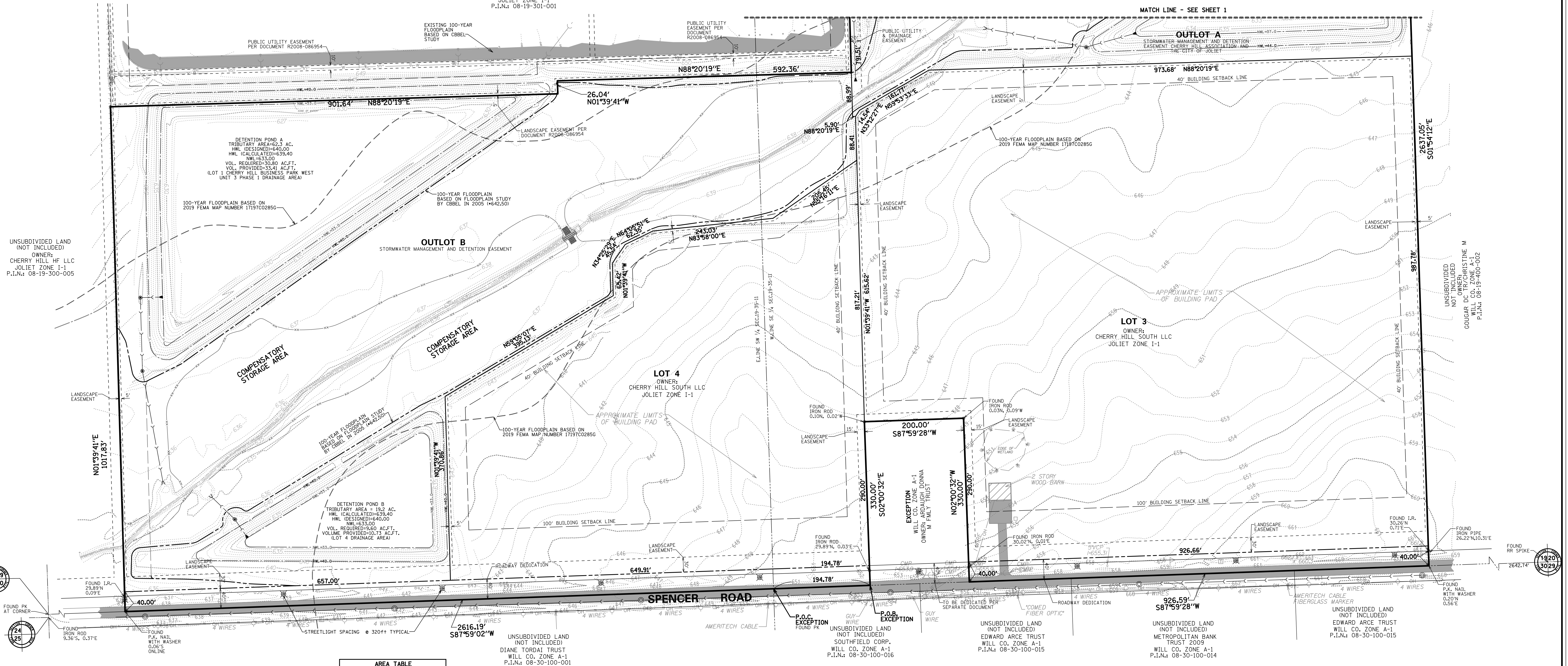
# PRELIMINARY PLAT OF SUBDIVISION OF CHERRY HILL BUSINESS PARK WEST UNIT 6

BEING A SUBDIVISION OF THE SOUTHWEST QUARTER AND THE WEST HALF OF THE SOUTHEAST QUARTER OF SECTION 19,  
TOWNSHIP 35 NORTH, RANGE 11 EAST OF THE THIRD PRINCIPAL MERIDIAN, IN WILL COUNTY, ILLINOIS.

NOT FOR RECORDING

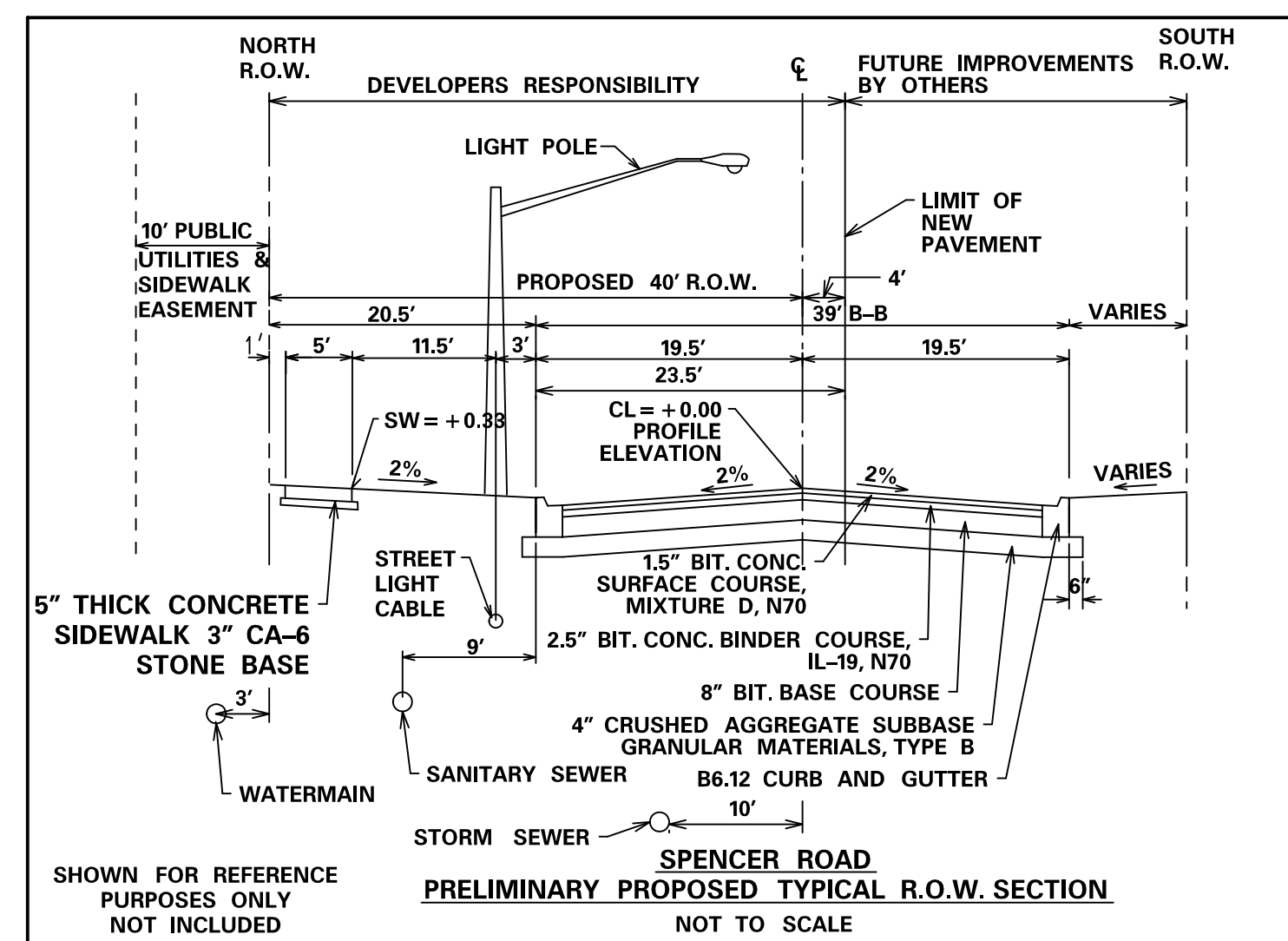


**EXCEPTION**  
LOT 1  
CHERRY HILL BUSINESS PARK  
WEST UNIT 3 PHASE 1  
REC'D JULY 9, 2008  
DOC.# R2008-086954  
OWNER:  
SPUS8 2700 ELLIS LP  
JOLIET ZONE 1-1  
P.I.N.: 08-19-301-001



LOT	SQ. FT.	AC.
1	524,400	12.039
2	494,105	11.343
3	1,051,978	24.150
4	516,395	11.869
5	799,594	18.356
OUTLOT A	958,004	21.992
OUTLOT B	971,137	2.230
TOTAL	4,442,213	101.979

LEGEND	
	STORM SEWER
	SANITARY SEWER
	COMBINED SEWER
	WATER MAIN
	GAS MAIN
	UNDERGROUND TELEPHONE LINE
	UNDERGROUND ELECTRIC LINE
	CATV
	OVERHEAD WIRES ON UTILITY POLES
	FIBER OPTIC LINE
	RAILROAD
	FENCE
	GUARDRAIL
	SANITARY MANHOLE
	STORM MANHOLE
	CATCH BASIN
	MANHOLE COVER
	ELECTRIC MANHOLE
	TELEPHONE UPRIGHT
	CABLE TV UPRIGHT
	VALVE AND VAULT
	WATER VALVE
	NATURAL VALVE
	WELL
	GAS VALVE
	HAND HOLE
	STREET LIGHT
	TRAFFIC SIGNAL
	TRAFFIC SIGNAL BOX
	SPRINKLER HEAD
	MANHOLE
	SEWER MANHOLE
	UNIDENTIFIED MANHOLE
	SPOT ELEVATION
	RIGHT-OF-WAY MONUMENT
	DITCH
	STEEL ROD
	IRON PIPE
	CUT CROSS
	P.N. NAIL
	RAILROAD SPIKE
	ASPHALT
	CONCRETE
	GRAVEL



NOT FOR RECORDING

PREPARED FOR:  
OWNER/DEVELOPER  
**northern**  
NORTHERN BUILDERS, INC.  
5060 RIVER ROAD  
SCHILLER PARK, IL 60176

FOR REVIEW  
PURPOSES ONLY

PRELIMINARY PLAT  
OF SUBDIVISION OF  
CHERRY HILL BUSINESS  
PARK WEST UNIT 6

REVISIONS:
06/30/2021
07/06/2021
07/26/2021
08/09/2021



CONSULTING ENGINEERS  
SITE DEVELOPMENT ENGINEERS  
LAND SURVEYORS

9575 W. Higgins Road, Suite 700,  
Rosemont, Illinois 60018  
Phone: (847) 696-4060 Fax: (847) 696-4065

DATE: 06/11/2021
JOB NO: 3943
FILENAME: 3943.21PRESUB
SHEET 2 OF 2