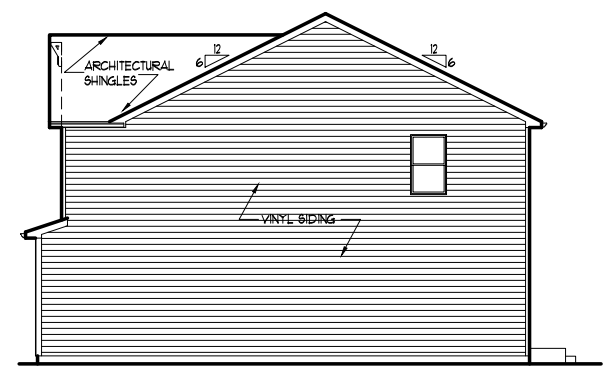
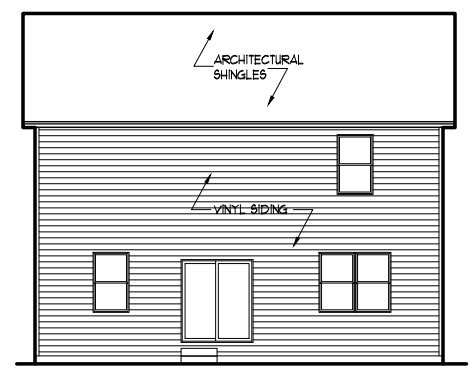


TOTAL FRONT ELEVATION SIDEABLE AREA
 (NOT INCLUDING WINDOWS, DOORS, & ROOF AREA) = 459.16 SQ. FT.
 25% OF SIDEABLE AREA = 114.79 SQ. FT.
 TOTAL MASONRY AREA = 133.00 SQ. FT. (29.0%)

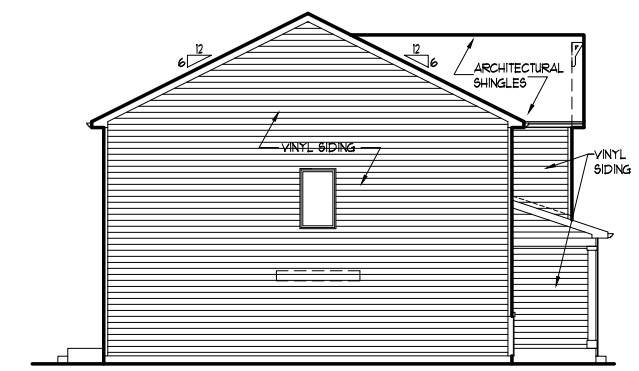
ELEVATION "A5"



TYPICAL RIGHT ELEVATION

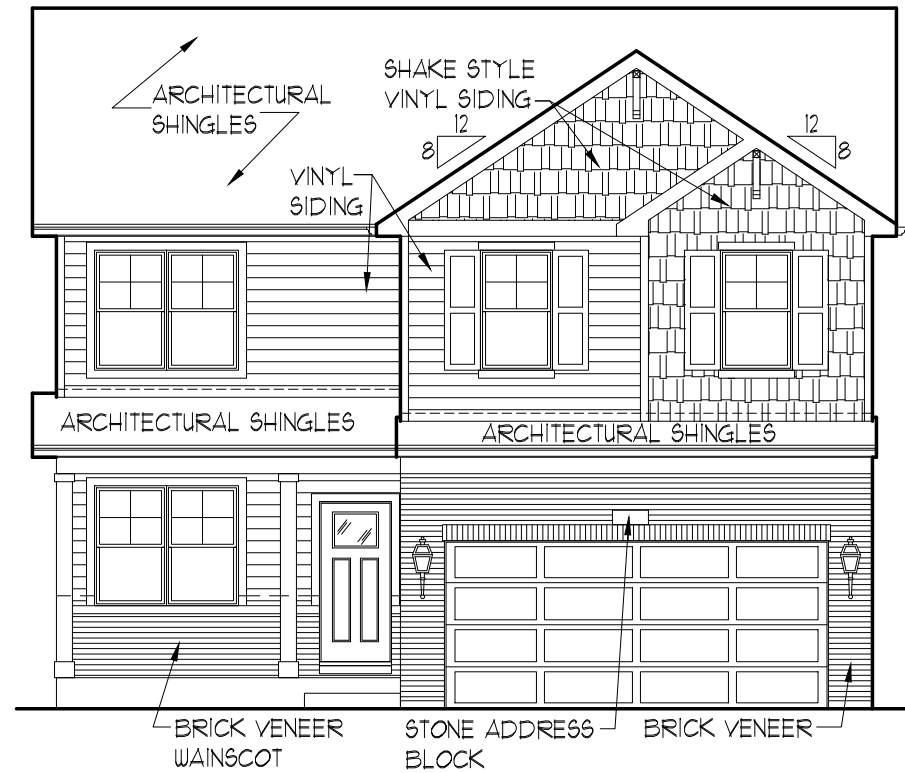


TYPICAL REAR ELEVATION



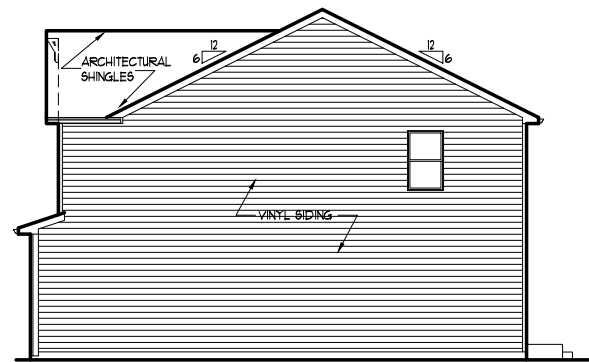
TYPICAL LEFT ELEVATION

x424
PRAIRIE LANDING
JOLIET, IL.
X-SERIES

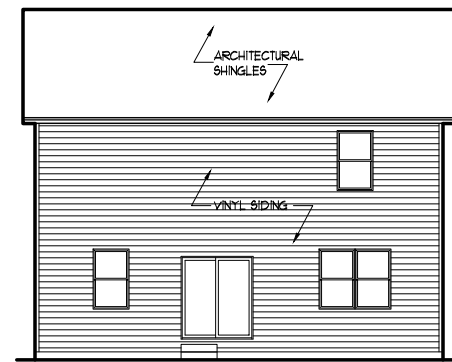


TOTAL FRONT ELEVATION SIDEABLE AREA
 (NOT INCLUDING WINDOWS, DOORS, & ROOF AREA) = 428.99 SQ. FT.
 25% OF SIDEABLE AREA = 107.25 SQ. FT.
 TOTAL MASONRY AREA = 128.39 SQ. FT. (29.9%)

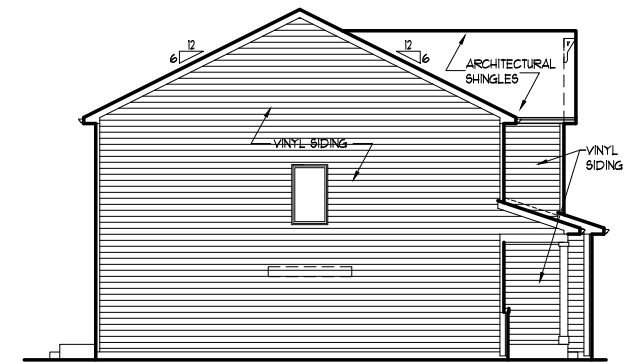
ELEVATION "B4"



TYPICAL RIGHT ELEVATION

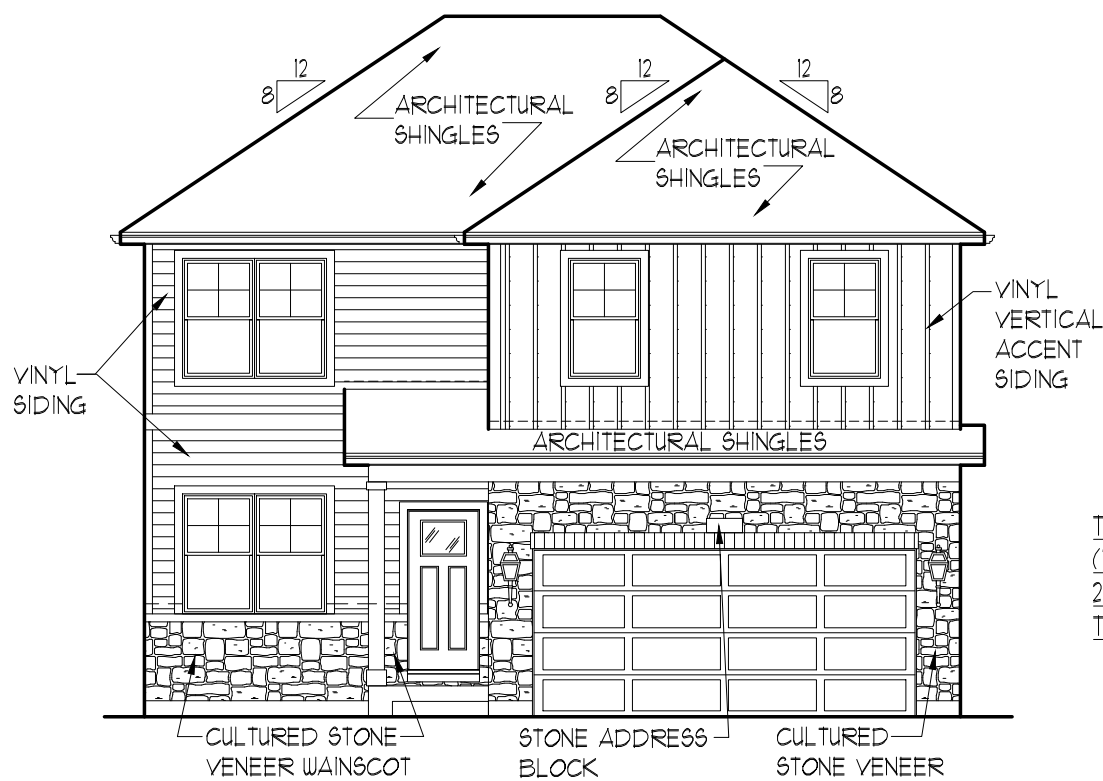


TYPICAL REAR ELEVATION



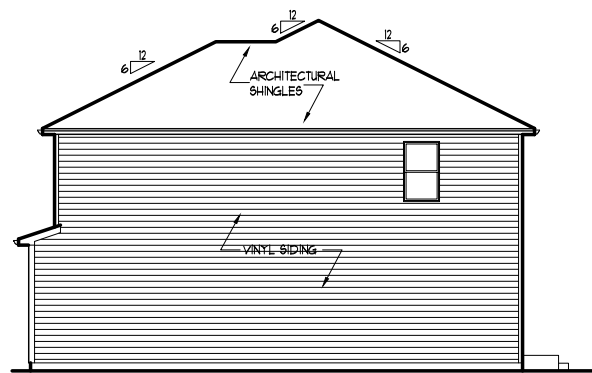
TYPICAL LEFT ELEVATION

x424
PRAIRIE LANDING
JOLIET, IL.
X-SERIES

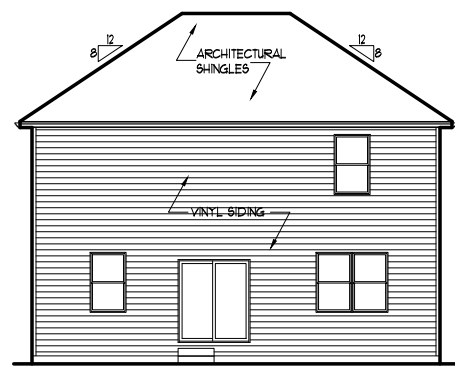


TOTAL FRONT ELEVATION SIDEABLE AREA
 (NOT INCLUDING WINDOWS, DOORS, & ROOF AREA) = 386.40 SQ. FT.
 25% OF SIDEABLE AREA = 96.60 SQ. FT.
 TOTAL MASONRY AREA = 133.00 SQ. FT. (34.4%)

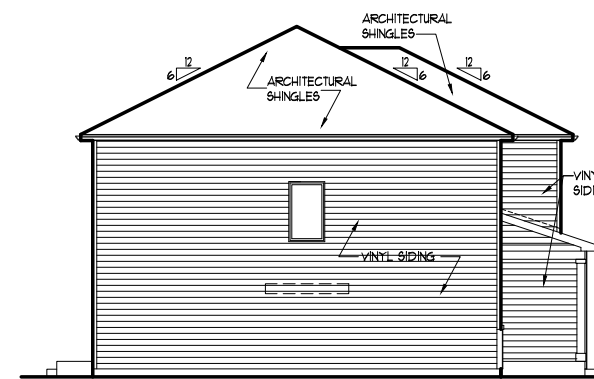
ELEVATION "C5"



TYPICAL RIGHT ELEVATION

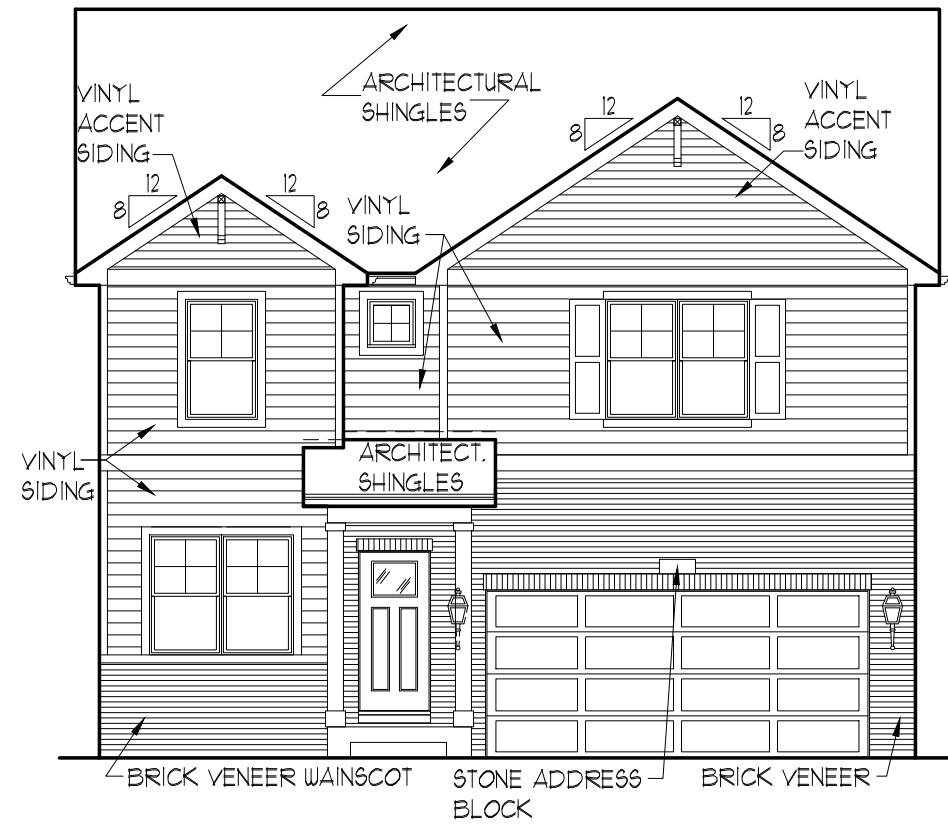


TYPICAL REAR ELEVATION



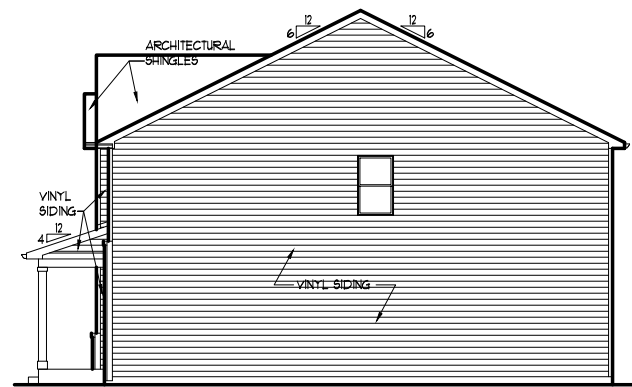
TYPICAL LEFT ELEVATION

x424
PRAIRIE LANDING
JOLIET, IL.
X-SERIES

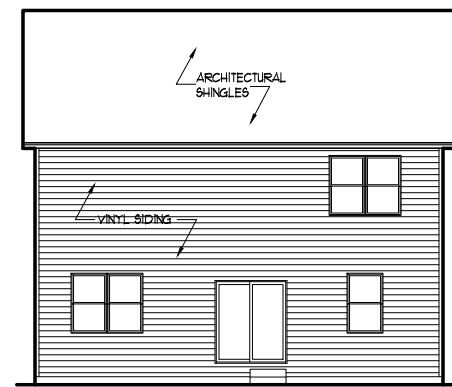


TOTAL FRONT ELEVATION SIDEABLE AREA
 (NOT INCLUDING WINDOWS, DOORS, & ROOF AREA) = 521.05 SQ. FT.
 25% OF SIDEABLE AREA = 130.26 SQ. FT.
 TOTAL MASONRY AREA = 197.00 SQ. FT. (37.8%)

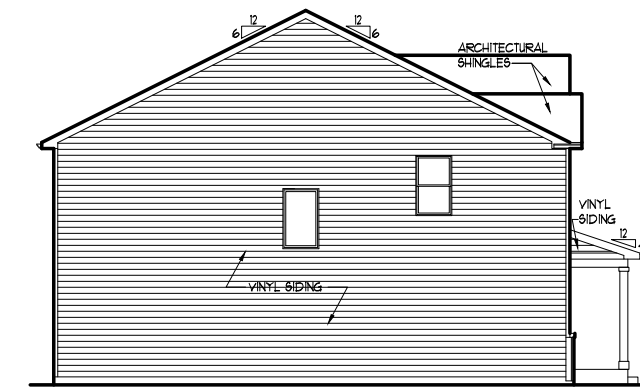
ELEVATION "A4"



TYPICAL RIGHT ELEVATION



TYPICAL REAR ELEVATION



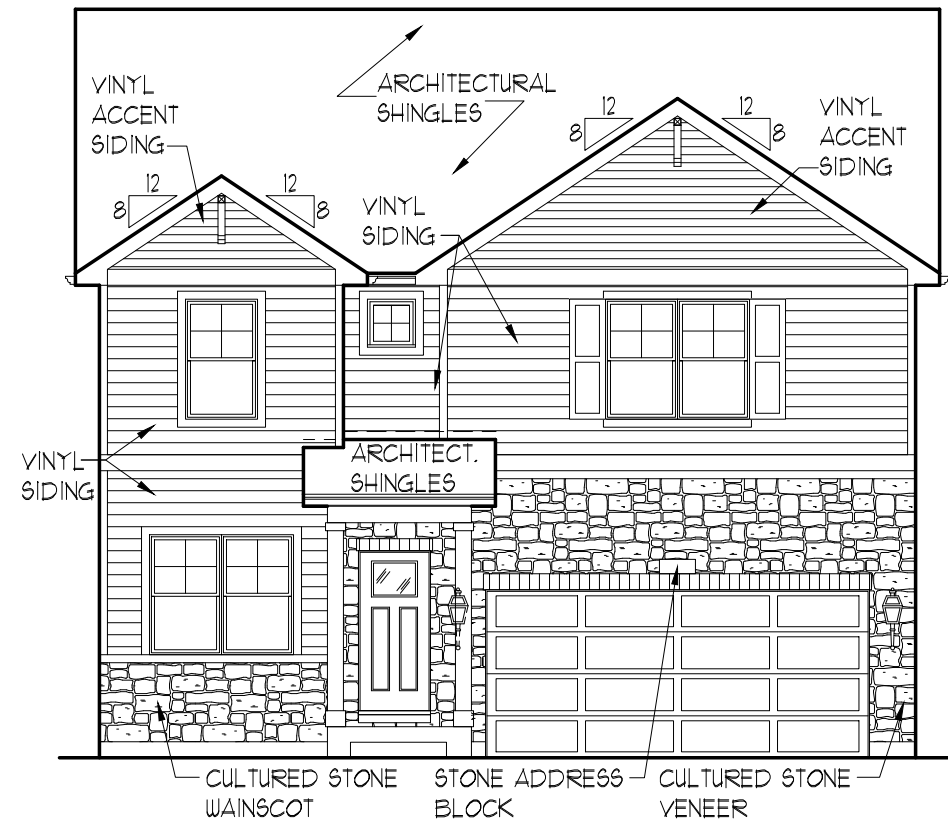
TYPICAL LEFT ELEVATION

x427

PRAIRIE LANDING

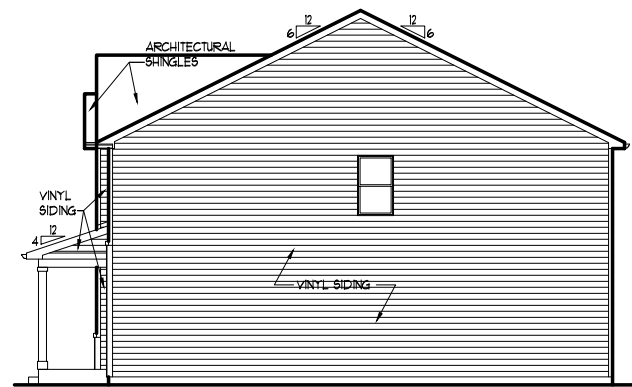
JOLIET, IL.

X-SERIES

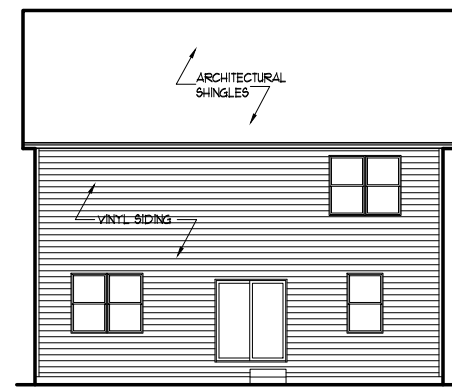


TOTAL FRONT ELEVATION SIDEABLE AREA
 (NOT INCLUDING WINDOWS, DOORS, & ROOF AREA) = 521.05 SQ. FT.
 25% OF SIDEABLE AREA = 130.26 SQ. FT.
 TOTAL MASONRY AREA = 193.00 SQ. FT. (31.0%)

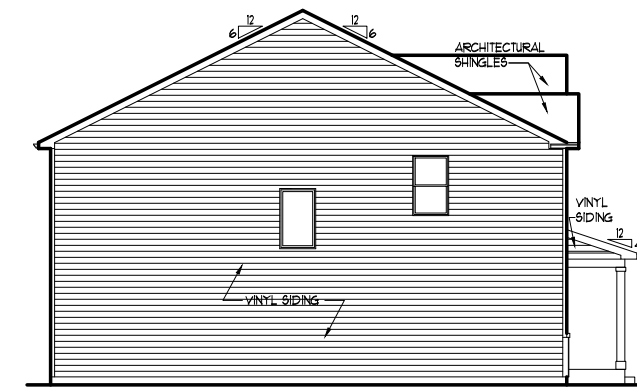
ELEVATION "A5"



TYPICAL RIGHT ELEVATION

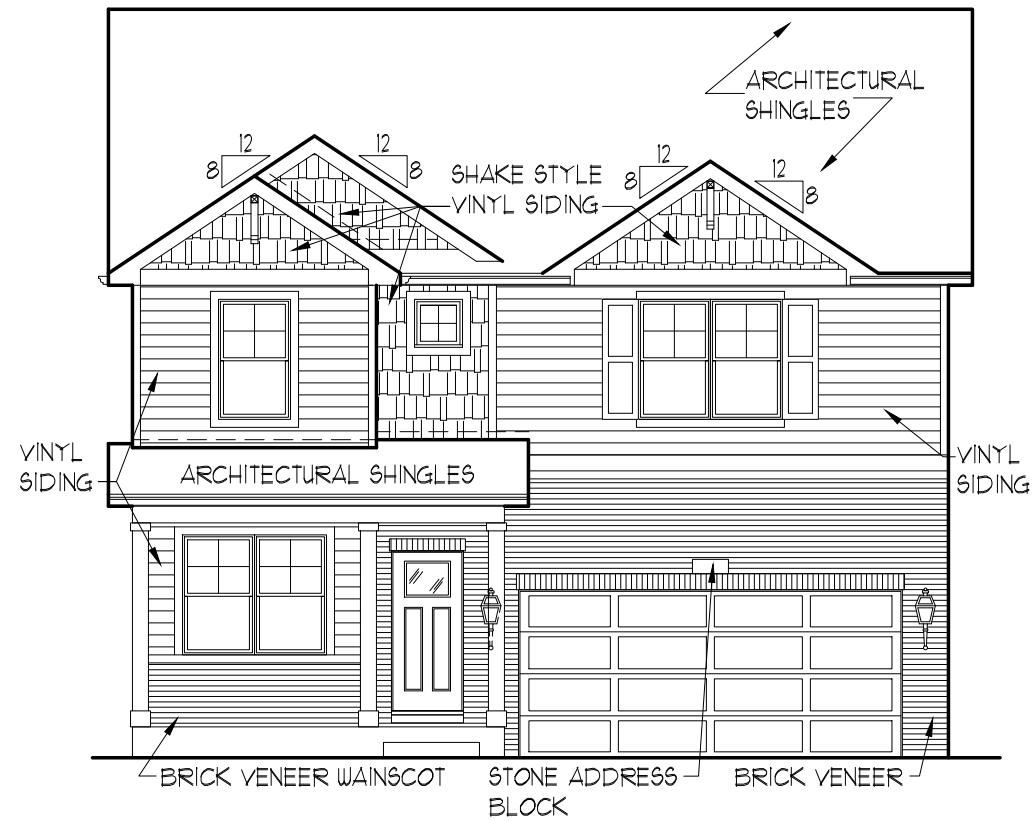


TYPICAL REAR ELEVATION



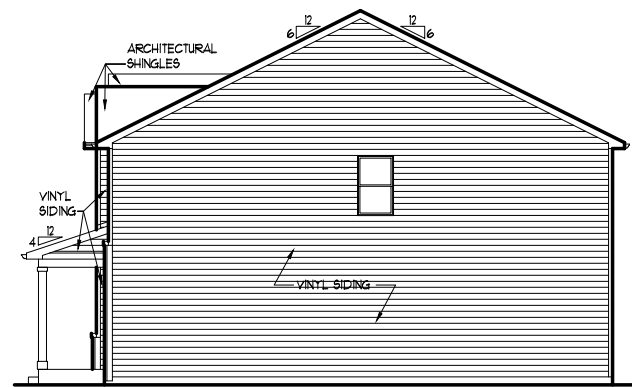
TYPICAL LEFT ELEVATION

x427
PRAIRIE LANDING
JOLIET, IL.
X-SERIES

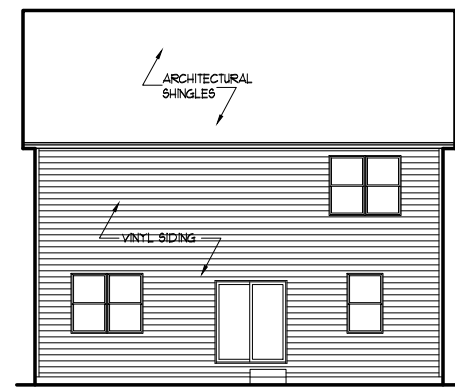


TOTAL FRONT ELEVATION SIDEABLE AREA
 (NOT INCLUDING WINDOWS, DOORS, & ROOF AREA) = 459.84 SQ. FT.
 25% OF SIDEABLE AREA = 114.96 SQ. FT.
 TOTAL MASONRY AREA = 187.90 SQ. FT. (40.9%)

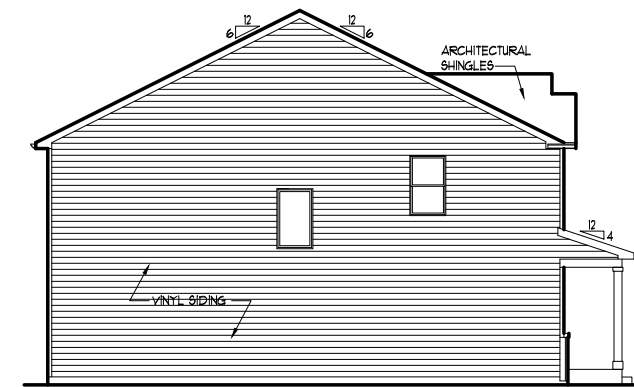
ELEVATION "B4"



TYPICAL RIGHT ELEVATION

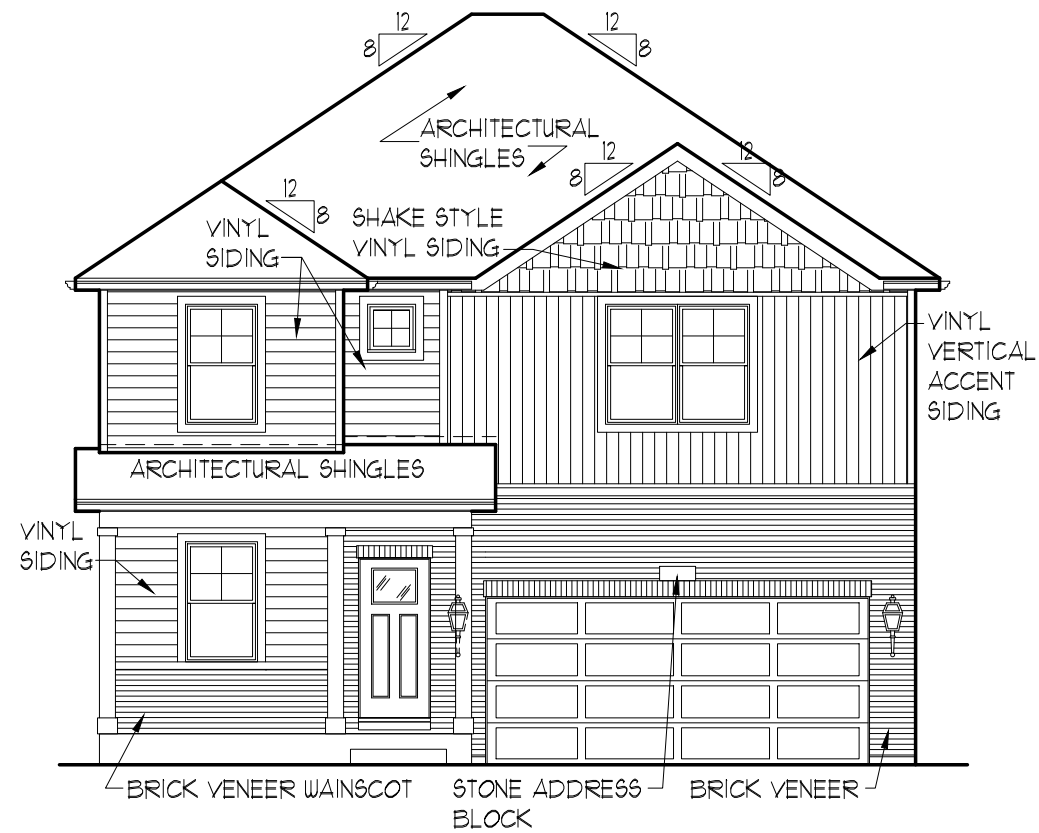


TYPICAL REAR ELEVATION



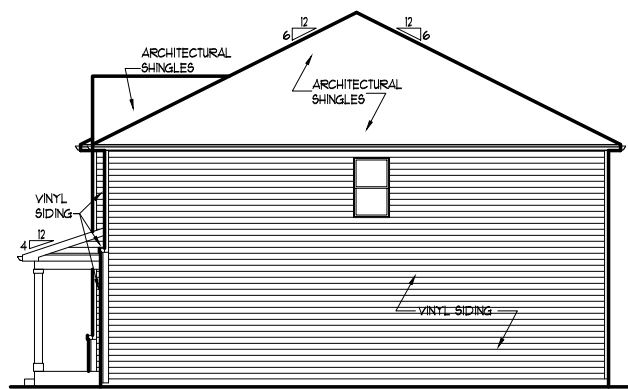
TYPICAL LEFT ELEVATION

x427
PRAIRIE LANDING
JOLIET, IL.
X-SERIES

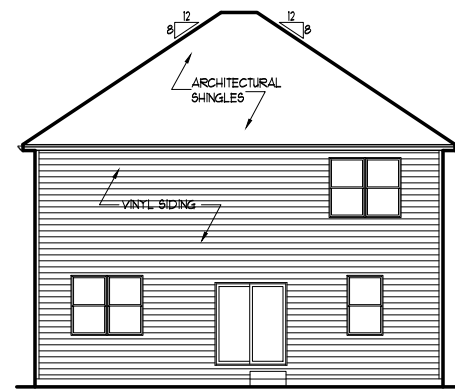


TOTAL FRONT ELEVATION SIDEABLE AREA
 (NOT INCLUDING WINDOWS, DOORS, & ROOF AREA) = 457.85 SQ. FT.
 25% OF SIDEABLE AREA = 114.46 SQ. FT.
 TOTAL MASONRY AREA = 187.90 SQ. FT. (41.0%)

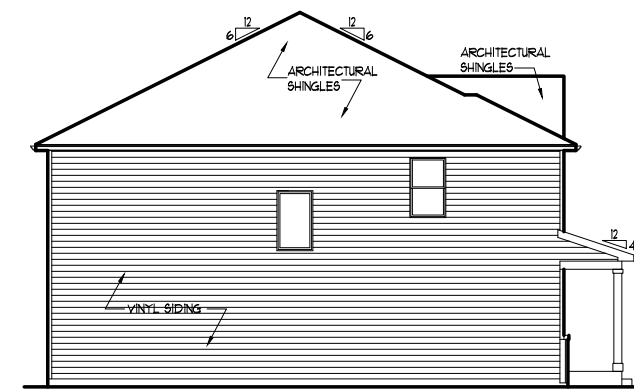
ELEVATION "D4"



TYPICAL RIGHT ELEVATION

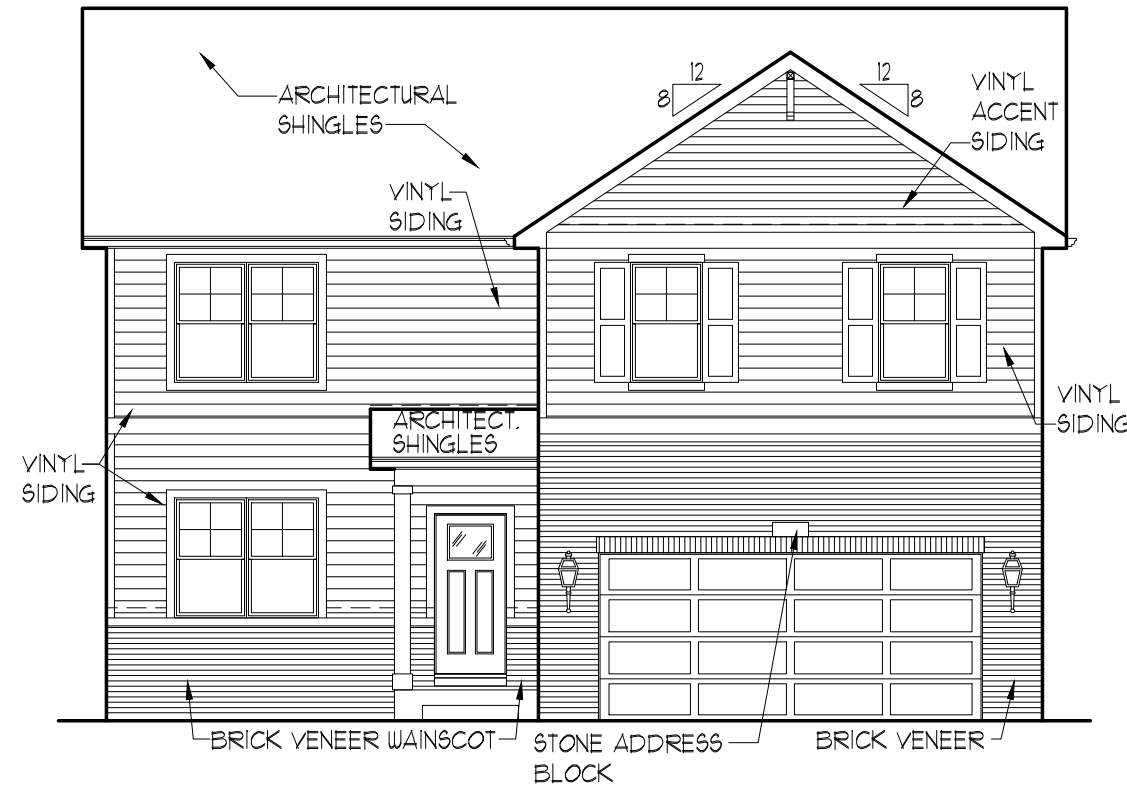


TYPICAL REAR ELEVATION



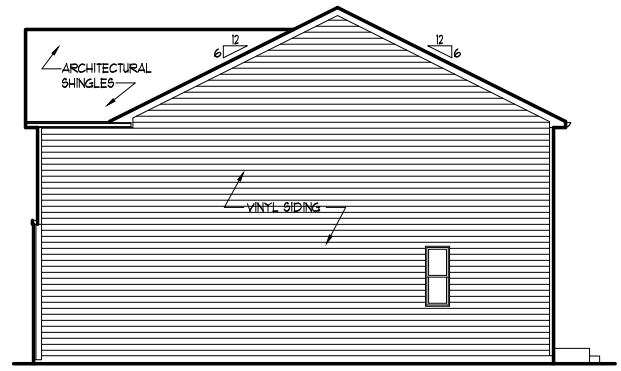
TYPICAL LEFT ELEVATION

x427
PRAIRIE LANDING
JOLIET, IL.
X-SERIES

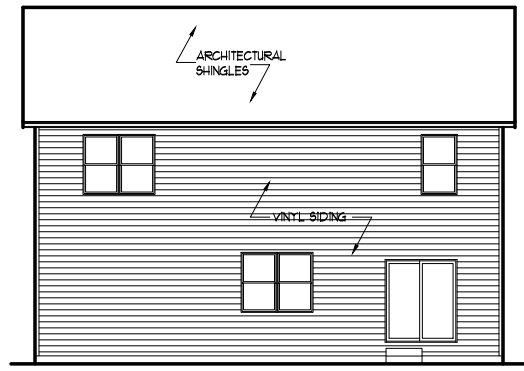


TOTAL FRONT ELEVATION SIDEABLE AREA
 (NOT INCLUDING WINDOWS, DOORS, & ROOF AREA) = 593.59 SQ. FT.
 25% OF SIDEABLE AREA = 148.40 SQ. FT.
 TOTAL MASONRY AREA = 195.46 SQ. FT. (32.9%)

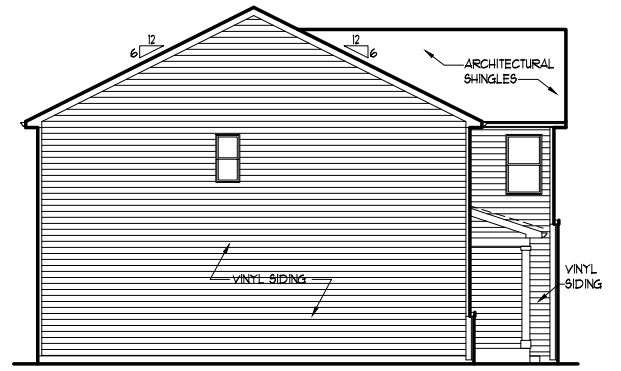
ELEVATION "A4"



TYPICAL RIGHT ELEVATION

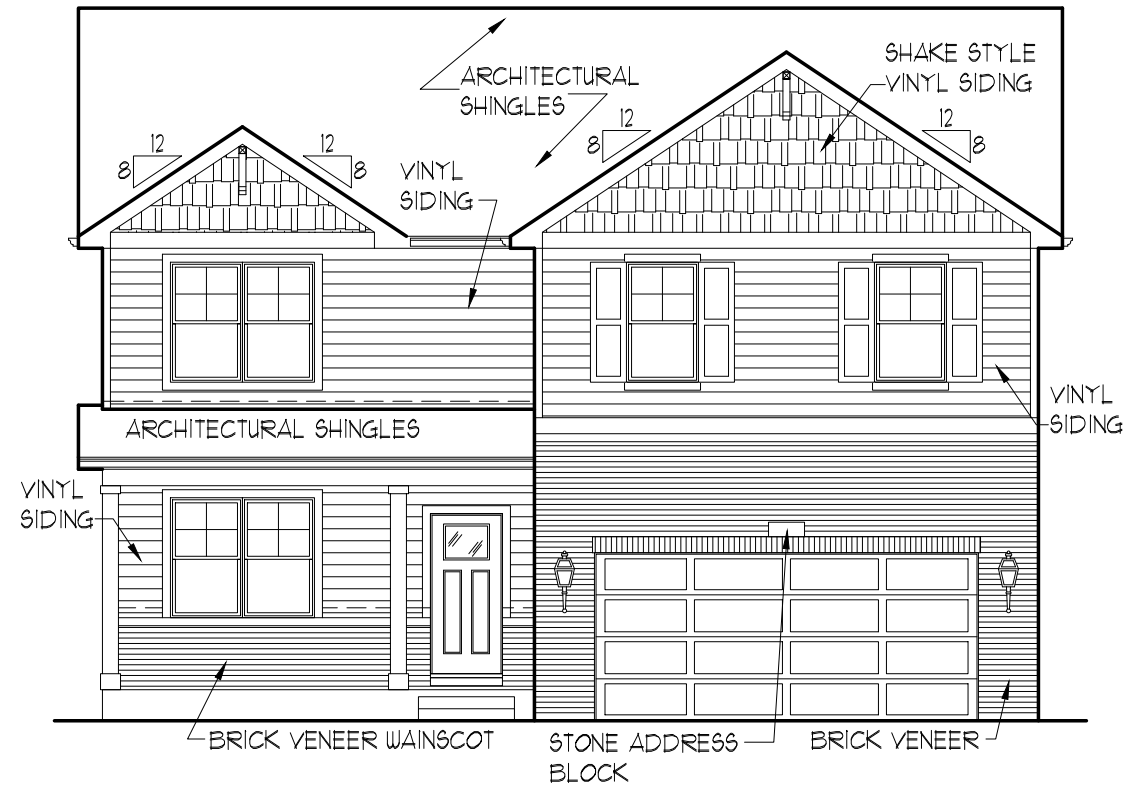


TYPICAL REAR ELEVATION



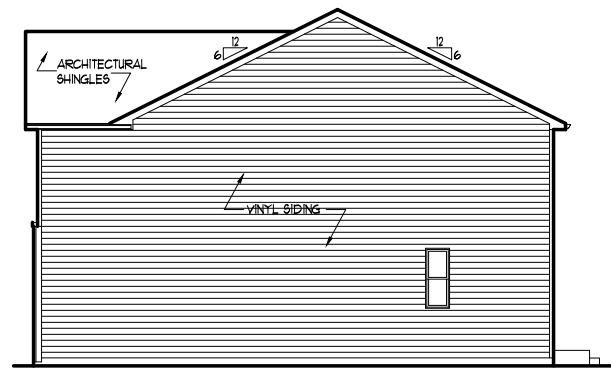
TYPICAL LEFT ELEVATION

x429
PRAIRIE LANDING
JOLIET, IL.
X-SERIES

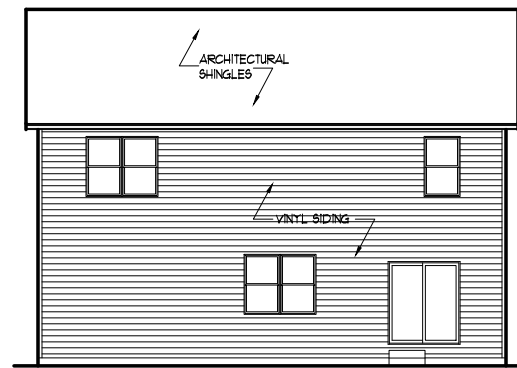


TOTAL FRONT ELEVATION SIDEABLE AREA
 (NOT INCLUDING WINDOWS, DOORS, & ROOF AREA) = 583.53 SQ. FT.
 25% OF SIDEABLE AREA = 145.88 SQ. FT.
 TOTAL MASONRY AREA = 183.96 SQ. FT. (31.5%)

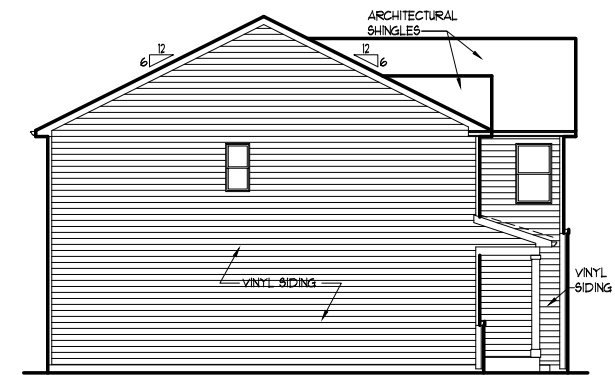
ELEVATION "B4"



TYPICAL RIGHT ELEVATION



TYPICAL REAR ELEVATION



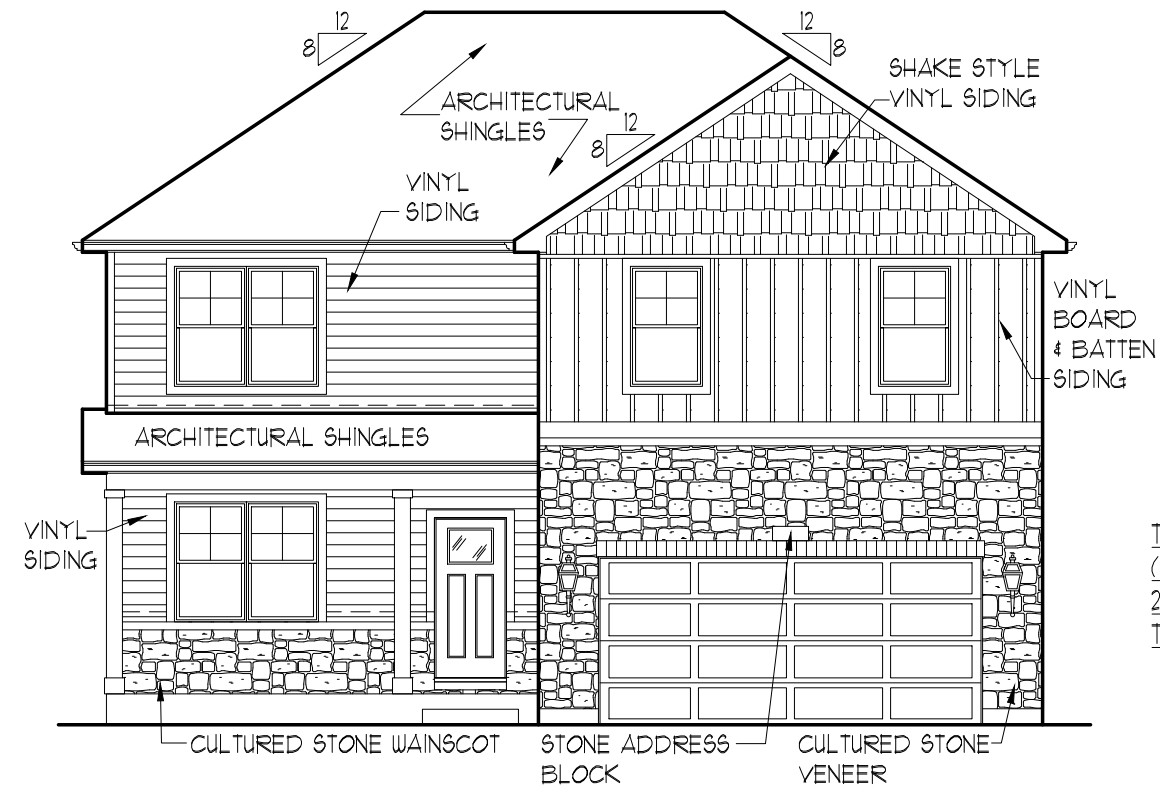
TYPICAL LEFT ELEVATION

x429

PRAIRIE LANDING

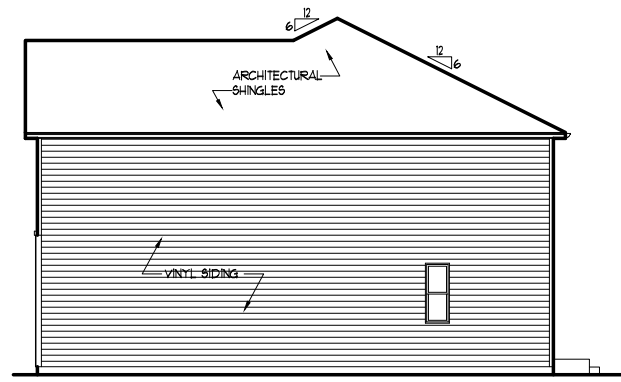
JOLIET, IL.

X-SERIES

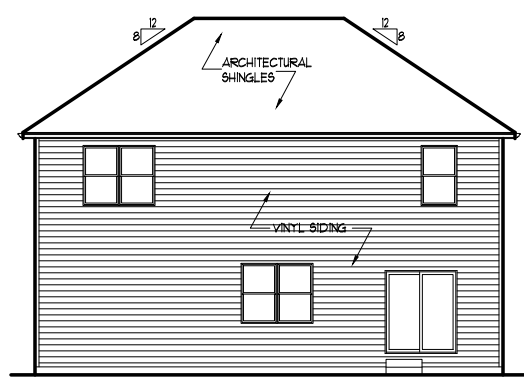


TOTAL FRONT ELEVATION SIDEABLE AREA
 (NOT INCLUDING WINDOWS, DOORS, & ROOF AREA) = 556.09 SQ. FT.
 25% OF SIDEABLE AREA = 139.02 SQ. FT.
 TOTAL MASONRY AREA = 182.29 SQ. FT. (32.8%)

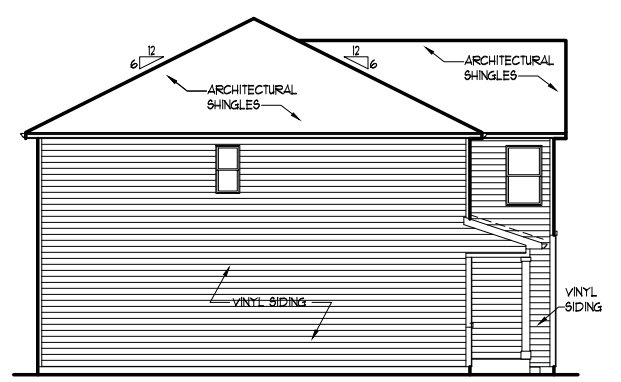
ELEVATION "D5"



TYPICAL RIGHT ELEVATION



TYPICAL REAR ELEVATION



TYPICAL LEFT ELEVATION

x429
PRAIRIE LANDING
JOLIET, IL.
X-SERIES