



JOLIET CITY PUBLIC ART PROPOSAL

TITLE: NATURE GATE (May vary)
JUANJO NOVELLA MAY 2024



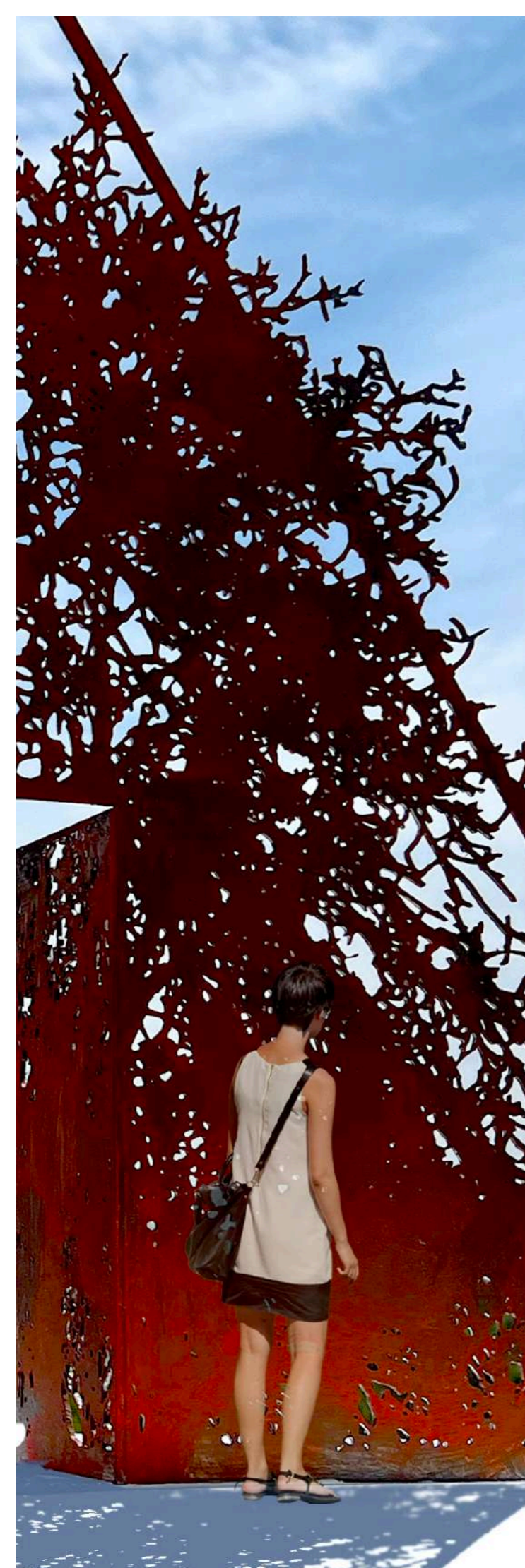




STATEMENT

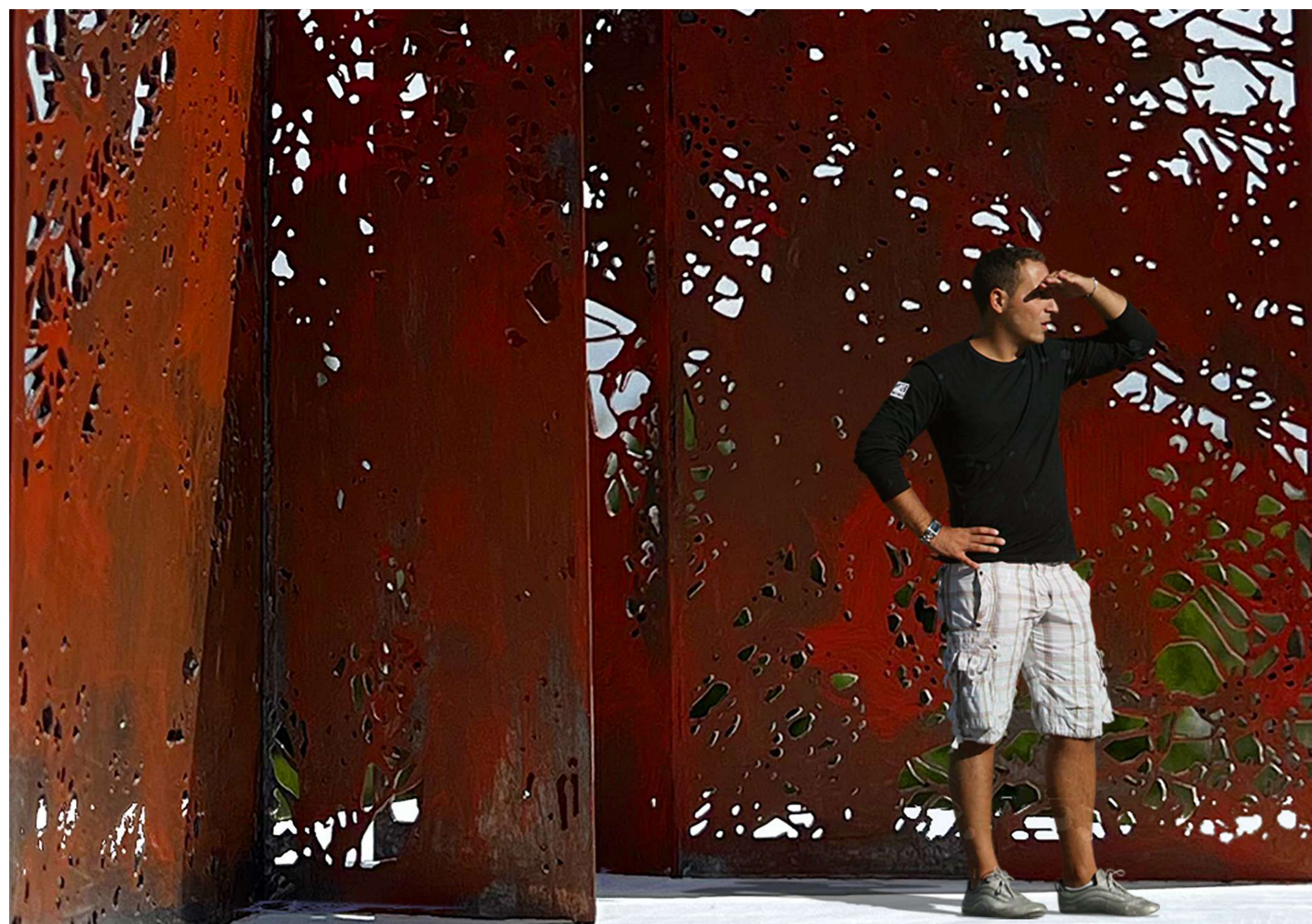
Main idea / inspiration: Nature is our home - Meeting place.

The city, nature and the human being come together in this sculpture full of symbolism and very open to suggestions. It wants to be a piece that functions as a powerful landmark and meeting place. It stimulates space and the mind, brings together formal aspects of the square's own drawing and provides powerful symbols such as the house, the forest and the door. All these symbols generate, alone and in combination with each other, endless interpretations and emotions. Formally there is a deliberate search for beauty linked to an ecological commitment and with a constructive vocation to be a habitable and transparent sculpture.



OBJECTIVES:

- Stimulation of space - It seeks to energize the space, the sculpture must be a dynamic element of the area
- Strong link with Nature and the citizen and its goals in terms of ecology.
- Commitment to this public space, the layout of the land and the architectural design where it will be located.
- Transparency, the pieces must allow you to see through them and also allow the flow of pedestrians.
- Projecting a prestigious image of the city.
- Creating identity, the sculpture must be a living element in which the city recognises itself.
- Closeness to the citizen, it must be immersive and active.
- Preserving its conceptual and aesthetic values over time.



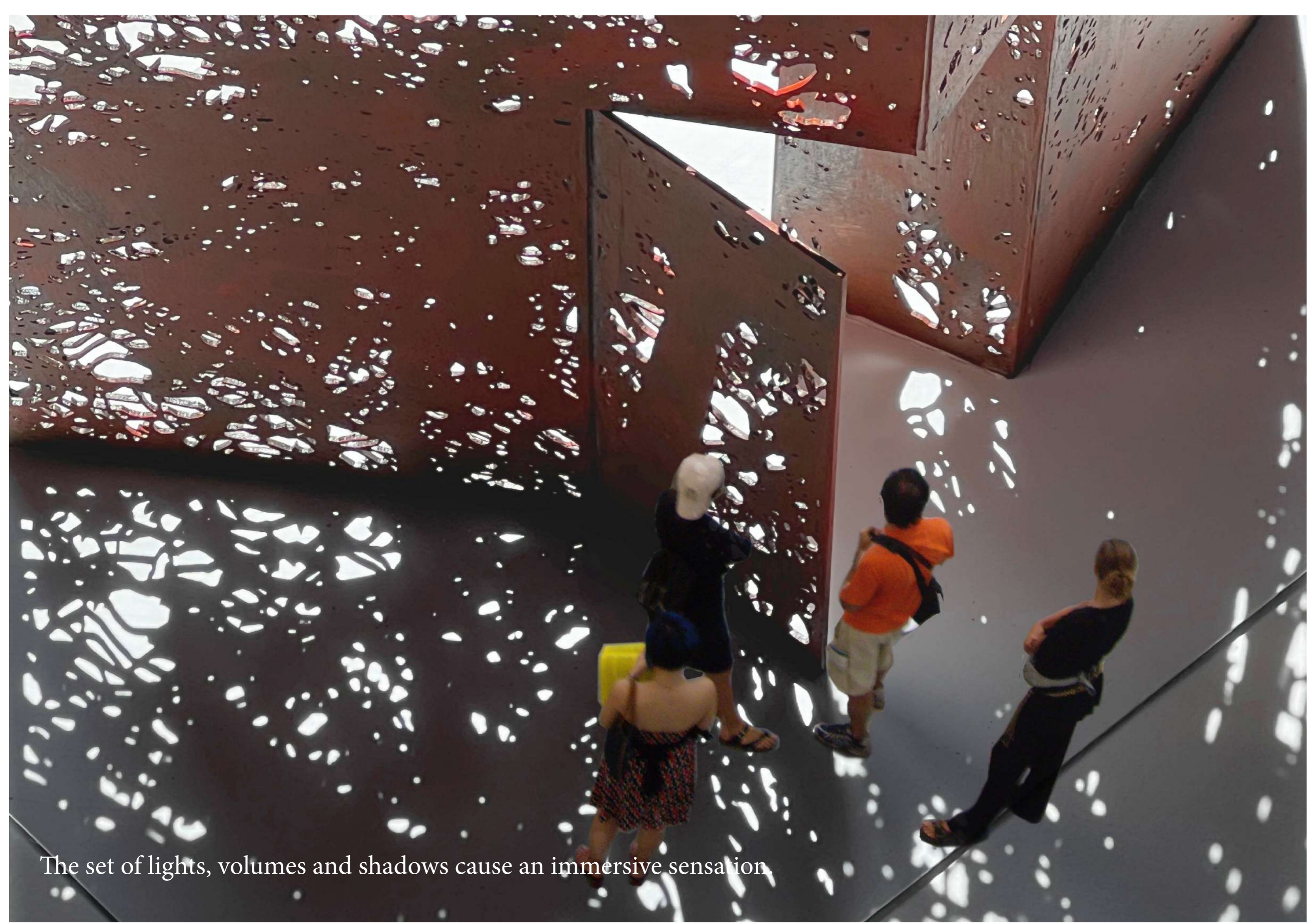


The ability to interact is essential to be a living element in the city



A contemporary work that remains alive, with the quality of a classic work, capable of efficiently withstanding the passage of time.

As it is a work that is visited, lived, that is not simply visual, the human experience is complete. It is a place visited, rather than a sculpture seen. This guarantees that the piece remains in the memory of those who know it.



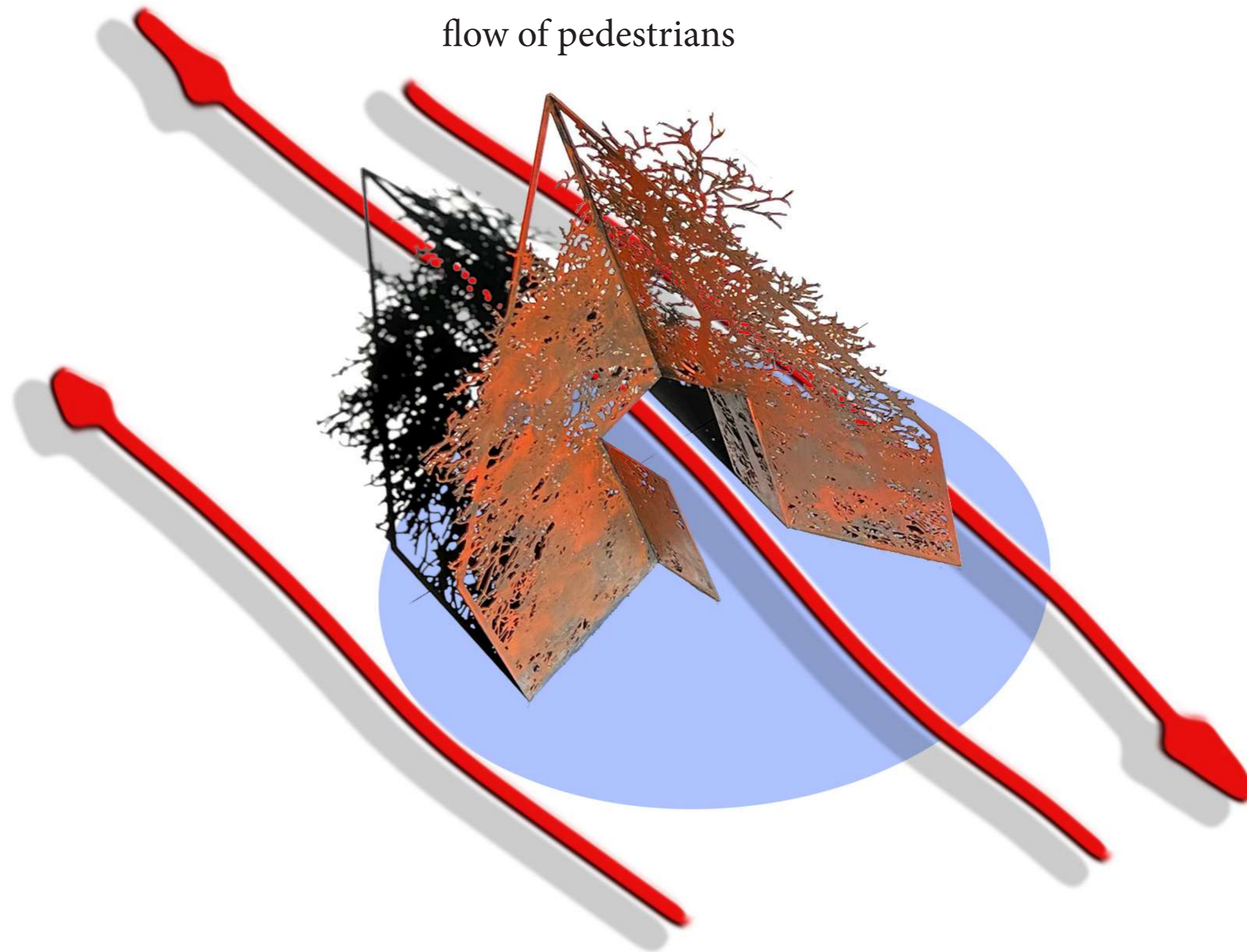
The set of lights, volumes and shadows cause an immersive sensation.

LOCATION:

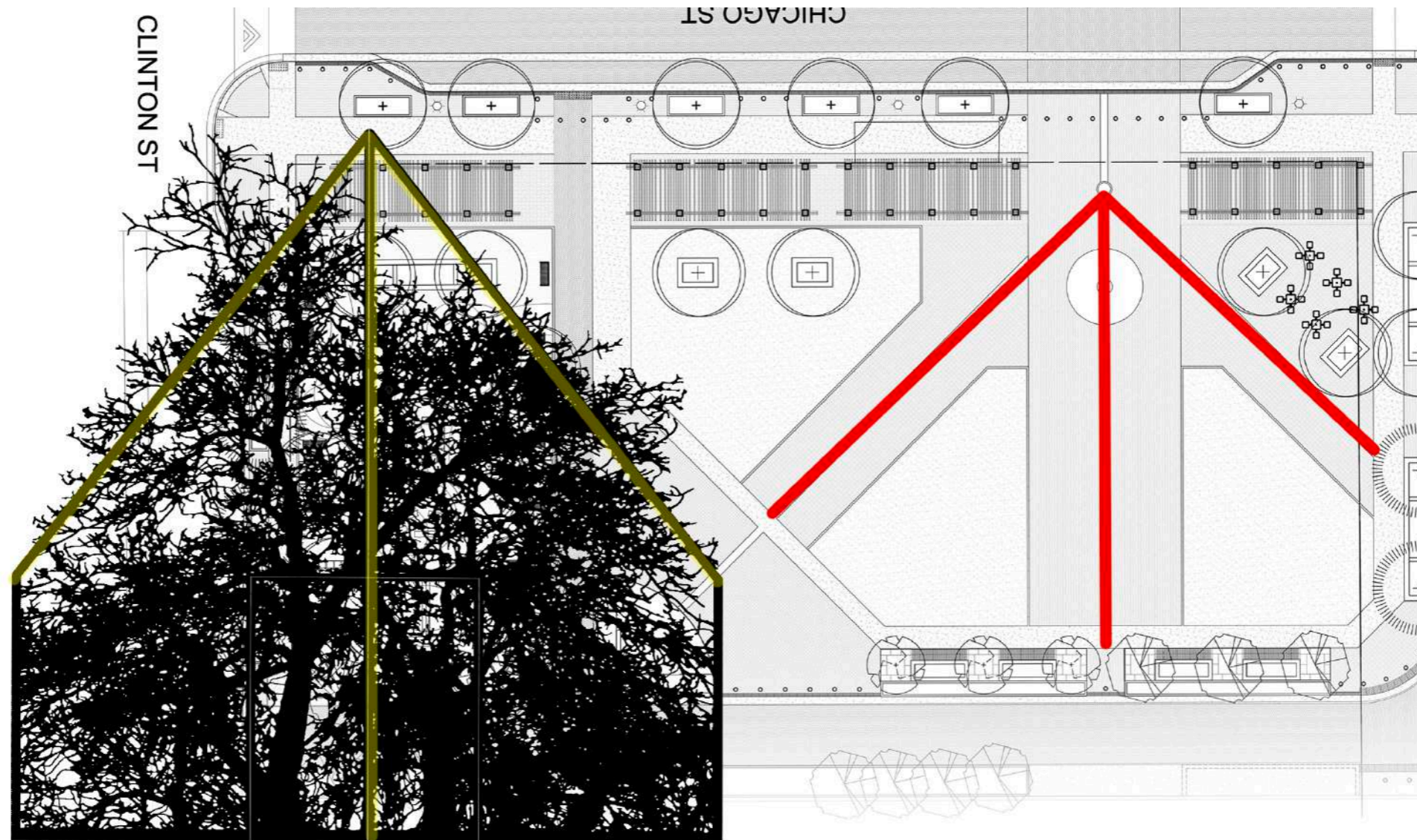
Any turning position in the circle of the path will observe great transparency both visually and physically and will allow a comfortable flow of pedestrians.







Likewise, the permeability of its door prevents massive occupation of the space despite its dimensions.

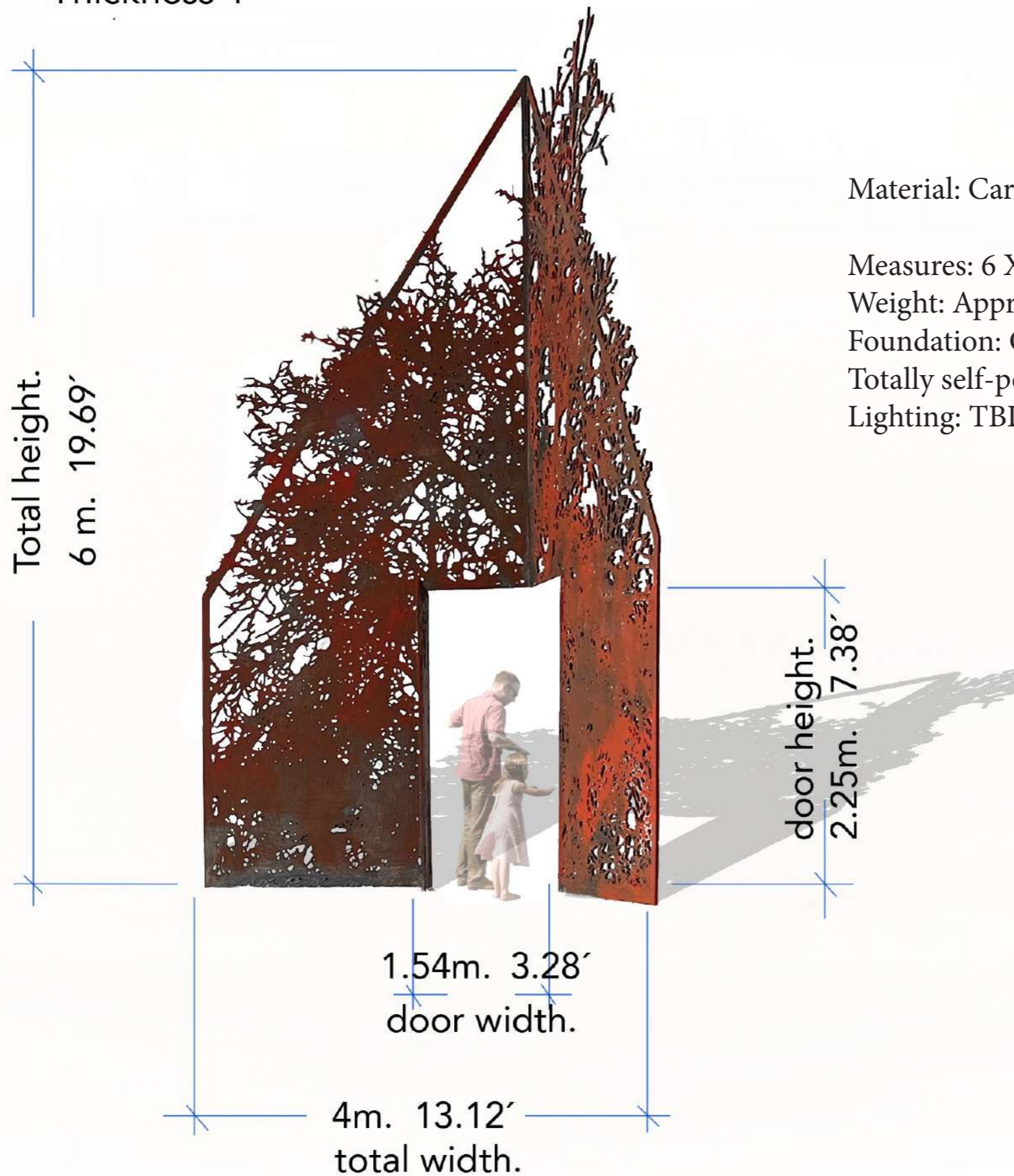


The layout of the sculpture is inspired by the layout of the very art site, this allows an integration that, although unnoticed, works at a spatial-sensory level.

The aim is to achieve an economy of form and an integration of spatial behaviour. For this reason, the layout created by the architect was taken into serious consideration from the beginning.

FEATURES:

Approximate weight 4 tons
Steel quality S275JR
Thickness 1"



Material: Carbon Steel S275JR quality

Measures: 6 X 4 X 3 meters 19.69' X 13.12' X 9.84'

Weight: Approximately 3 or 4 Tons

Foundation: Could be used the existing on project concrete slab.

Totally self-portant. (self-supporting)

Lighting: TBD

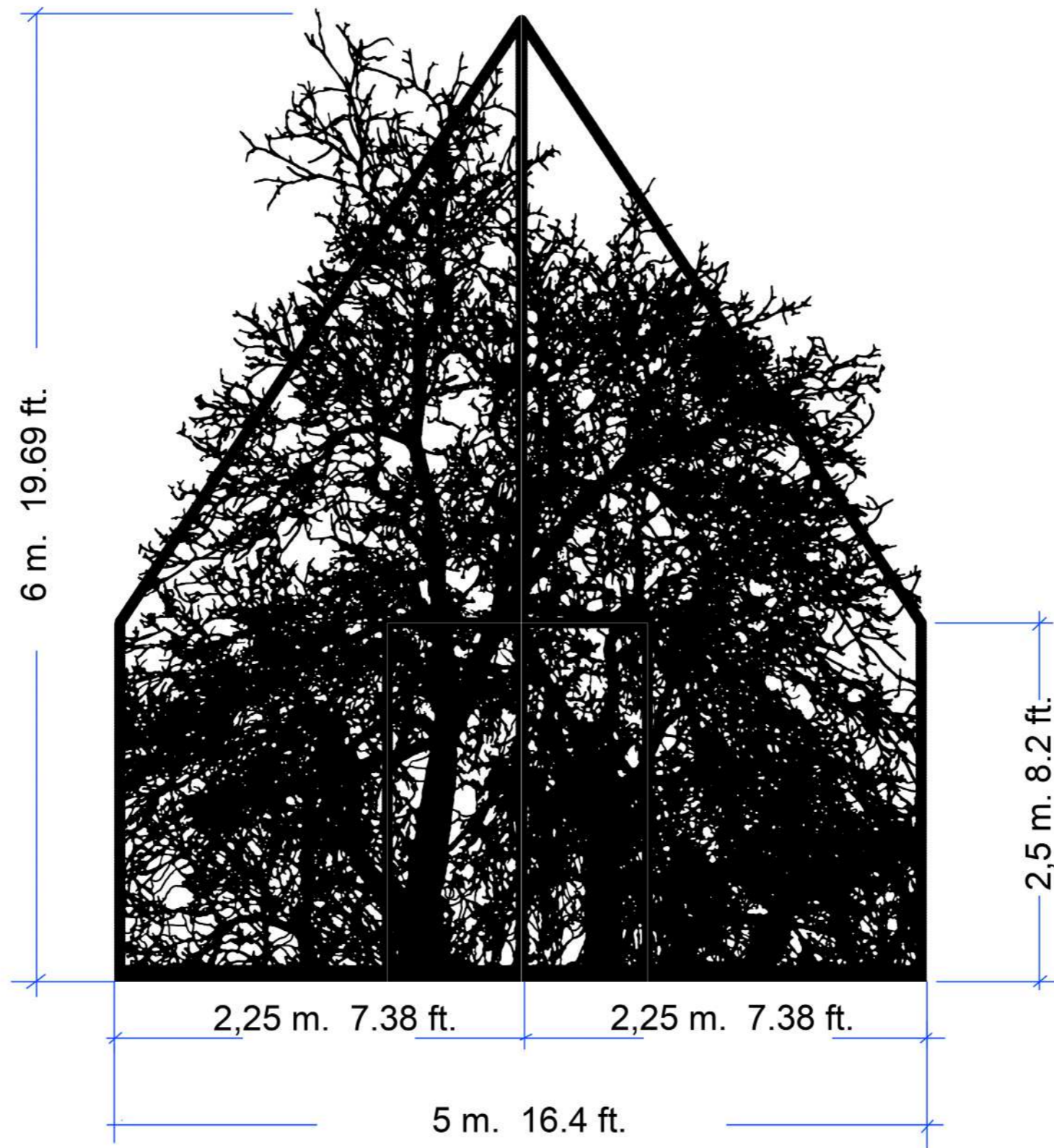


Plate Layout and Measures

concrete slab

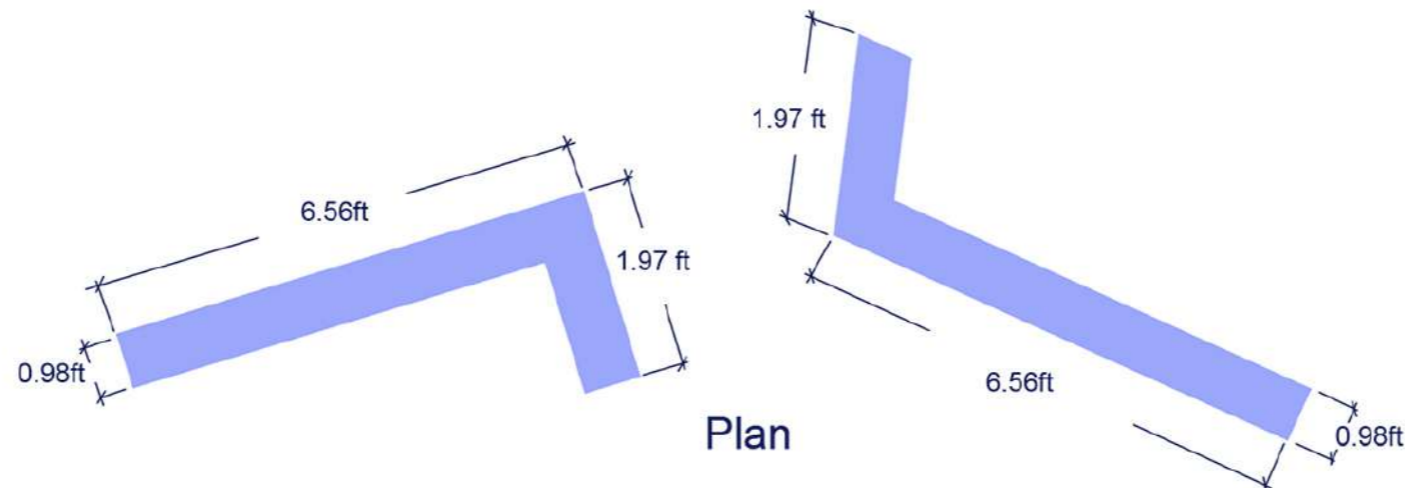
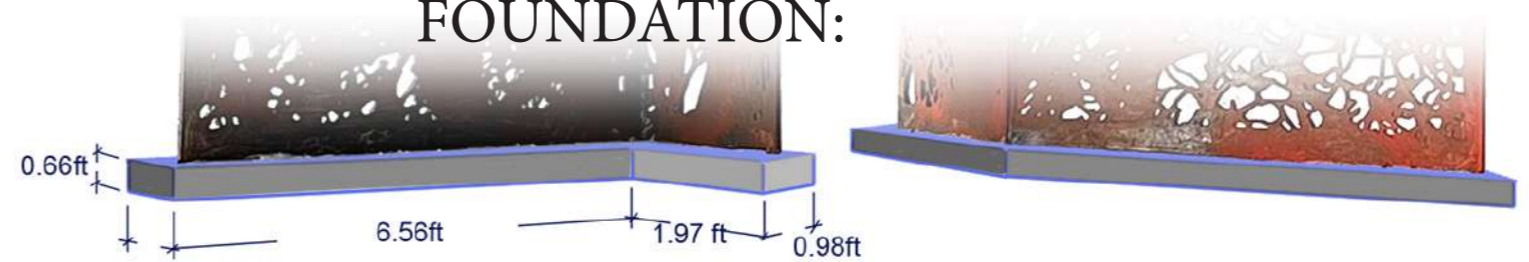
This sculpture is self-supporting with the massive weight load on its lower part. It is perfectly stable. It does not require a concrete footing other than the floor slab of the park itself. A bolted anchor to this ground will be sufficient.

However, a hidden reinforcement footing can be implemented on site, in the drawing detailing its size and shape.



perspective

FOUNDATION:



LIGHTING

This lighting issue should be discussed once the proposal has been approved, if it is. It is important to consider what kind of effect the team of architects and the other interested parties want to achieve. At first glance I see two options:

- 1- a flow of light from an existing street lamp.
- 2- several spotlights at ground level.

I am attaching a couple of examples of previous work.



From any street lamp shooting a stream of light



light points flush with the ground



Some examples using yellow light

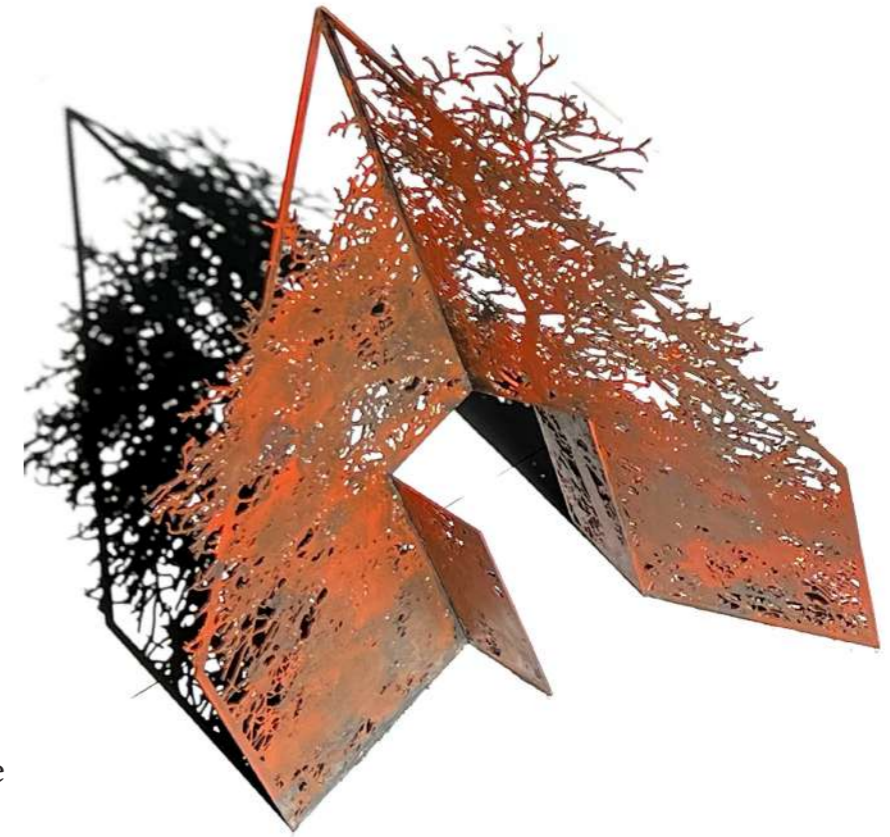
SAFETY:

I am aware of your requirement regarding safety, in this regard I must state that the style of my works has never been subject to danger due to cuts or climbing. The possibility of cuts is ruled out since all the axes are rounded, making the sculpture very touchable without any type of risk. Regarding the possibility of climbing, if this fear persists, the final project will be optimized so that the first meters from the base do not allow this possibility.

MAINTENANCE:

Carbon steel works do not require any type of lifelong maintenance. Likewise, upon delivery of the work, cleaning instructions will be provided in case of insect pests or graffiti vandalism. I must state that graffiti artists do not choose my sculptures due to the irregular surface of my works that makes it impossible to read their graffiti.

A maintenance guide will be provided at the end of work



TIMINGS:

The needed time I take use to be 8 months. Anyway TBD.

PAYMENTS SCHEDULE:

30% at the acceptance or agreement signature.

40% Once the sculpture is made and prior shipment.

30% Once installed and client ok acceptance.

This point could be discussed depending on the manufacturing strategy.

BUDGET

Preparations drawings Vectors for fabrication & machine special set-up.	1	1.500
Workshop shoppins	Total fabrication	86,300
Grinding and sanding	12400	12,400
Transportation	28000	28,000
Installation asamble	11000	11,000
Installation footing	NO NEED	
Insurance	3000	3,000
Enginer		2,800
Community events	FREE	0
Video of process	FREE	0
Contigences	10000	10,000
Artist's fee	45000	45,000
Estimated budget	US\$	200,000.00

CONTACT:

JUANJO NOVELLA - ARTIST

juanjonovella@gmail.com

juanjo@juanjonovella.com

+34 666 50 42 88

ESTIBALIZ PEQUENO AZPIRIZ

estibaliz@juanjonovella.com

+974 50 408 677

www.juanjonovella.com