

The logo of the City of Joliet, Illinois, is a circular emblem. It features a central figure of a Native American holding a bow and arrow, with a star above his head. The text "CITY OF JOLIET, ILLINOIS" is written around the top inner edge, and "CROSSROADS OF MID-AMERICA" is written around the bottom inner edge. There are also small icons of a ship, a train, and a lighthouse.

JOLIET

A large, colorful sign shaped like a Route 66 shield. It features a pink ice cream cone at the top, the text "JOLIET Kicks ON 66" in the center, and a small figure of a person on a horse on the left side.

Route 66 Park

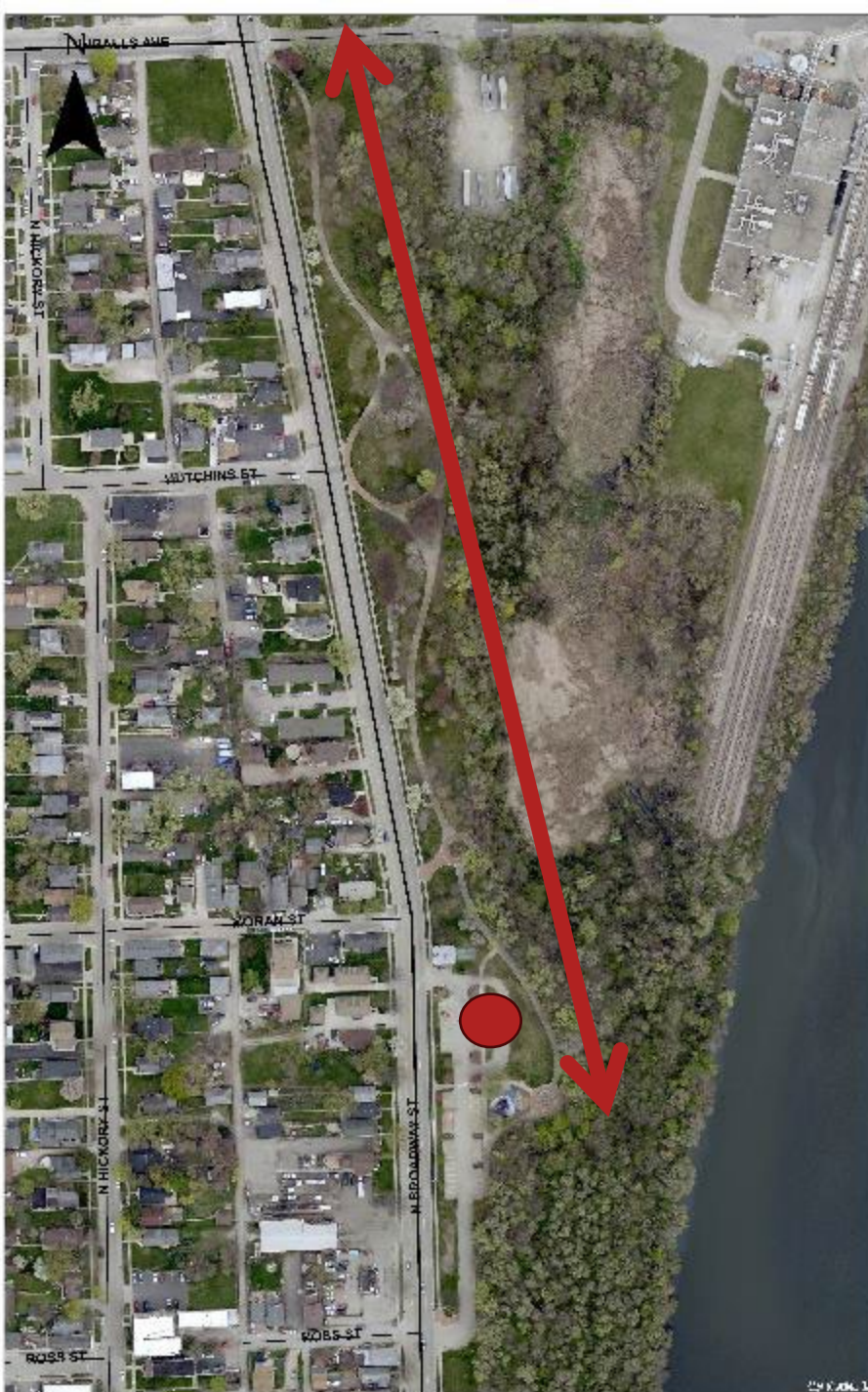
at the Broadway Street Greenway

Proposed Sidewalk Circulation and
Visitor Experience Improvements

Related Agenda Items

- Approving a Memorandum of Agreement between Heritage Corridor Convention and Visitors Bureau and the City of Joliet for Sidewalk Circulation and Visitor Experience Enhancements at Route 66 Park at Broadway Street Greenway
- Award of Professional Services Agreement for the Route 66 Park at Broadway Street Greenway Improvements, Survey and Design Phase, to Geotech Engineering Inc. in the Amount of \$32,500.
- Resolution to Reprogram Community Development Block Grant Funds, and Submit HUD Substantial Amendment to Program Year 2024 Annual Action Plan

Site History



- Broadway Street Greenway project initiated (1991)
 - Ruby to Theodore Street
 - 7 acre linear park
 - 1/3 mile walking path
 - Rich & Creamy (Kreamy Delight)
- Route 66 Park at the Broadway Street Greenway established (2007)
- Arboretum at the Broadway Street Greenway established (2010)
- Rededication of Route 66 Park (2024)

Route 66 Grant Program **Round Three** funds allowed the City to enhance this important gateway into Joliet.



New signs, interpretative panels and fun installations funded in Round Three of the Route 66 Grant Program



Route 66 Park

Route 66 Grant Program
Round Four funds will
allow the City to address
safety and ADA
accessibility issues

- *Lack of a separated
and ADA compliant
path from the
parking lot to the ice
cream stand*





A visitor currently must use the vehicular drive aisle to access the front sidewalk.





Current sidewalk network includes steps



There is no connection from the walking path to the ice cream stand, concrete pad and sidewalk around the ice cream stand.

Note the available physical space to rectify circulation issues



Current sidewalk network around the ice cream stand includes steps